

NOTES:

1. INFORMATION CONTAINED ON THIS DRAWING IS INTENDED TO PROVIDE AMPHENOL'S CUSTOMERS SPECIFICATIONS CRITICAL TO THE INSTALLATION AND USE OF THE ASSOCIATED PRODUCT. AMPHENOL RETAINS THE RIGHT TO REVISE THIS DOCUMENT WITHOUT NOTICE PROVIDING THAT THE CHANGE WILL NOT AFFECT FORM, FIT OR FUNCTION INTERCHANGEABILITY WITH PREVIOUSLY SUPPLIED PRODUCT. IN THE EVENT OF ANY CHANGE AFFECTING SAID INTERCHANGEABILITY CUSTOMERS WILL BE NOTIFIED PRIOR TO IMPLEMENTATION.

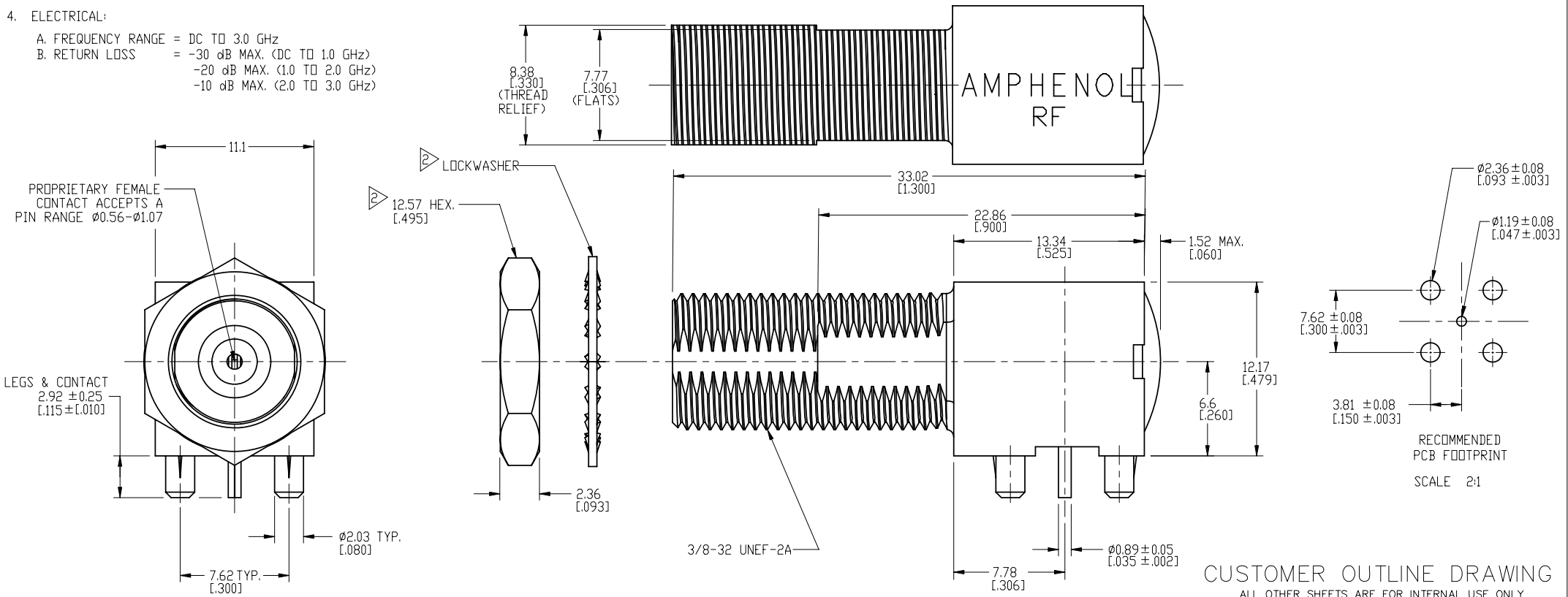
2. CONNECTORS, LOCKWASHER, AND NUT ARE BAGGED SEPARATELY (BULKPACKED 300).

3. MATERIALS & FINISHES:

- BODY - ZINC, TIN PLATED.
- CONTACT - BERYLLIUM COPPER, TIN PLATED.
- HEX NUT - BRASS, NICKEL PLATED.
- LOCKWASHER - BRASS, NICKEL PLATED.
- INSULATOR - TPX (METHYLPENTENE COPOLYMER)

4. ELECTRICAL:

- A. FREQUENCY RANGE = DC TO 3.0 GHz
- B. RETURN LOSS = -30 dB MAX. (DC TO 1.0 GHz)
-20 dB MAX. (1.0 TO 2.0 GHz)
-10 dB MAX. (2.0 TO 3.0 GHz)



THIRD ANGLE PROJ.

REVISIONS

REV	DESCRIPTION	DATE	ECD	APPR
A	RELEASE TO MFG.	19-May-99	42958	CPM
B	A) CONTACT WAS: PHOSPHOR BRONZE B) INSULATOR WAS: POLYPROPYLENE	3/13/03	44395	BCG
C	ADD ALTERANTE BOM REF	8/1/05	45645	CPM
D	.437 WAS SQ	09/21/06	45794	BRUCE
D1	2.92±0.25 WAS 2.92±0.02	26-Oct-06		BRUCE
E	BODY AND NUT-HEX WERE CHANGED	29-Jan-07		CISSY
E1	NUT-HEX WAS CHANGED	02-Feb-07		CISSY
F	BODY WAS CHANGED	13-08-07'		AW
G	NUT-HEX WAS CHANGED	18-Mar-08'		AW
H	SEE SHEET 1\RD-DM09091601K	18-Sep-09	47802	SH
J	TITLE BLOCK WAS CHANGED	18-Jan-10	47955	AC
K	LOCK WASHER WAS CHANGED/RD-DM1121501F	30-Dec-11	48832	SH
L	ADD INCH DIMENSION	17-Jul-12	49138	SH

CUSTOMER OUTLINE DRAWING
ALL OTHER SHEETS ARE FOR INTERNAL USE ONLY

UNLESS OTHERWISE SPECIFIED, DIMENSIONS ARE IN METRIC AND TOLERANCES ARE: <0.5mm ±0.05mm 0.5 - 6mm ±0.1mm 6 - 30mm ±0.2mm 30 - 120mm ±0.3mm ANGLES ±1°	MATERIAL	DRAWN T.DENG	DATE 19-Jun-12	TITLE F (FEMALE) PCB RT. ANGLE W/HARDWARE		Amphenol RF Danbury CT USA, Tainan Taiwan, Shenzhen China www.amphenolrf.com	
	REFERENCE	ENGINEER S.LI	DATE 19-Jun-12			DRAWING NO. 531-40047-3	
NOTICE - These drawings, specifications, or other data (1) are, and remain the property of Amphenol Corp. (2) must be returned upon request; and (3) are confidential and not to be disclosed to any person other than those to whom they are given by Amphenol Corp. The furnishing of these drawings, specifications, or other data by Amphenol Corp., or to any other person to anyone for any purpose is not to be regarded by implication or otherwise in any manner licensing, granting rights or permitting such holder or any other person to manufacture, use or sell any product, process or design, patented or otherwise, that may in any way be related to or disclosed by said drawings, specifications, or other data.	FINISH	APPROVED S.HSIEH	DATE 19-Jun-12	SCALE: 4/1	SHEET 2 OF 2	ITEM NO. 531-40047-3	PART NO. 531-40047-3
		CAD FILE F:\DWG\CNPD\531\40047\3-KSZ	DWG SIZE B	CODE ID 74868	REV L		