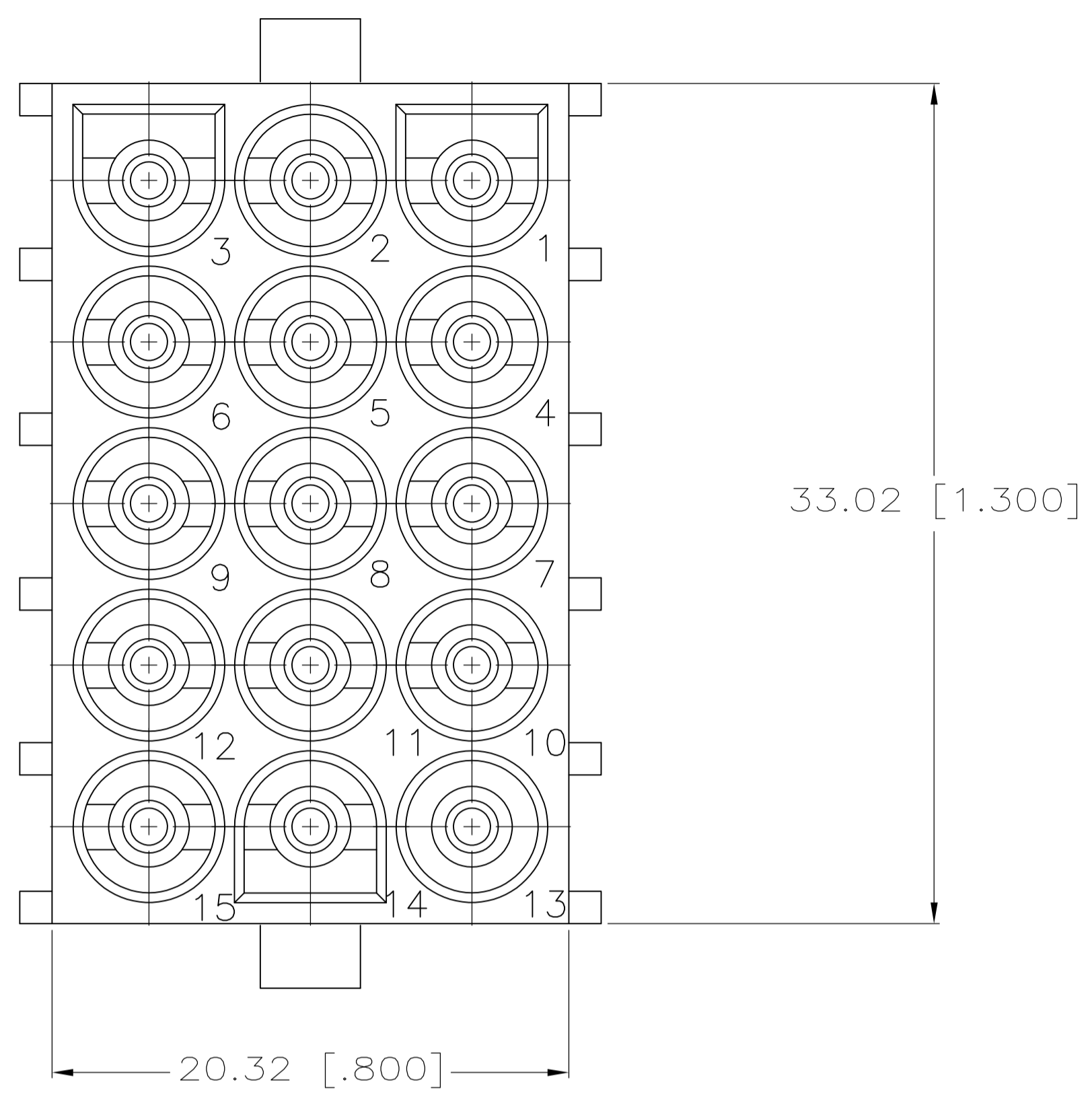
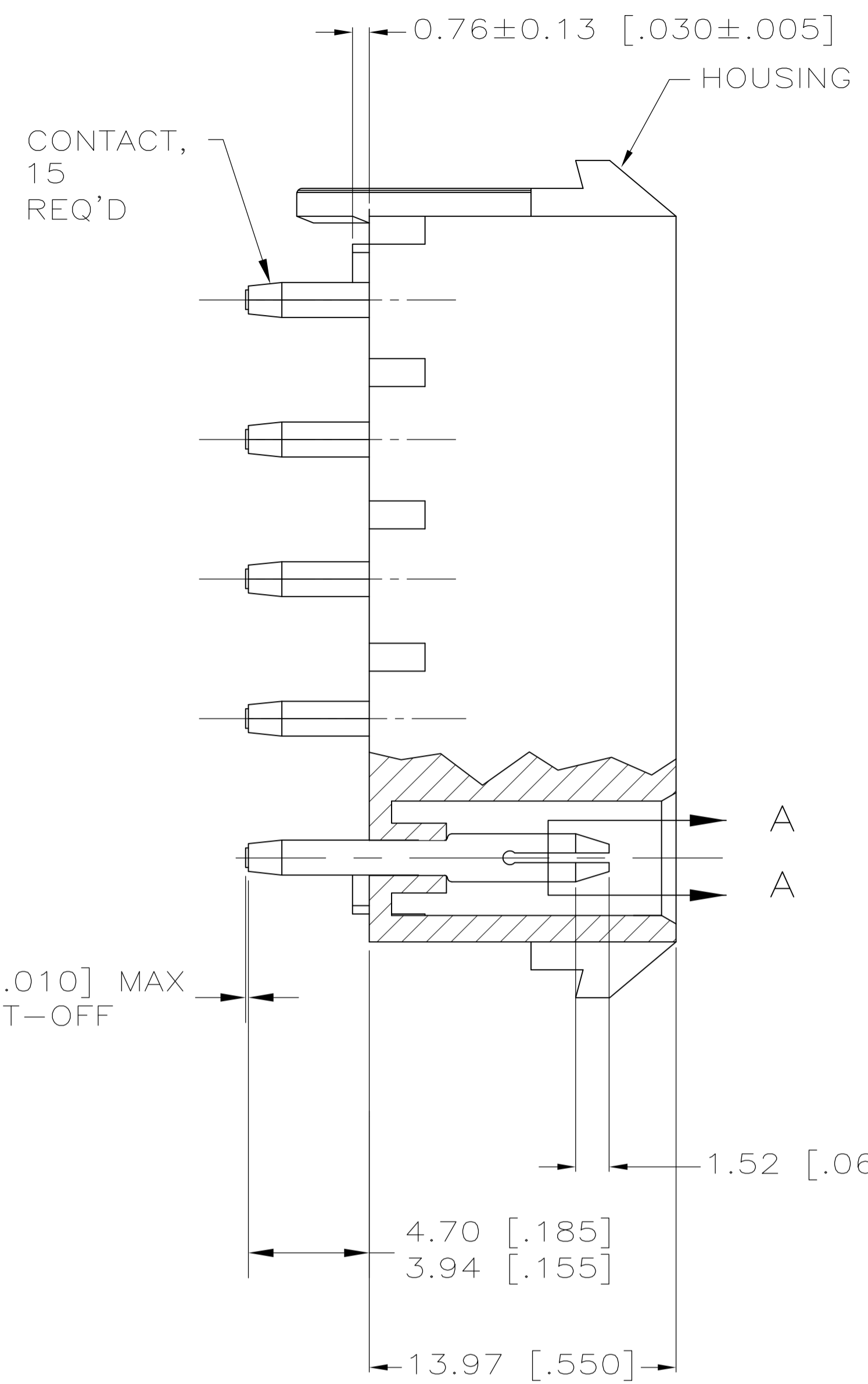
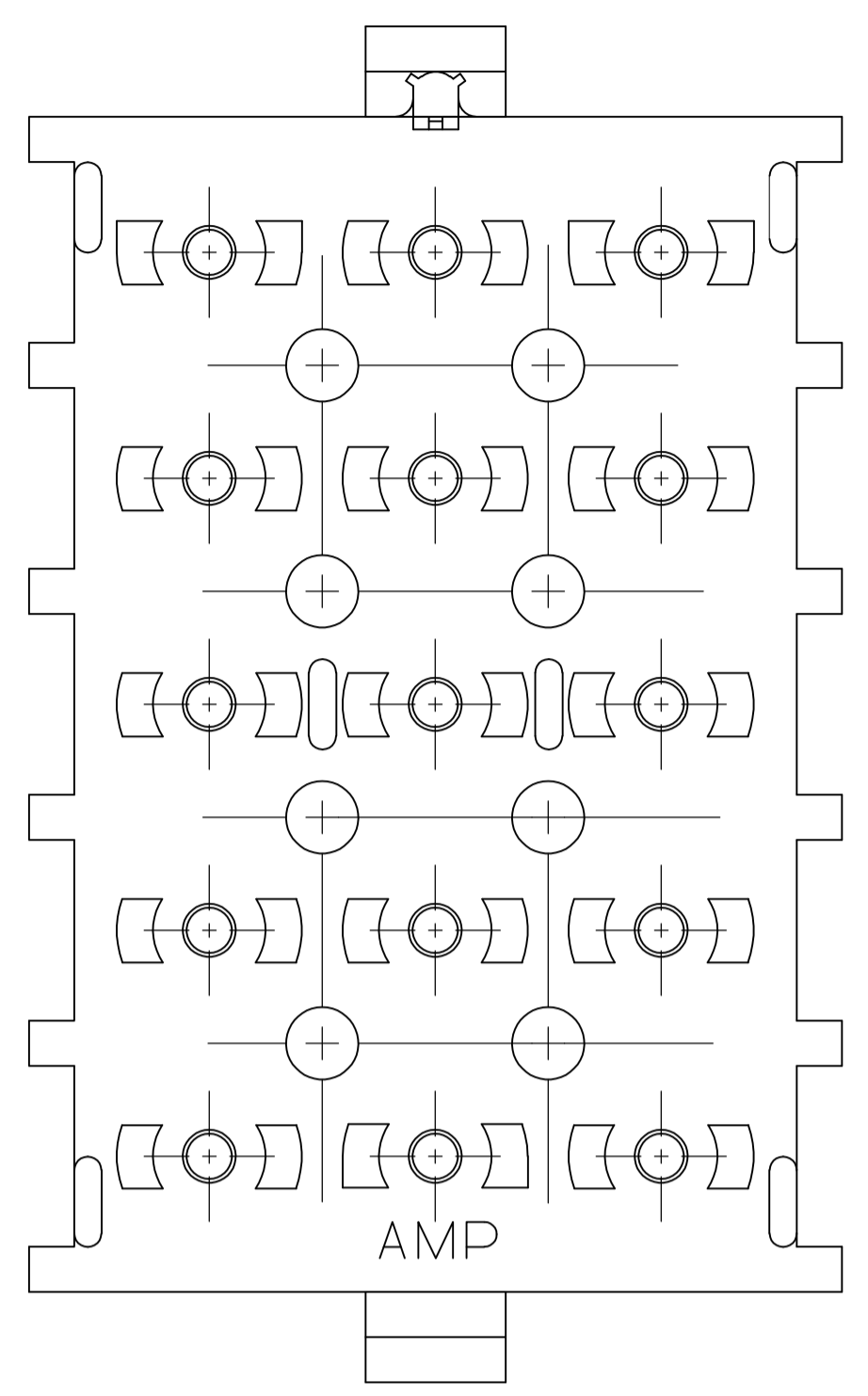
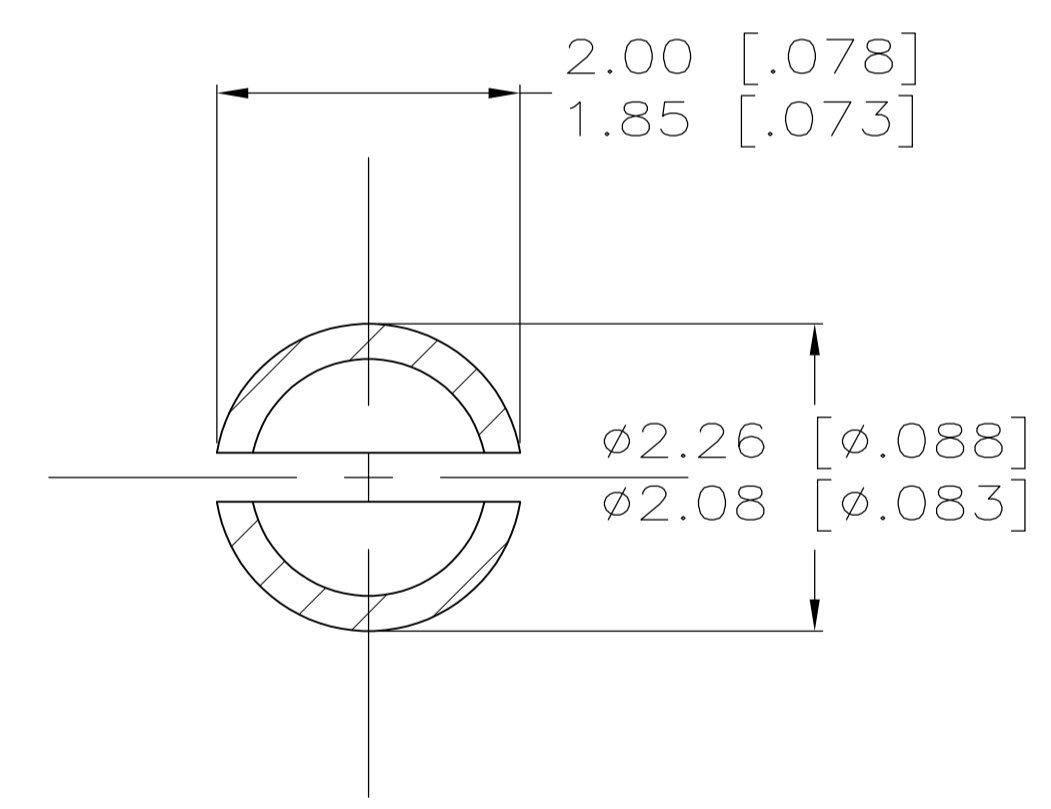


LOC		DIST		REVISIONS			
CM	00	REV	DATE	BY	CHK	APPV	
K2	REVISED PER ECR-12-011660	31JAN13	KH	TM			

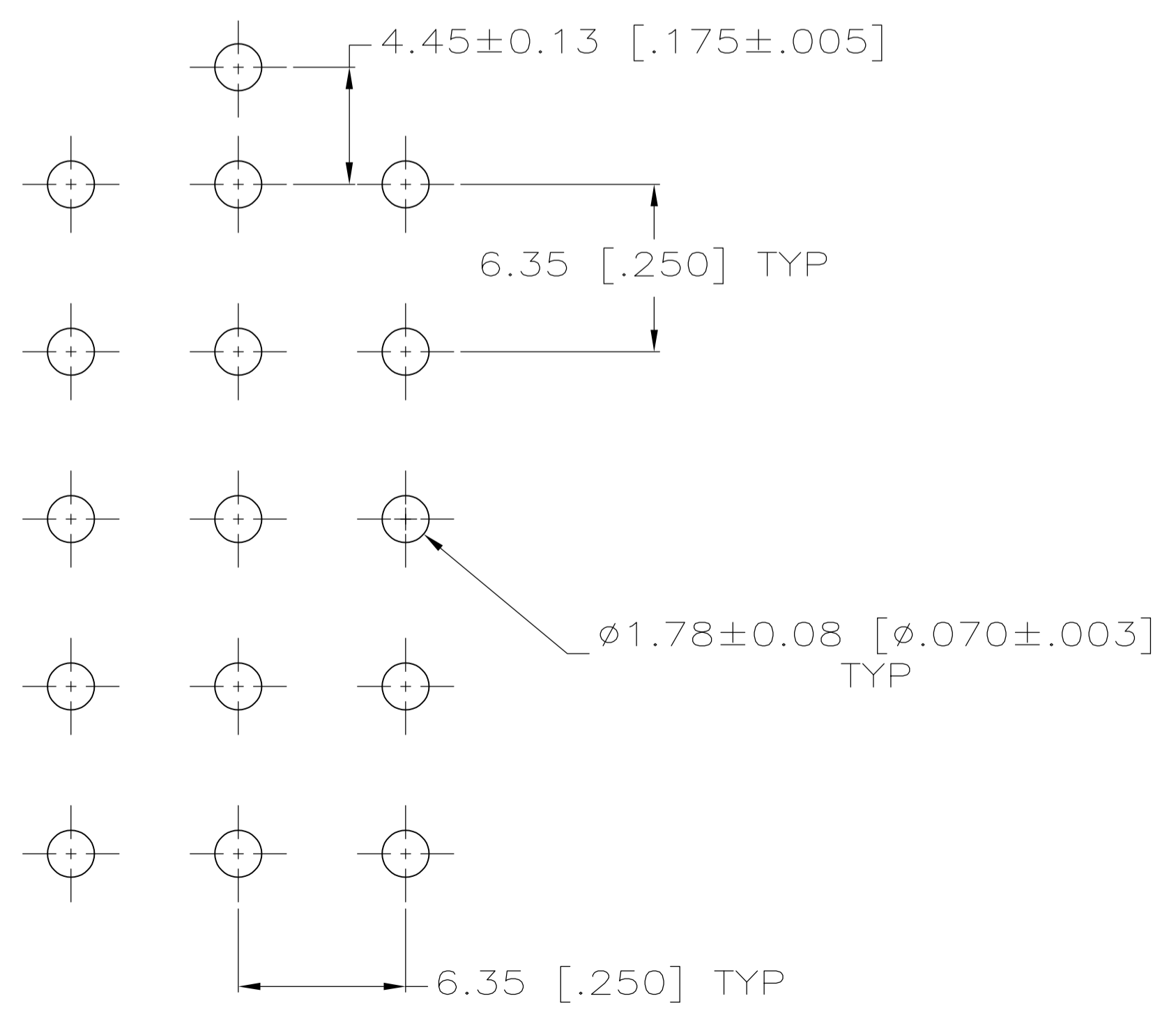


- 1 PARTS MUST COMPLY WITH AMP SOLDERABILITY SPEC 109-11-3.
- 2 MATES WITH HOUSING NO. 350736 USING SOCKET CONTACTS.
- 3 CONTACT IS STAMPED FROM PRE-PLATED STOCK WHICH IS PLATED OVERALL WITH 0.00127 [.000050] NICKEL, THEN STRIPED WITH 0.00076 [.000030] GOLD IN CONTACT AREA INDICATED AND TIN-LEAD ON SOLDER TAIL END.
- 4 CONTACT IS PLATED OVERALL WITH 0.00127 [.000050] NICKEL, THEN 0.00076 [.000030] GOLD OVER CONTACT LENGTH INDICATED AND MATTE TIN ON SOLDER TAIL END.
- 6 SUPERSEDED BY 641976-4

0.25 [.010] MAX CUT-OFF



SECTION A-A
SCALE 12:1



RECOMMENDED LAYOUT FOR 1.58 [.062] THICK PC BOARD

PH BRZ GOLD ⁴	NYLON, UL94V-0	641976-4
PH BRZ GOLD ³	NYLON, UL94V-0	641976-2
PH BRZ TIN	NYLON, UL94V-0	641976-1
CONTACT	HOUSING	PART NO

THIS DRAWING IS A CONTROLLED DOCUMENT.		DWG NO. 140CT2005	TE Connectivity
DIMENSIONS: mm [INCHES]		APPROVED: S. RIDGILL 19-NOV-2003	
TOLERANCES UNLESS OTHERWISE SPECIFIED:		NAME: S. RIDGILL 19-NOV-2003	APPLICATION SPEC
0. PLC ±	1. PLC ±	SIZE: A1	CAGE CODE: 00779
2. PLC ±	3. PLC ± 0.13 [.005]	SCALE: 5:1	DRAWING NO: 641976
4. PLC ±	ANGLES ±	SHEET: 1 of 1	REV: K2
MATERIAL: SEE CHART	FINISH:	CUSTOMER DRAWING	