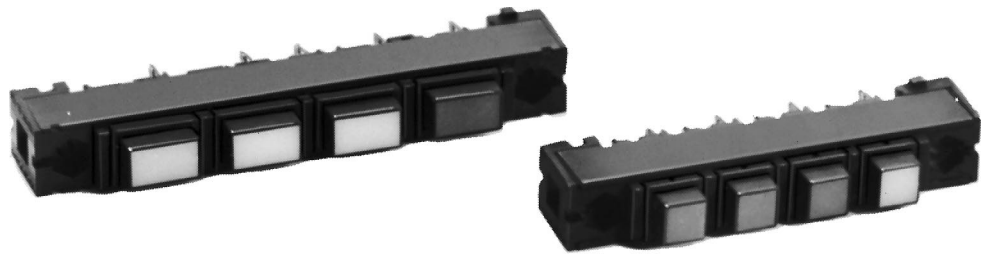


Manual Switches

Strip Mounting Frames

MML61 Series



MML61 ORDER GUIDE

MML61K

Orientation/Color
For Rectangular* Housings:
MML61K Horizontal strip, black
MML61G Vertical strip, black
For Square Housings
MML61J Black

* * .4" x .6" housings only.

5

No. of Stations
1 One
2 Two
3 Three
4 Four
5 Five
6 Six
7 Seven
8 Eight
9 Nine
10 Ten

Note: Switches and indicators are ordered as separate items.

- FEATURES**
- Provides back of panel or printed wiring board mounting in a multi-unit strip of switches/indicators.
 - Devices can be pre-wired prior to installation.
 - Holes at each end of frame will accept No. 4 screws.
 - Can be used for pushbutton or rocker type switches.

Example: MML61K5
Black 5-station strip mounting frame, horizontal orientation.

Manuals