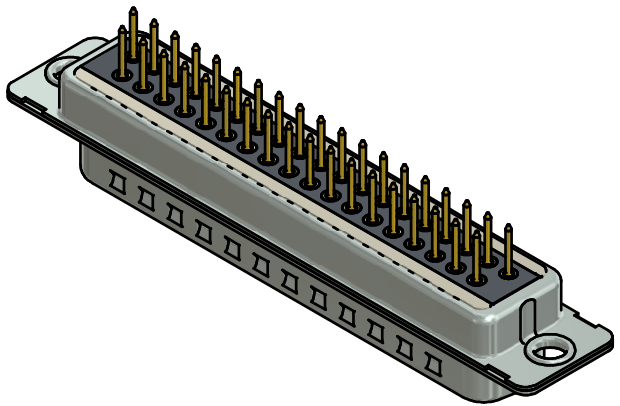
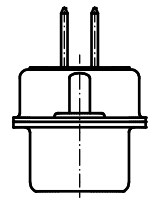
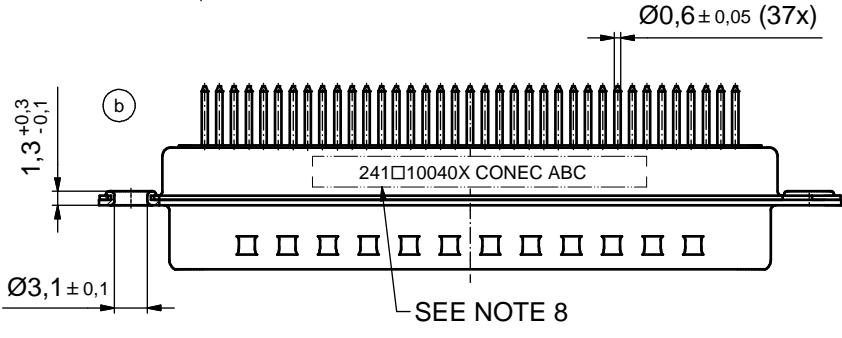
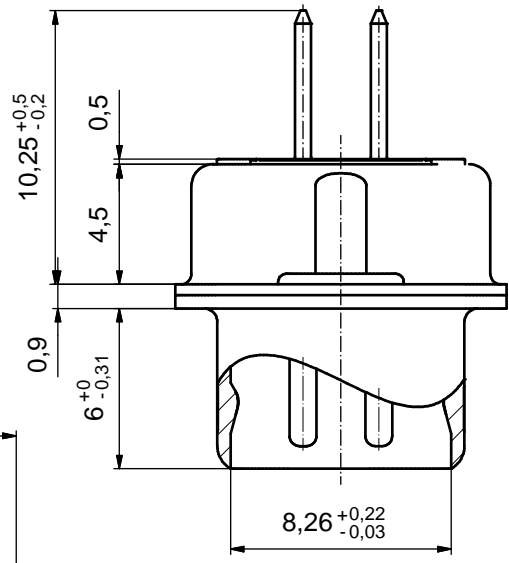
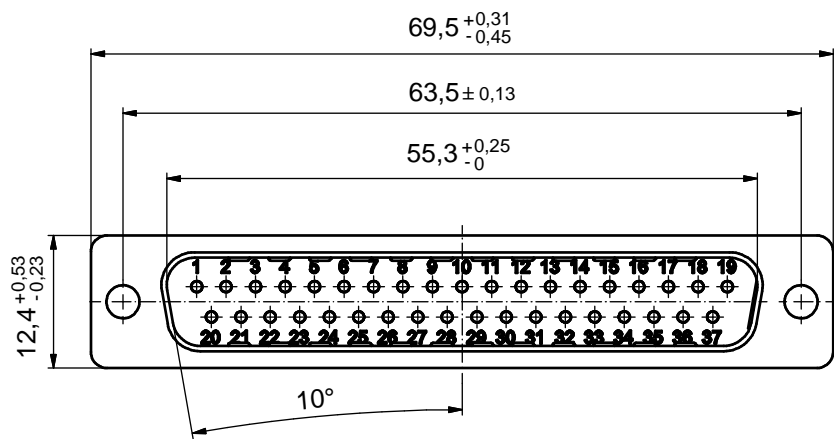


6 5 4 3 2 1

(5:1)



NOTES: (b)

1. FOR WAVESOLDERING (SOLDER BATH TEMPERATURE 260°C FOR 5 SEC. AND SOLDER PREHEAT 100°C FOR 30 SEC.)
2. METALSHELLS: STEEL; min. 315µm TIN over 40-80µm NICKEL
3. INSULATOR: HIGH TEMPERATURE PLASTIC UL 94 V-0; BLACK
4. CONTACTS: COPPER ALLOY; PLATING (SEE PART NO.):
  - PLEASE ADD C for 30µm HARD GOLD over min. 50µm NICKEL
  - PLEASE ADD B for 20µm HARD GOLD over min. 50µm NICKEL
  - PLEASE ADD A for GOLD FLASH over NICKEL ( PREFERRED TYPE )
 CONTACT TAILS PRETINNED
5. CAPACITANCE: 370pF ± 20%
6. DIELECTRIC WITHSTANDING VOLTAGE: 424 VDC
7. P.C.B. HOLE DRILLINGS ON SHEET 2
8. CONNECTOR IS PART MARKED: 241□10040X CONEC ABC (see note 4)

Directive 2002/95/EC RoHS compliant

THIS DRAWING MAY NOT BE COPIED OR REPRODUCED IN ANY WAY, AND MAY NOT BE PASSED ON TO A THIRD PARTY WITHOUT WRITTEN PERMISSION. OWNERSHIP AND COPYRIGHT OF CONEC GmbH DO NOT ALTER CAD DRAWING BY HAND				tolerance		scale: 2:1 (5:1)	
				date	name	material: SEE NOTES	
				drawn 07.05.2014	Heinrich	title: D-SUB C-FILTER MALE 37pos. SOLDER PIN STRAIGHT	
				appd. 07.05.2014	Henneboel		
				norm			
			d-old	24K1A279/24K2A279	dwg no:		
			4 x b	A5200	07.05.2014	Heinrich	DIN-A3
			a	Original			sh: 1/2
			rev.	description	date	name	part no: (b) 241□10040X (see note 4)

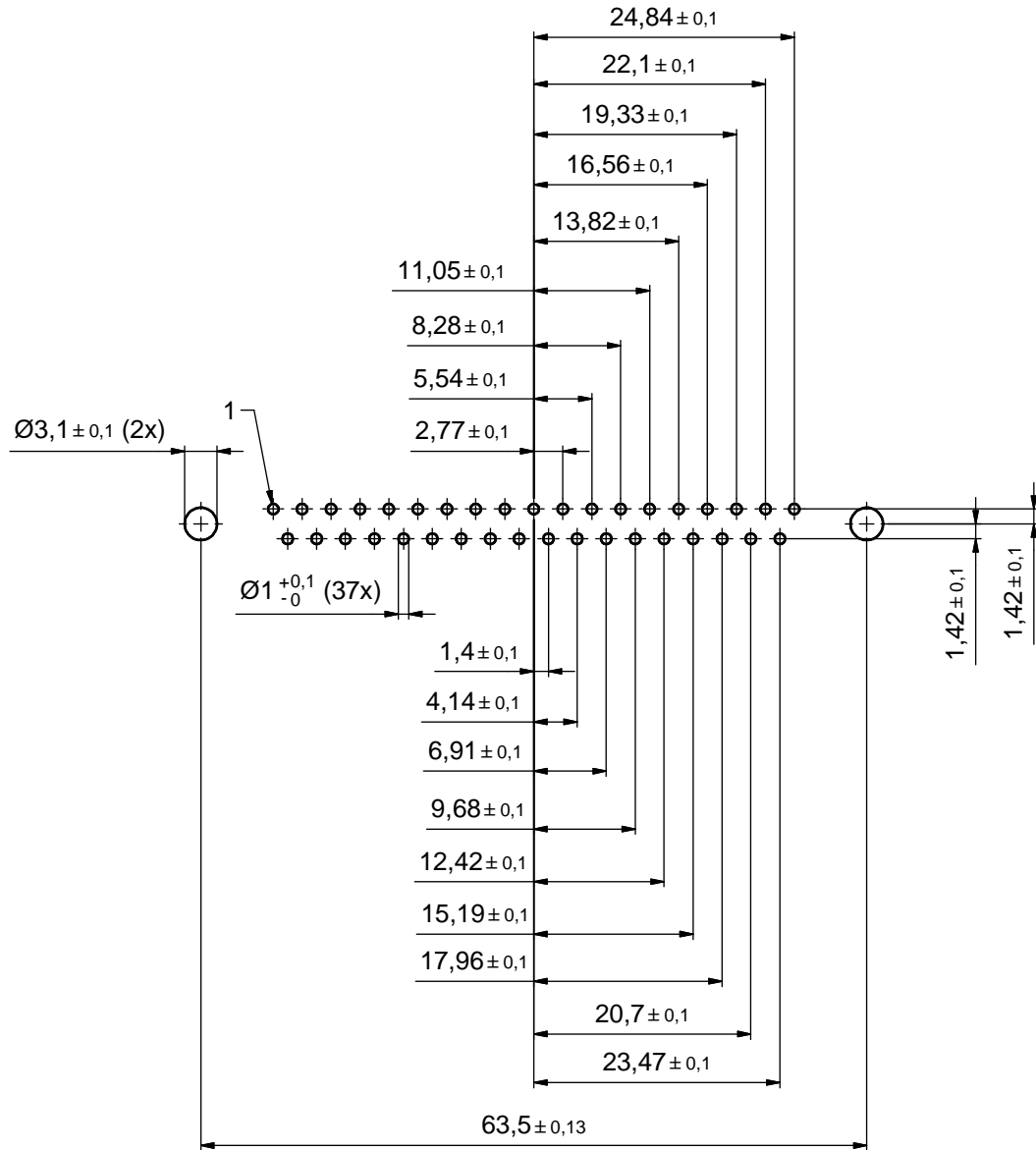


(b) 24K1A1526

6 5 4 3 2 1

# P.C.B. HOLE DRILLINGS

(P.C.B. TOP SIDE)



THIS DRAWING MAY NOT BE COPIED OR REPRODUCED IN ANY WAY, AND MAY NOT BE PASSED ON TO A THIRD PARTY WITHOUT WRITTEN PERMISSION. OWNERSHIP AND COPYRIGHT OF CONEC GmbH DO NOT ALTER CAD DRAWING BY HAND				tolerance		scale: 2:1
				date	name	material: SEE SHEET 2
				drawn 07.05.2014	Heinrich	title: P.C.B. HOLE DRILLINGS D-SUB C-FILTER MALE 37pos. SOLDER PIN
				appd. 07.05.2014	Henneboel	
				norm		dwg no: 24K1A1526
				d-old		
				rev. a	Original	DIN-A3 sh: 2/2
			rev. description	date	name	part no: SEE SHEET 1

