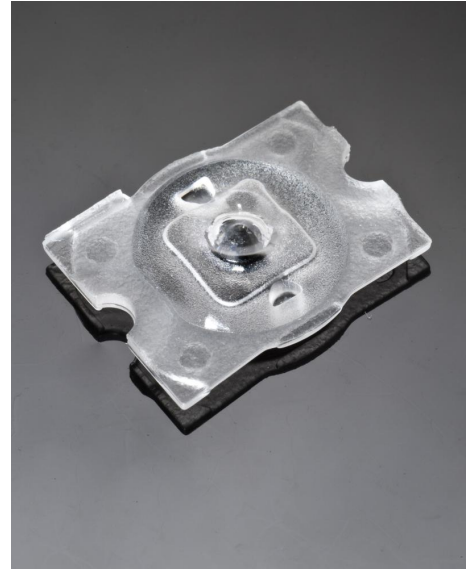


## DETAILS

<b>Product Number</b>	CA11519_LOTTA-A
<b>Family</b>	Lotta
<b>Type</b>	Assembly
<b>Color</b>	clear
<b>Diameter</b>	19,6+15,4 mm
<b>Height</b>	3,8 mm
<b>Style</b>	rectang
<b>Optic Material</b>	PMMA
<b>Holder Material</b>	
<b>Fastening</b>	screw, tape
<b>Status</b>	production ready
<b>ROHS Compliant</b>	Yes
<b>Date Updated</b>	26/06/2013

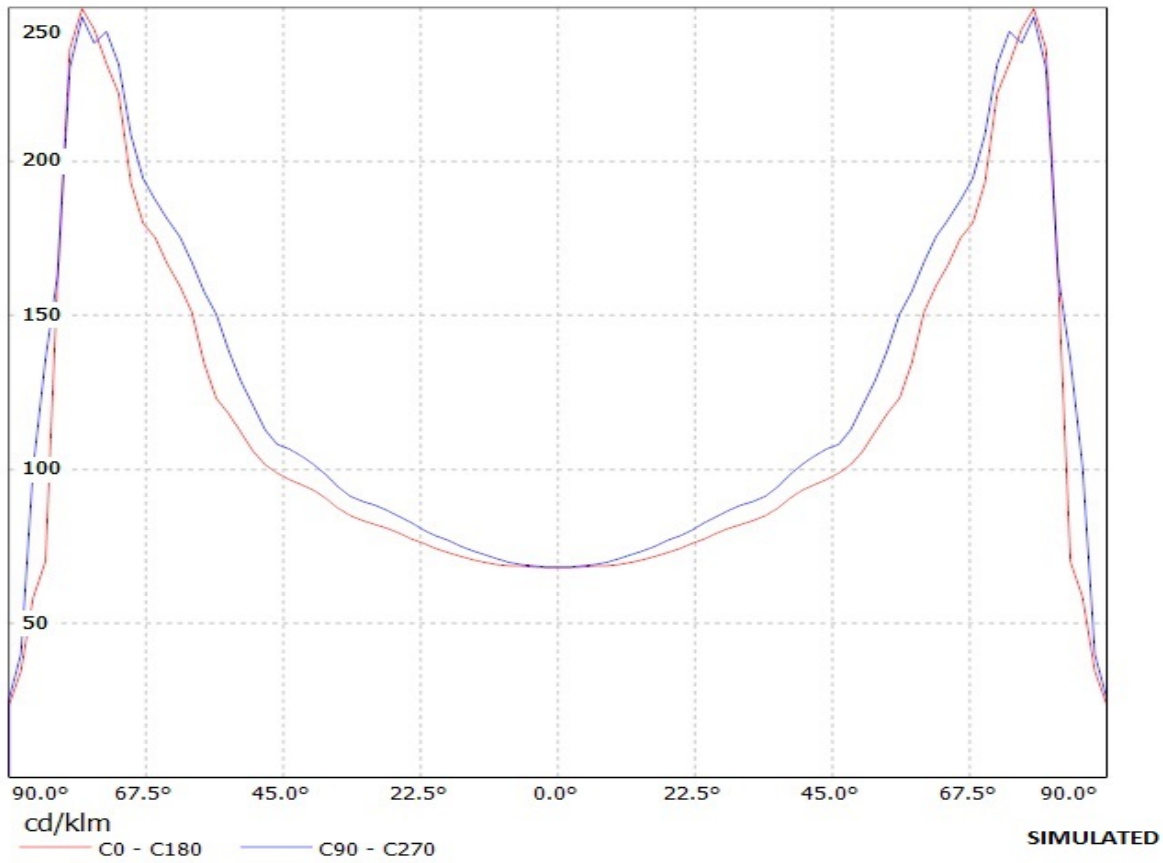


## OPTICAL PROPERTIES

LED	Viewing Angle	Light Beam	Efficiency	cd/lm	Connector
LUXEON Rebel	168 deg	Wide-Area...	81 %	-	-
LUXEON Rebel ES	175 deg	Wide-Area...	82 %	-	-
LUXEON A	175 deg	Wide-Area...	-	-	-

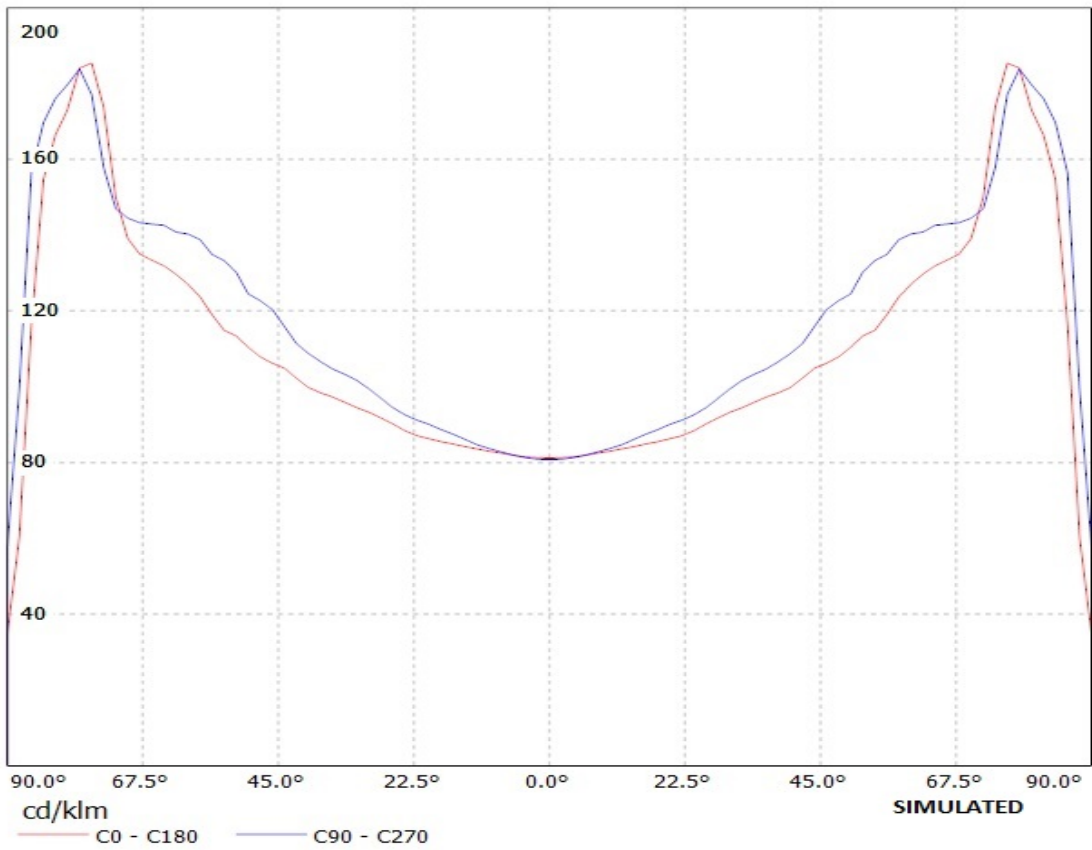
# Ledil Oy CA11519\_Lotta-A-RE-tape CA11519\_Lotta-A-RE-tape / LDC (Linear)

Luminaire: Ledil Oy CA11519\_Lotta-A-RE-tape CA11519\_Lotta-A-RE-tape  
Lamps: 1 x Luxeon Rebel (white)



# Ledil Oy CA11519\_Lotta-A-RE-es-tape CA11519\_Lotta-A-RE-es-tape / LDC (Linear)

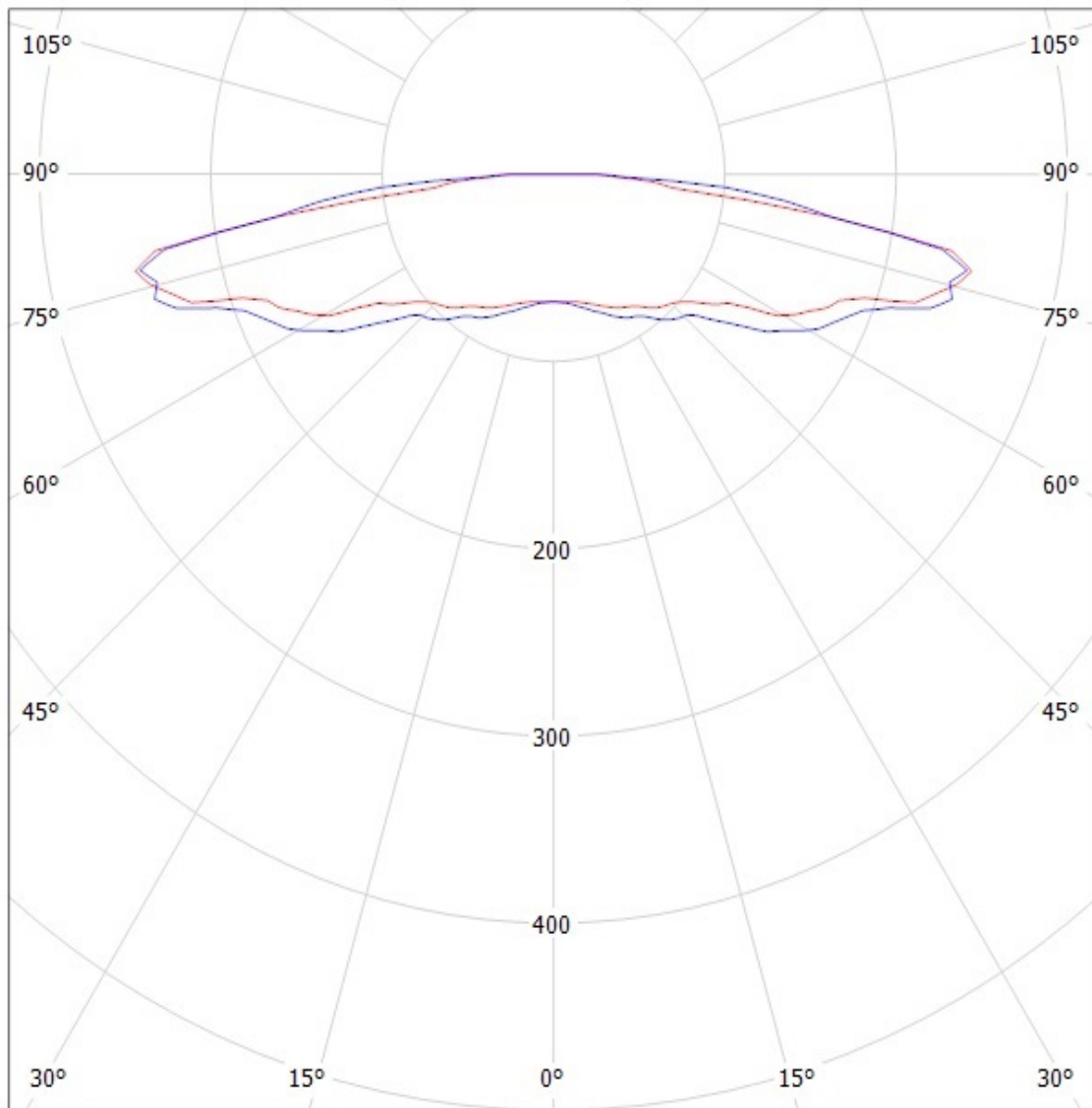
Luminaire: Ledil Oy CA11519\_Lotta-A-RE-es-tape CA11519\_Lotta-A-RE-es-tape  
Lamps: 1 x Luxeon Rebel ES white



# Ledil Oy CA11519\_Lotta-A-RE-tape CA11519\_Lotta-A-RE-tape / LDC (Polar)

Luminaire: Ledil Oy CA11519\_Lotta-A-RE-tape CA11519\_Lotta-A-RE-tape

Lamps: 1 x Luxeon Rebel (white)



cd/klm

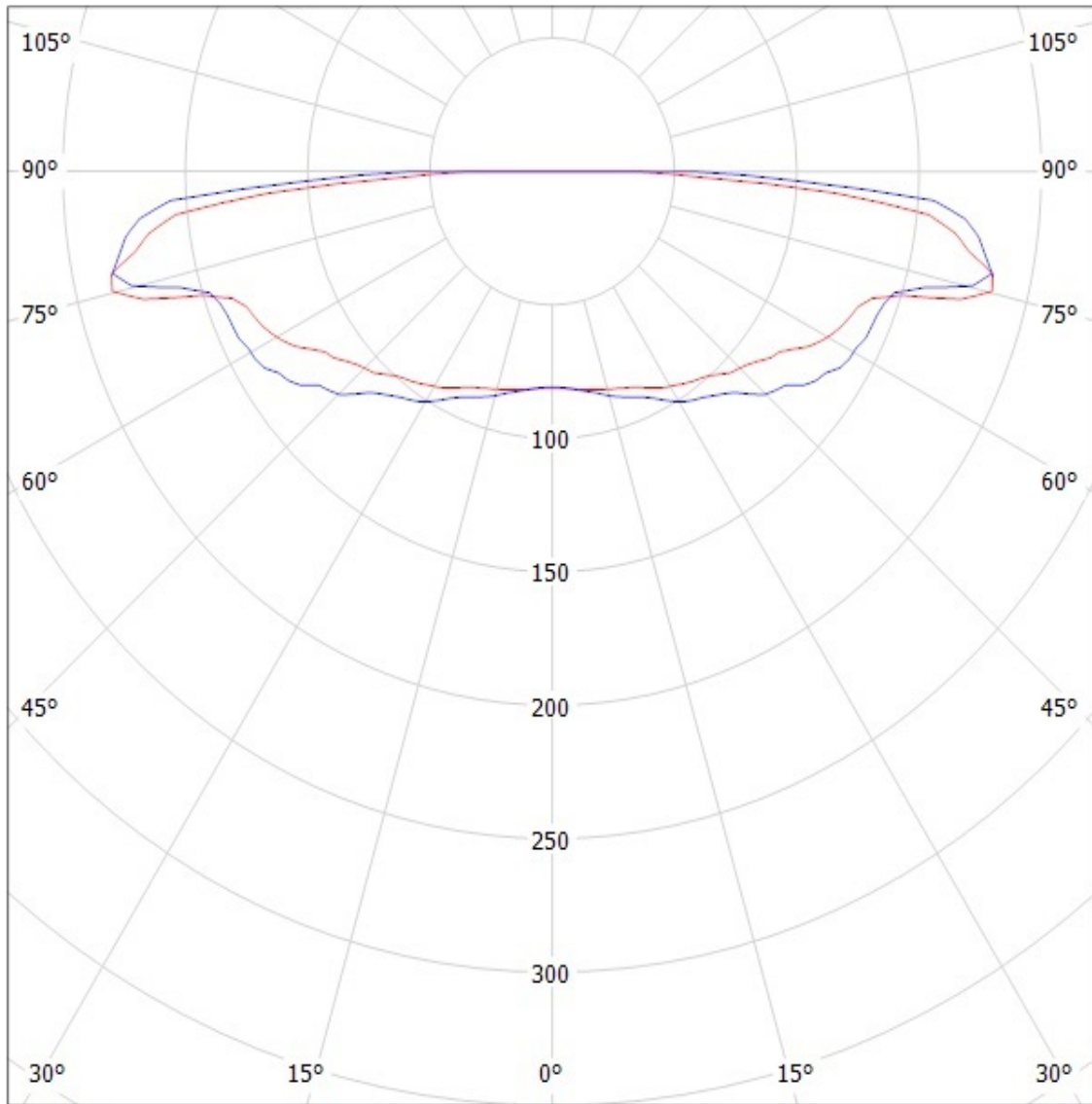
— C0 - C180

— C90 - C270

**SIMULATED**

# Ledil Oy CA11519\_Lotta-A-RE-es-tape CA11519\_Lotta-A-RE-es-tape / LDC (Polar)

Luminaire: Ledil Oy CA11519\_Lotta-A-RE-es-tape CA11519\_Lotta-A-RE-es-tape  
Lamps: 1 x Luxeon Rebel ES white



cd/klm

— C0 - C180 — C90 - C270

SIMULATED

**NOTE: The typical divergence will be changed by different color, chip size and chip position tolerance. The typical total divergence is the full angle measured where the luminous intensity is half of the peak value.**