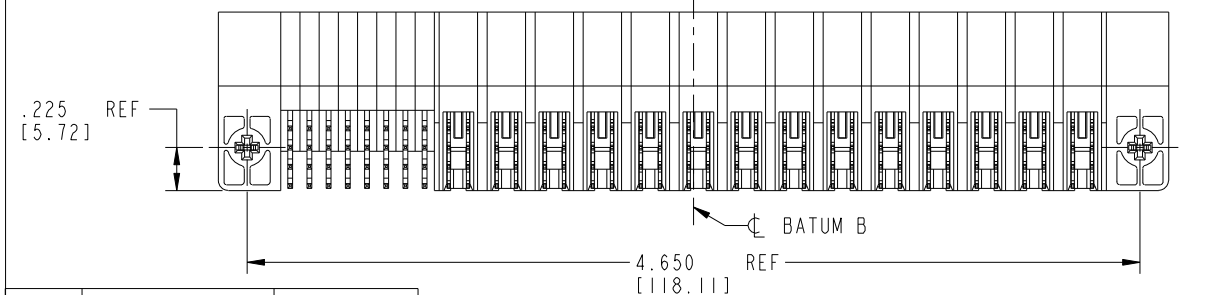
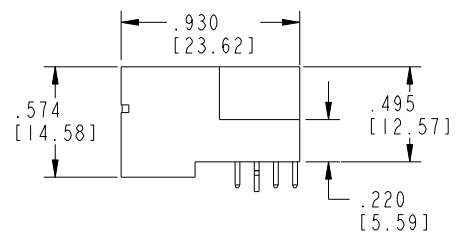
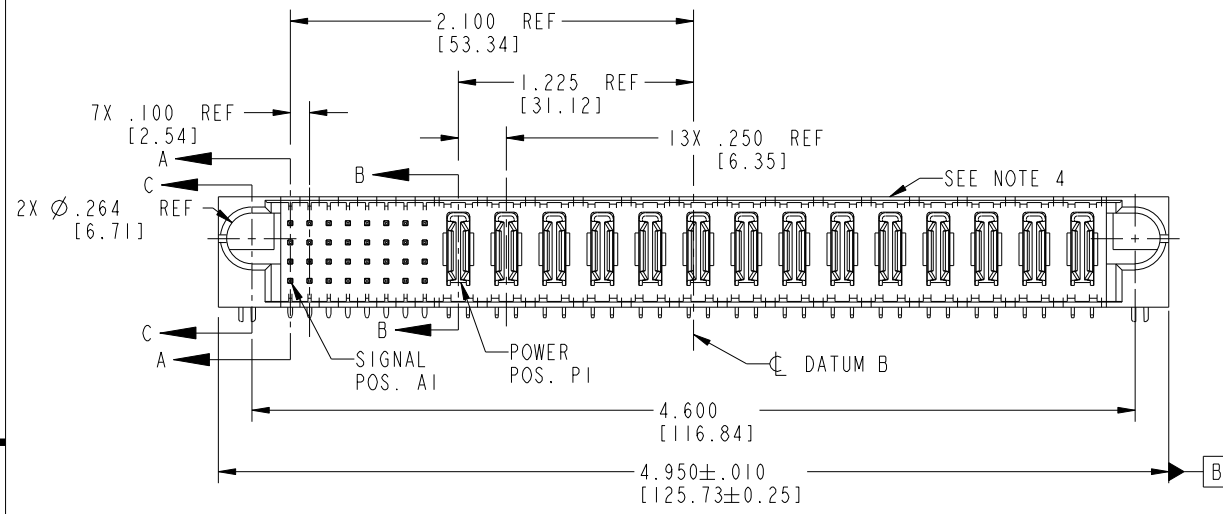
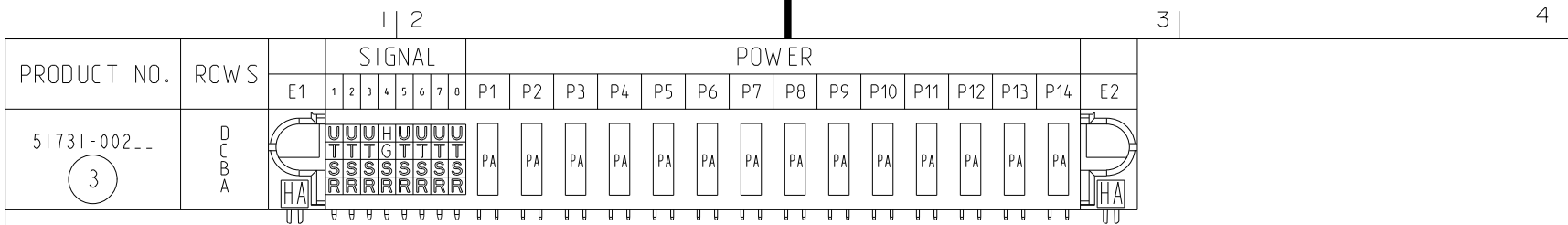


Tous droits strictement réservés. Reproduction ou communication a des tiers interdite sous quelque forme que ce soit sans autorisation écrite du propriétaire. Propriété de c FCI. Droits de reproduction FCI.

All rights strictly reserved. Reproduction or issue to third parties in any form whatever is not permitted without written authority from the proprietor. Property of FCI. Copyright FCI.



CODE	DIM "M" MATING LENGTH	CONTACT TYPE
G	.220 [5.59]	SIGNAL
H	.220 [5.59]	SIGNAL
R	.270 [6.86]	SIGNAL
S	.270 [6.86]	SIGNAL
T	.270 [6.86]	SIGNAL
U	.270 [6.86]	SIGNAL
PA	N/A [N/A]	POWER
HA	N/A [N/A]	HOLD-DOWN

mat'l code				SEE NOTE 2		tolerances unless otherwise specified		CUSTOMER	
ltr	ecn no.	dr	date	linear	angles	projection		COPY	
A	V02550	JWS	11-02-00	.XX±.01/0.X±0.3		projection		title 32S + 14P	
B	V20495	JWS	03-26-02	.XXX±.005/0.XX±0.13		projection		RIGHT ANGLE SOLDER HEADER	
C	V04-0915	TAB	09/15/04	.XXX±.0020/0.XXX±0.051	0°±2°	INCH/MM		product family PwrBlade code 213	
D	V04-1133	TAB	12/01/04			scale 1:1		size dwg no A 51731-002 sheet 1 of 4	
E	DG05-0455	CS	11/12/05						
F	DG06-0367	JMG	09/07/06						
sheet index		revision sheet		F 1	F 2	F 3	F 4		

FCI www.fciconnect.com

product family PwrBlade code 213

size dwg no A 51731-002 sheet 1 of 4

Pro/E

PDM: Rev:F

STAT: Released

Printed: Dec 20, 2010

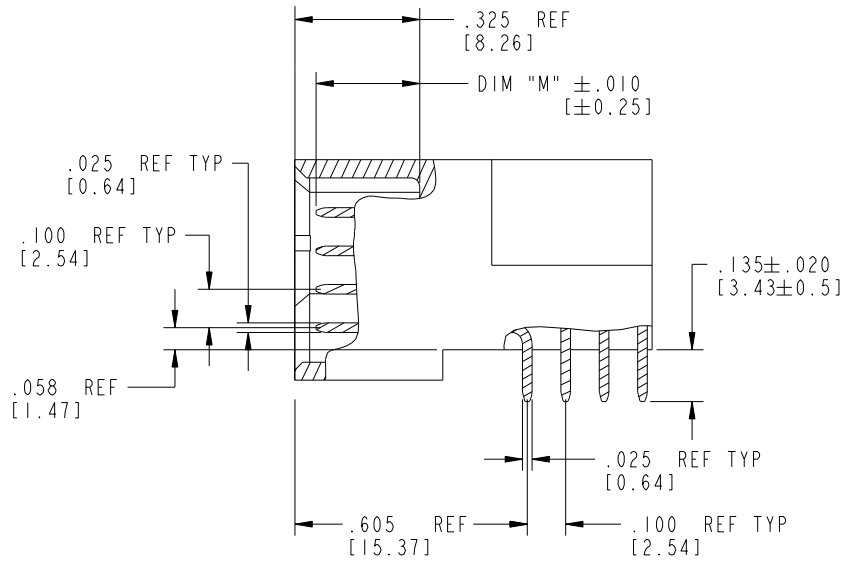
Tous droits strictement réservés. Reproduction ou communication a des tiers interdite sous quelque forme que ce soit sans autorisation écrite du propriétaire. Propriété de c FCI. Droits de reproduction FCI.

All rights strictly reserved. Reproduction or issue to third parties in any form whatever is not permitted without written authority from the proprietor. Property of FCI. Copyright FCI.

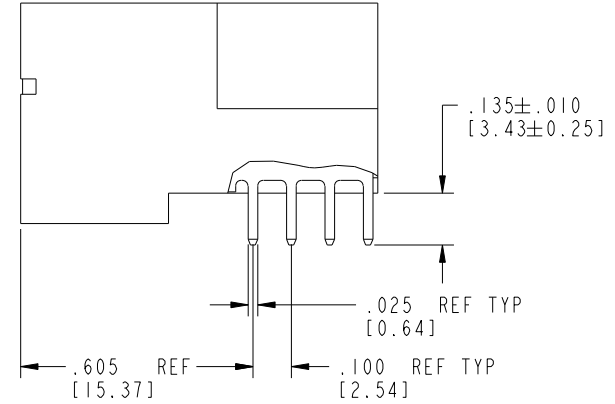


PRODUCT NUMBER

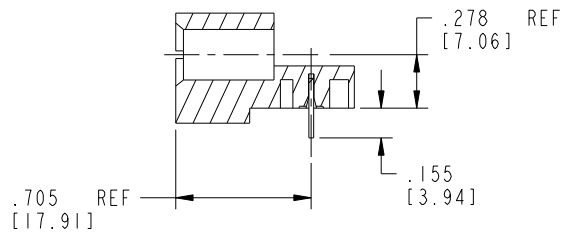
51731-002_ (3)



BROKEN-OUT SECTION A-A
SCALE 2:1



BROKEN-OUT SECTION B-B
SCALE 2:1



SECTION C-C

mat'l code		SEE NOTE 2		tolerances unless otherwise specified		CUSTOMER		FCI	
lbr	ecn no.	dr	date	linear	.XX±.01/0.X±0.3	COPY		www.fciconnect.com	
F				projection	.XXY±.005/0.XX±0.13			title 32S + 14P RIGHT ANGLE SOLDER HEADER	
				angles	.XXX±.0020/0.XXX±0.051			product family PwrBlade code 213	
				dr	J. SHAFFER 03-26-02	INCH/MM		size dwg no	
				enrg	M. MOSTOLLER 03-26-02	scale		A 51731-002	
				chr	M. MOSTOLLER 03-26-02	1:1		sheet 2 of 4	
				appd	M. MOSTOLLER 03-26-02				
sheet index	revision sheet								

Pro/E

PDM: Rev:F

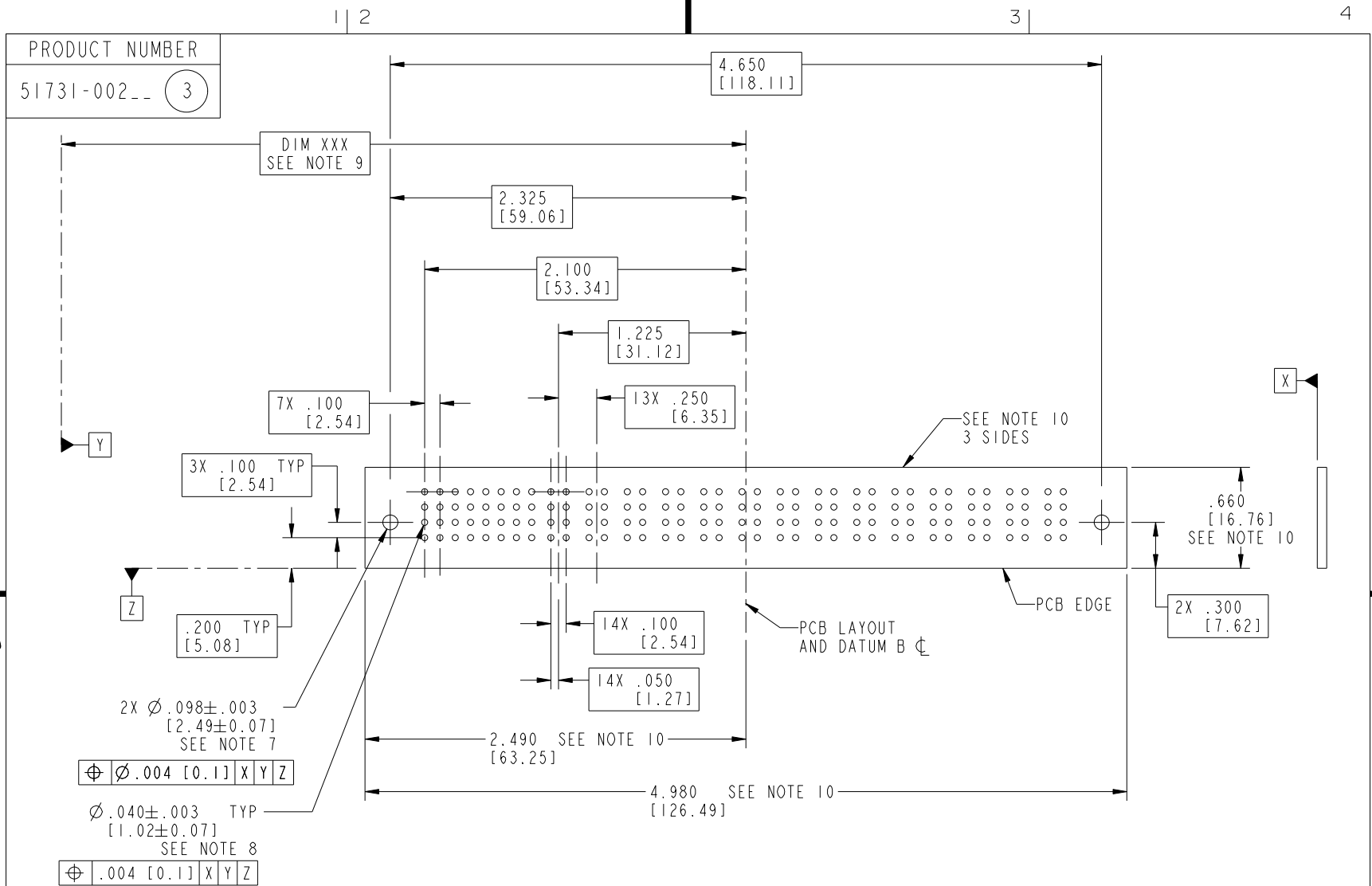
STAT: Released

Printed: Dec 20, 2010

Tous droits strictement réservés. Reproduction ou communication a des tiers interdite sous quelque forme que ce soit sans autorisation écrite du propriétaire. Propriété de c FCI. Droits de reproduction FCI.



All rights strictly reserved. Reproduction or issue to third parties in any form whatever is not permitted without written authority from the proprietor. Property of FCI. Copyright FCI.



RECOMMENDED PCB LAYOUT

mat'l code		SEE NOTE 2		tolerances unless otherwise specified		CUSTOMER		FCI	
ltr	ecn no.	dr	date	linear	.XX ± .01 / 0.X ± 0.3	COPY		www.fciconnect.com	
F				angles	.XX ± .005 / 0.XX ± 0.13 .XXX ± .0020 / 0.XXX ± 0.051	projection		title 32S + 14P RIGHT ANGLE SOLDER HEADER	
				dr	$0^{\circ} + 2^{\circ}$	INCH/MM		product family PwrBlade code 213	
				engr	J. SHAFFER 03-26-02	scale		size dwg no	
				chr	M. MOSTOLLER 03-26-02	1:1		A 51731-002	
				appd	M. MOSTOLLER 03-26-02			sheet 3 of 4	
sheet index	revision sheet								

B

B

Pro/E

PDM: Rev:F

STATUS: Released

Printed: Dec 20, 2010

PRODUCT NUMBER

51731-002_ (3)

NOTES:

1. DIMENSIONS AND TOLERANCES ARE IN ACCORDANCE WITH ASME Y14.5M, 1994 UNLESS OTHERWISE SPECIFIED.

CONNECTOR NOTES:

- 2. HOUSING MATERIAL: UL 94 V-0 GLASS FILLED HIGH-TEMP THERMOPLASTIC
POWER CONTACT MATERIAL: COPPER ALLOY
SIGNAL PIN MATERIAL: COPPER ALLOY
- 3. 51731-002;51731-002LF;51731-002GLF PLATING SPEC. SEE PRINT:10064183
- 4. MANUFACTURER'S NAME, P/N, AND DATE CODE TO APPEAR ON THIS SURFACE.
- 5. PRODUCT SPECIFICATION GS-12-149.
APPLICATION SPECIFICATION BUS-20-067.

PCB NOTES:

- 6. ALL HOLE DIAMETERS ARE FINISHED HOLE SIZE.
- 7. MOUNTING HOLES, WHERE APPLICABLE, ARE UNPLATED.
- 8. $\varnothing .0453 \pm 0.0010$ [1.151 \pm 0.025] DRILLED HOLES PLATED WITH 0.0003 [0.008] MIN SnPb OR Sn OVER .001 [0.03] TO .003 [0.08] Cu PLATING TO ACHIEVE $\varnothing .040 \pm .003$ [1.02 \pm .07] HOLE.
- 9. "DIM XXX" TO BE DETERMINED BY THE CUSTOMER.
- 10. CONNECTOR KEEP-OUT ZONE.

mat'l code		SEE NOTE 2		tolerances unless otherwise specified		CUSTOMER		FCI		www.fciconnect.com	
ltr	ecn no.	dr	date	linear	.XX \pm .01 / 0.X \pm 0.3	projection	COPY		title		
F					.XXX \pm .005 / 0.XX \pm 0.13		32S + 14P		RIGHT ANGLE SOLDER HEADER		
				angles	.XXX \pm .0020 / 0.XXX \pm 0.051		product family		PwrBlade		code
				dr	J. SHAFFER 03-26-02		size		dwg no		213
				enrg	M. MOSTOLLER 03-26-02	INCH/MM	A		51731-002		sheet
				chr	M. MOSTOLLER 03-26-02	scale	1:1				4 of 4
				appd	M. MOSTOLLER 03-26-02						
sheet index	revision sheet										

Tous droits strictement réservés. Reproduction ou communication a des tiers interdite sous quelque forme que ce soit sans autorisation écrite du propriétaire. Propriété de c FCI. Droits de reproduction FCI.



All rights strictly reserved. Reproduction or issue to third parties in any form whatever is not permitted without written authority from the proprietor. Property of FCI. Copyright FCI.