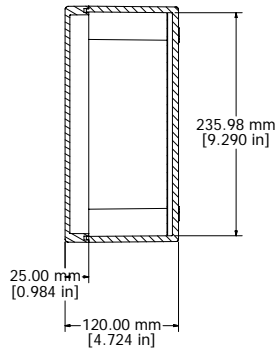
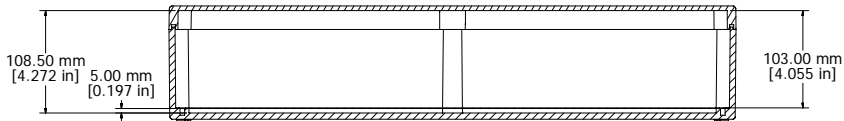
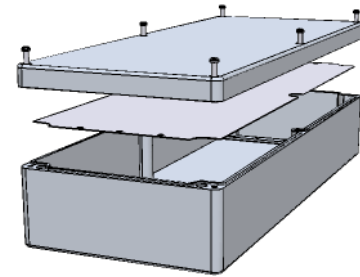


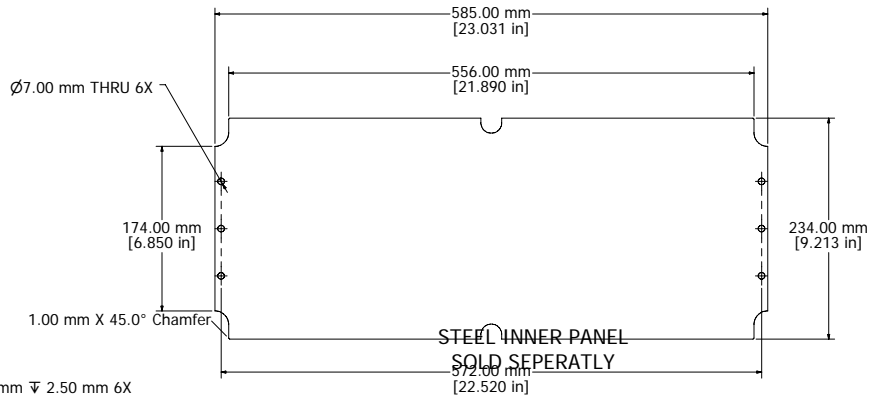
ASSEMBLY



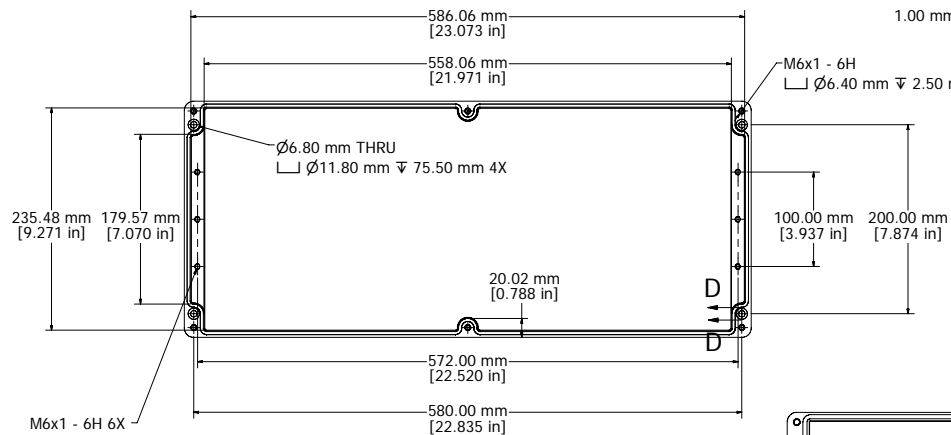
SECTION A-A



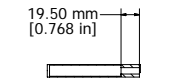
SECTION B-B



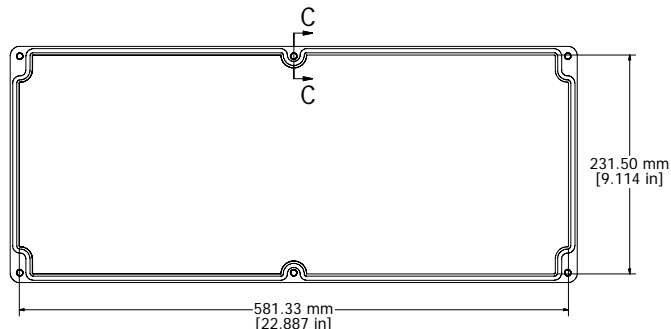
INNER PANEL



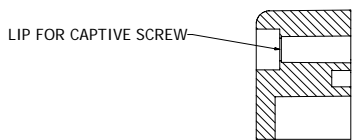
BOX - INSIDE



SECTION D-D



LID - INSIDE



SECTION C-C

UL US LISTED
File #E65324
NEMA 4, 4X

FIBERGLASS ENCLOSURE	
INCLUDES	
1	ENCLOSURE
6	M6 x 28mm PAN HEAD SCREWS
ACCESSORIES	
STEEL INNER PANEL	1590ZGRP263PL

HAMMOND MANUFACTURING
1590ZGRP263
www.hammondmfg.com