
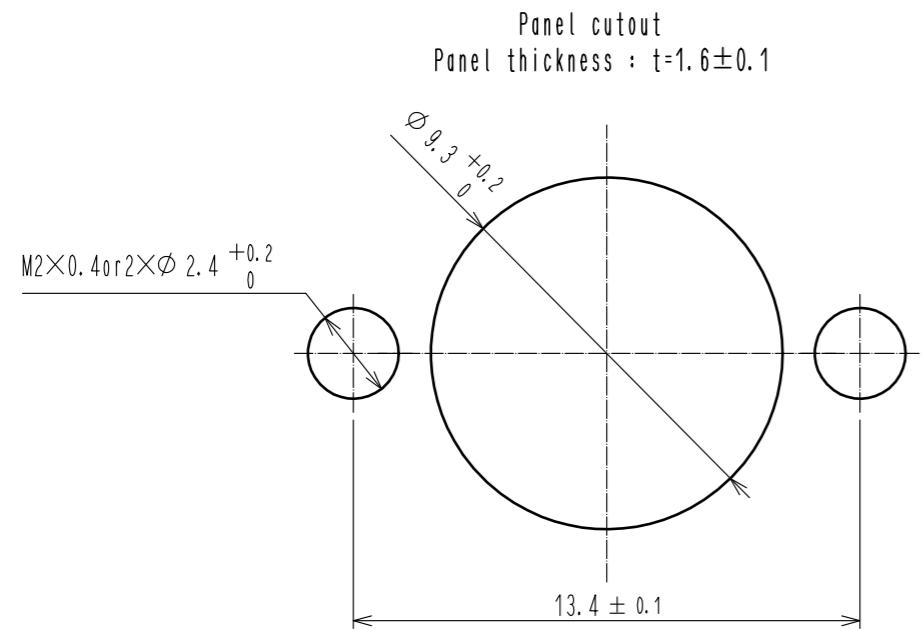
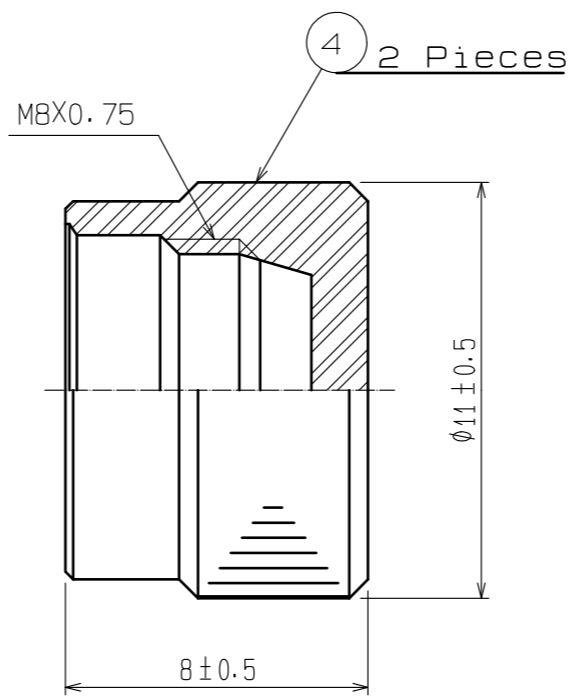
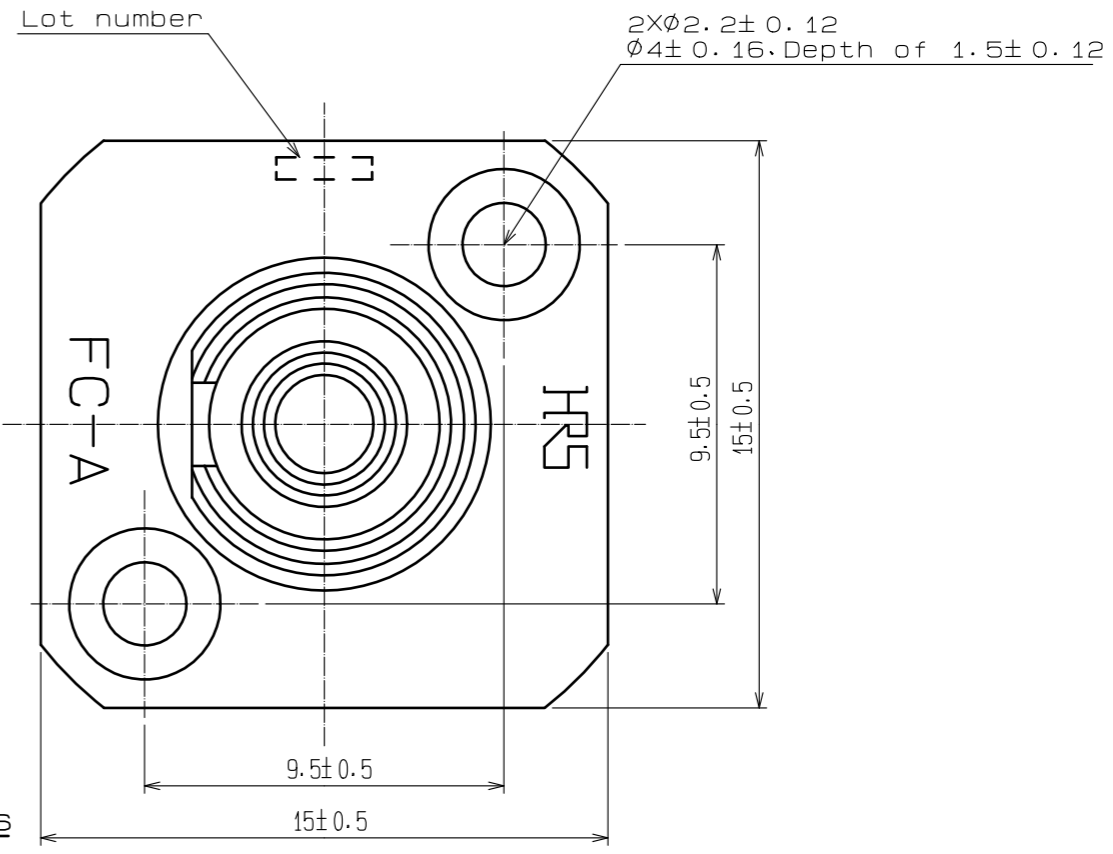
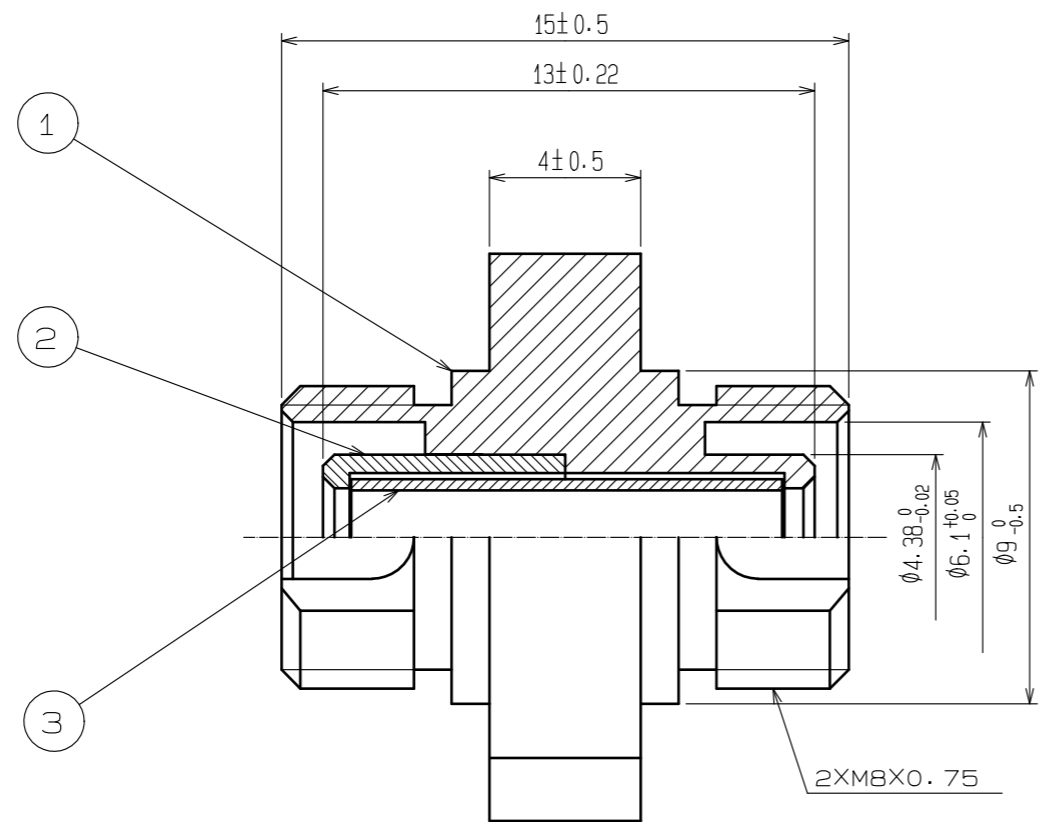


Applicable standard					
Rating	Operating temperature range	-25 °C to 70 °C	Storage temperature range	-25 °C to 70 °C ( At packing )	
<b>Specifications</b>					
Item	Test method	Requirements	QT	AT	
<b>Construction</b>					
General examination	Visually and measuring instrument.	According to drawing.	X	X	
Marking	Confirmed visually.				
<b>Optical characteristics</b>					
Insertion Loss	Measurement at wavelength 1310±30nm(LD).	0.4 dB max.	X	X	
Return Loss	Measurement at wavelength 1310±30nm(LD)	40 dB min.	X	-	
<b>Mechanical characteristics</b>					
Ferrule withdrawal	Zirconia gauge 2.499±0.0005 mm dia.	2.0 N to 5.9 N	X	-	
Durability	500 times	1. Insertion Loss range : 0.2dB max. 2. No breakage , crack or looseness on components	X	-	
Shock	Acceleration of 981 m/s <sup>2</sup> , 6 ms duration , half sine shock pulse , 10 cycle in each of the 3 axis.		X	-	
Vibration	Frequency : 10 to 55 Hz , single amplitude of 0.75 mm , 2 hours in each of the 3 axis.		X	-	
<b>Environmental characteristics</b>					
Humidity	Humidity:90 to 96 % Temperature:-10 to 65 °C Time:480 hours (20 cycles)	1. Insertion Loss range : 0.2dB max. 2. No breakage , crack or looseness on components	X	-	
Change of temperature	Temperature:-40 to 75 °C Time:336 hours (42 cycles)		X	-	
Dry heat	Temperature:85 °C ,Time:960 hours		X	-	
Cold	Temperature:-25 °C ,Time:960 hours		X	-	
Salt mist	Salt mist:5 % ,Time:48 hours		No heavy corrosion ruins the function.	X	-
	COUNT	DESCRIPTION OF REVISIONS	DESIGNED	CHECKED	DATE
	0				
REMARK			APPROVED	MT. SHIBUTANI	15. 11. 27
1 : Insertion loss shall be measured by SM ( 9.5 / 125 ) fiber cord ( 2m ) with master connector.			CHECKED	YY. HIYAMA	15. 11. 27
2 : A product corresponding to RoHS.			DESIGNED	FS. YOSHIDA	15. 11. 26
			DRAWN	FS. YOSHIDA	15. 11. 26
Note	QT:Qualification Test	AT:Assurance Test	×:Applicable Test	DRAWING NO.	ELC-170038-52-00
<b>HS</b>	SPECIFICATION SHEET		PART NO.	HRFC-PA11-G1 (52)	
	HIROSE ELECTRIC CO., LTD.		CODE NO.	CL701-0071-2-52	 1/1



NOTE 1 Delivered with cap installed.

2	Brass	Nickel plated	4	POM resin	Color : White			
1	Brass	Nickel plated	3	Phosphor bronze				
NO.	MATERIAL	FINISH . REMARKS	NO.	MATERIAL	FINISH . REMARKS			
UNITS	mm	SCALE	5 : 1	COUNT	DESCRIPTION OF REVISIONS	DESIGNED	CHECKED	DATE
<b>HRS</b> HIROSE ELECTRIC CO., LTD.		APPROVED : MT. SHIBUTANI	15.11.27	DRAWING NO. EDC-170038-52-00				
		CHECKED : YY. HIYAMA	15.11.27	PART NO. HRFC-PA11-G1(52)				
		DESIGNED : FS. YOSHIDA	15.11.26	CODE NO. CL701-0071-2-52				
		DRAWN : FS. YOSHIDA	15.11.26					