

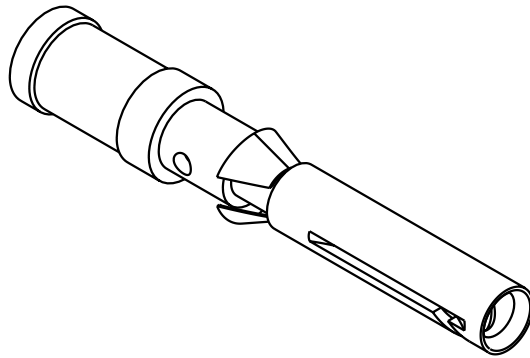
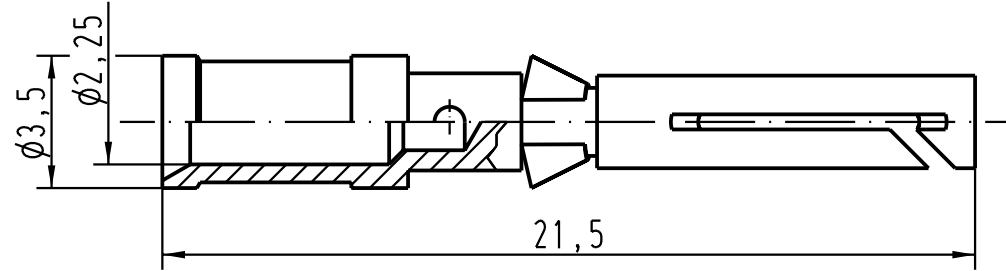
1 2 3 4 5 6

A


B

C

D



Leiterquerschnitt/ *wire gauge*: $2,5\text{mm}^2$ / AWG 14
 Oberfläche/ *surface*: Gold Tec (NiP+Au)

 All Dimensions in mm Original Size DIN A 4		Techn. Character.			Nicht tolerierte Masse/ <i>Free size tolerances</i>		
			Dat.	Name	Massstab/ <i>Scale</i> 5:1	Kontaktbuchse-c <i>crimp-contact</i>	
			Detail.	14.05.04 Loe.			
			Insp.	KR			
			Stand.				
411022			HARTING Electric GmbH & Co. KG D-32339 Espelkamp			TB 09 15 000 6406	Blatt/ <i>page</i> /
Mod.	Dat.	Name	