

RF360 Europe GmbH

A Qualcomm – TDK Joint Venture

SAW Components

Low-Loss Filter for Mobile Communication

Data Sheet B4926

Series/type: B4926
Ordering code:

Date: Apr 02, 2003
Version:

RF360 products mentioned within this document are offered by RF360 Europe GmbH and other subsidiaries of RF360 Holdings Singapore Pte. Ltd. (collectively, the “RF360 Subsidiaries”). RF360 Holdings Singapore Pte. Ltd. is a joint venture of Qualcomm Global Trading Pte. Ltd. and EPCOS AG. References in this documentation to EPCOS AG should properly reference, and shall be read to reference, the RF360 Subsidiaries.

RF360 Europe GmbH, Anzinger Str. 13, München, Germany

© 2016 RF360 Europe GmbH and/or its affiliated companies. All rights reserved.

These materials, including the information contained herein, may be used only for informational purposes by the customer. The RF360 Subsidiaries assume no responsibility for errors or omissions in these materials or the information contained herein. The RF360 Subsidiaries reserve the right to make changes to the product(s) or information contained herein without notice. The materials and information are provided on an AS IS basis, and the RF360 Subsidiaries assume no liability and make no warranty or representation, either expressed or implied, with respect to the materials, or any output or results based on the use, application, or evaluation of such materials, including, without limitation, with respect to the non-infringement of trademarks, patents, copyrights or any other intellectual property rights or other rights of third parties.

No use of this documentation or any information contained herein grants any license, whether express, implied, by estoppel or otherwise, to any intellectual property rights, including, without limitation, to any patents owned by QUALCOMM Incorporated or any of its subsidiaries.

Not to be used, copied, reproduced, or modified in whole or in part, nor its contents revealed in any manner to others without the express written permission of RF360 Europe GmbH.

Qualcomm and Qualcomm RF360 are trademarks of Qualcomm Incorporated, registered in the United States and other countries. RF360 is a trademark of Qualcomm Incorporated. Other product and brand names may be trademarks or registered trademarks of their respective owners.

This technical data may be subject to U.S. and international export, re-export, or transfer ("export") laws. Diversion contrary to U.S. and international law is strictly prohibited.



SAW Components

Data Sheet B4926

© EPCOS AG 2015. Reproduction, publication and dissemination of this publication, enclosures hereto and the information contained therein without EPCOS' prior express consent is prohibited.

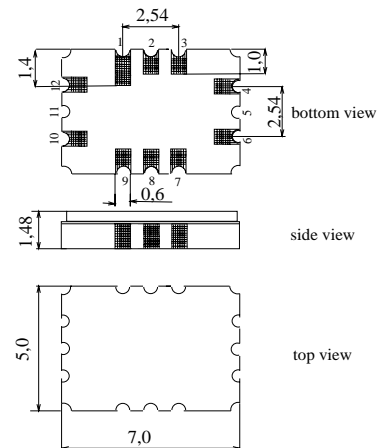
EPCOS AG is a TDK Group Company.


 Ceramic package **QCC12C**
Features

- Low-loss IF filter for mobile telephone
- Channel selection in GSM systems
- Hermetically sealed ceramic SMD package
- Balanced and unbalanced operation possible
- No coupling coil required

Terminals

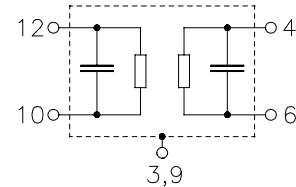
- Gold-plated Ni



Dimensions in mm, approx. weight 0,25 g

Pin configuration

10	Input
12	Input ground or balanced input
4	Output
6	Output ground or balanced output
3, 9	Case ground
1, 2, 7, 8	To be grounded



Type	Ordering code	Marking and Package according to	Packing according to
B4926	B39131-B4926-H310	C61157-A7-A95	F61074-V8710-Z000

Electrostatic Sensitive Device (ESD)

Maximum ratings

Operable temperature range	T	- 30/+ 85	°C	Human Body Model
Storage temperature range	T_{stg}	- 40/+ 85	°C	
DC voltage	V_{DC}	5	V	
Source power	P_s	10	dBm	
ESD	V_{ESD}	50	V	

Data Sheet

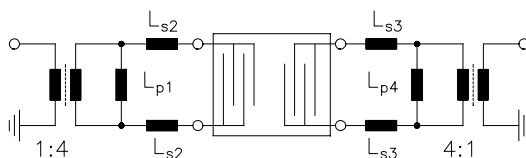
Characteristics

Operating temperature range:	$T = -30\text{ °C} \dots +80\text{ °C}$
Terminating source impedance:	$Z_S = 1000\ \Omega \parallel 135\text{ nH}$
Terminating load impedance:	$Z_L = 1300\ \Omega \parallel 170\text{ nH}$

		min.	typ.	max.	
Nominal frequency	f_N	—	133,20	—	MHz
Minimum insertion attenuation (excluding losses in matching circuit)	α_{\min}		4,5	6,0	dB
Amplitude ripple (p-p) $f_N - 100,0\text{ kHz} \dots f_N + 100,0\text{ kHz}$	$\Delta\alpha$	—	0,4	1,0	dB
Group delay ripple (p-p) $f_N - 100,0\text{ kHz} \dots f_N + 100,0\text{ kHz}$	$\Delta\tau$	—	0,3	1,0	μs
Relative attenuation (relative to α_{\min})	α_{rel}				
$f_N - 30,00\text{ MHz} \dots f_N - 7,00\text{ MHz}$		40	48	—	dB
$f_N - 7,00\text{ MHz} \dots f_N - 3,00\text{ MHz}$		35	42	—	dB
$f_N - 3,00\text{ MHz} \dots f_N - 0,80\text{ MHz}$		29	32	—	dB
$f_N - 0,80\text{ MHz} \dots f_N - 0,60\text{ MHz}$		20	29	—	dB
$f_N - 0,60\text{ MHz} \dots f_N - 0,40\text{ MHz}$		15	19	—	dB
$f_N - 0,40\text{ MHz} \dots f_N - 0,25\text{ MHz}$		3	6,5	—	dB
$f_N + 0,25\text{ MHz} \dots f_N + 0,40\text{ MHz}$		3	6,5	—	dB
$f_N + 0,40\text{ MHz} \dots f_N + 0,60\text{ MHz}$		15	17	—	dB
$f_N + 0,60\text{ MHz} \dots f_N + 0,80\text{ MHz}$		20	27	—	dB
$f_N + 0,80\text{ MHz} \dots f_N + 3,00\text{ MHz}$		29	31	—	dB
$f_N + 3,00\text{ MHz} \dots f_N + 7,00\text{ MHz}$		35	39	—	dB
$f_N + 7,00\text{ MHz} \dots f_N + 30,00\text{ MHz}$		40	46	—	dB
Impedance within pass band					
Input: $Z_{\text{IN}} = R_{\text{IN}} \parallel C_{\text{IN}}$		—	1000 \parallel 10,3	—	$\Omega \parallel \text{pF}$
Output: $Z_{\text{OUT}} = R_{\text{OUT}} \parallel C_{\text{OUT}}$		—	1300 \parallel 8,2	—	$\Omega \parallel \text{pF}$
Temperature coefficient of frequency ¹⁾	TC_f	—	-0,042	—	ppm/K ²
Frequency inversion point	T_0	—	25	—	°C

¹⁾ Temperature dependence of f_c : $f_c(T) = f_c(T_0)(1 + TC_f(T - T_0)^2)$

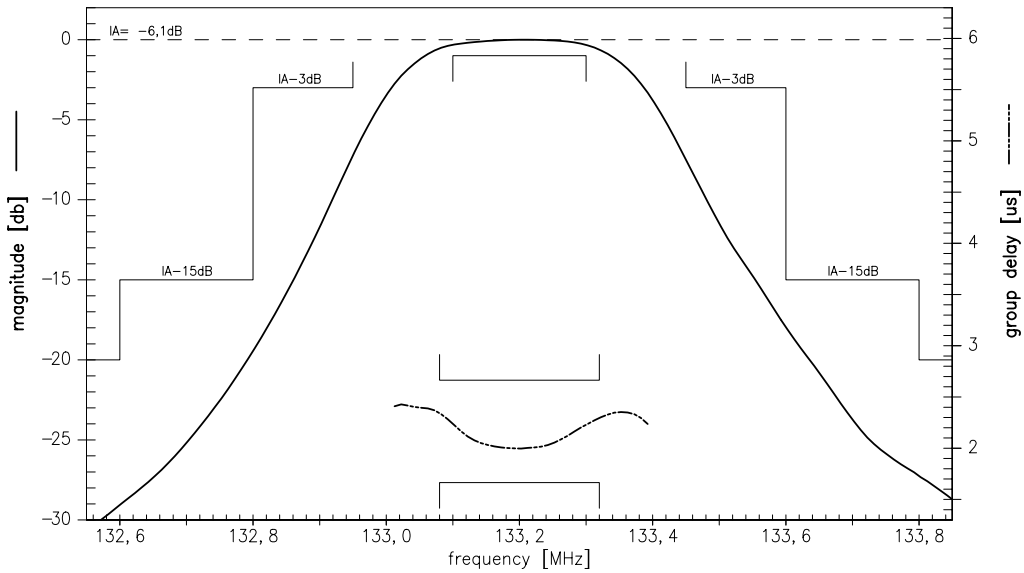
Test matching network to 50 Ω (element values depend on PCB layout):



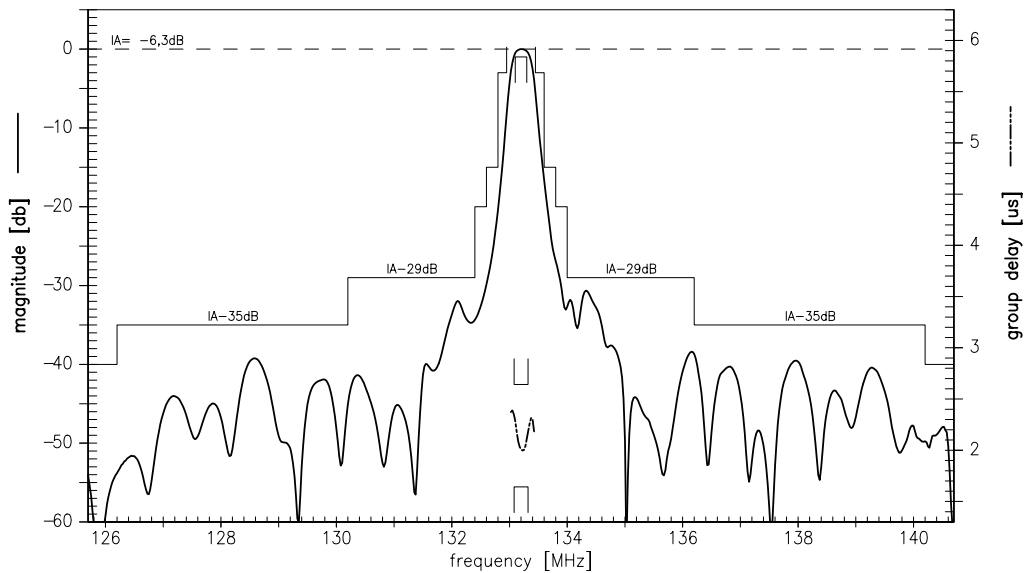
L_{p1}	= 82 nH
L_{s2}	= 27 nH
L_{s3}	= 43 nH
L_{p4}	= 82 nH



Transfer function (pass band):



Transfer function (wide band):



**Published by EPCOS AG****Surface Acoustic Wave Components Division, SAW MC WT****P.O. Box 80 17 09, D-81617 München**

© EPCOS AG 2002. All Rights Reserved. Reproduction, publication and dissemination of this brochure and the information contained therein without EPCOS' prior express consent is prohibited.

The information contained in this brochure describes the type of component and shall not be considered as guaranteed characteristics. Purchase orders are subject to the General Conditions for the Supply of Products and Services of the Electrical and Electronics Industry recommended by the ZVEI (German Electrical and Electronic Manufacturers' Association), unless otherwise agreed.

This brochure replaces the previous edition.

For questions on technology, prices and delivery please contact the Sales Offices of EPCOS AG or the international Representatives.

Due to technical requirements components may contain dangerous substances. For information on the type in question please also contact one of our Sales Offices.