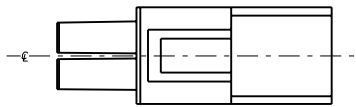
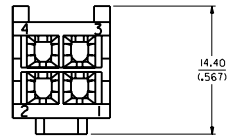
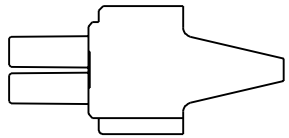
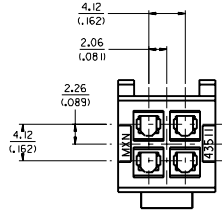
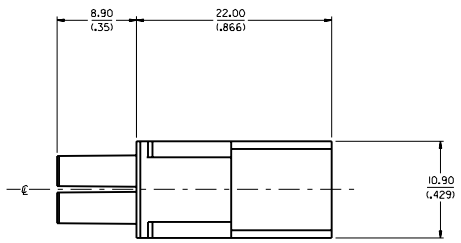


NOTES:

1. MATERIAL: POLYESTER (PBT), UN-FILLED, UL 94V-0. COLOR: BLACK
2. FINISH: NONE
3. PRODUCT SPEC. : PS-43510-002
4. ALL DIMENSIONS SHOWN FOR REFERENCE ONLY.
5. USES STANDARD 5556 AND 44485 MINI-FIT JR. FEMALE CRIMP TERMINALS.
6. PART MATES WITH 43514-0001 PLUG PDD.
7. PART TO BE USED WITH 43838-0*** RECEPTACLE SHROUD.
(SEE SHROUD DRAWING FOR ASSEMBLY INFORMATION)



ADDED LEAD-INS EC NO. UCR 1999-0594 DRW/POL/GAR 99/03/11 CPM/COM/ERC 99/03/15 APPR/COM/ERC 99/02/15	QUALITY SYMBOLS	GENERAL TOLERANCES: (UNLESS SPECIFIED)	SCALE: 4:1	DESIGN UNITS: <input checked="" type="checkbox"/> mm <input type="checkbox"/> INCH	THIRD ANGLE PROJECTION	DIMENSIONS: <input checked="" type="checkbox"/> INCH <input type="checkbox"/> mm <input type="checkbox"/> mm ONLY	SHT 1	REV
	MAJOR	4 PLACES ±0.--- ±.---	DRAWN BY & DATE: COMERC I 97/10/06	TITLE: MINI FIT JR. RECEPTACLE, 4 CIRCUIT, DUAL ROW COMPODRE SYSTEM		REVISION ON CAD ONLY		
	CRITICAL	3 PLACES ±0.--- ±.---	CHECKED BY & DATE: COMERC I 97/10/06	APPROVED BY & DATE: FRY 97/10/10				
	MINOR	2 PLACES ±0.--- ±.---	1 PLACE ±0.--- ±.---	CAD FILENAME: S4351101.DGN	MATERIAL NO.: 43511-0001	DRAWING NO.: SD-43511-001	SHEET NO.: 1 OF 1	
REV	DESCRIPTION	ANGULAR: ± 0	DRAFT WHERE APPLICABLE MUST REMAIN WITHIN DIMENSIONS		THIS DRAWING CONTAINS INFORMATION THAT IS PROPRIETARY TO MOLEX INCORPORATED AND SHOULD NOT BE USED WITHOUT WRITTEN PERMISSION.			SIZE D