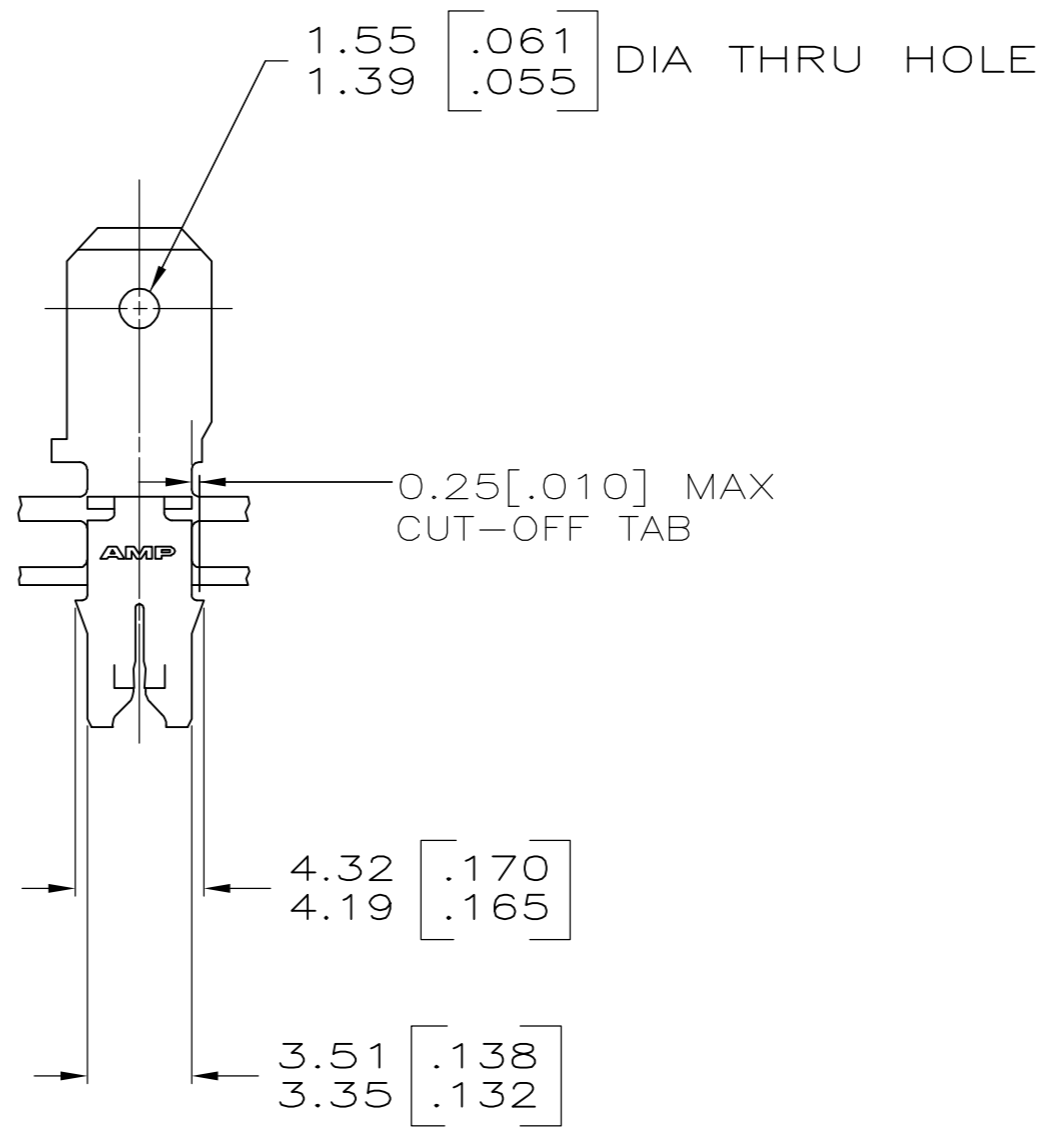
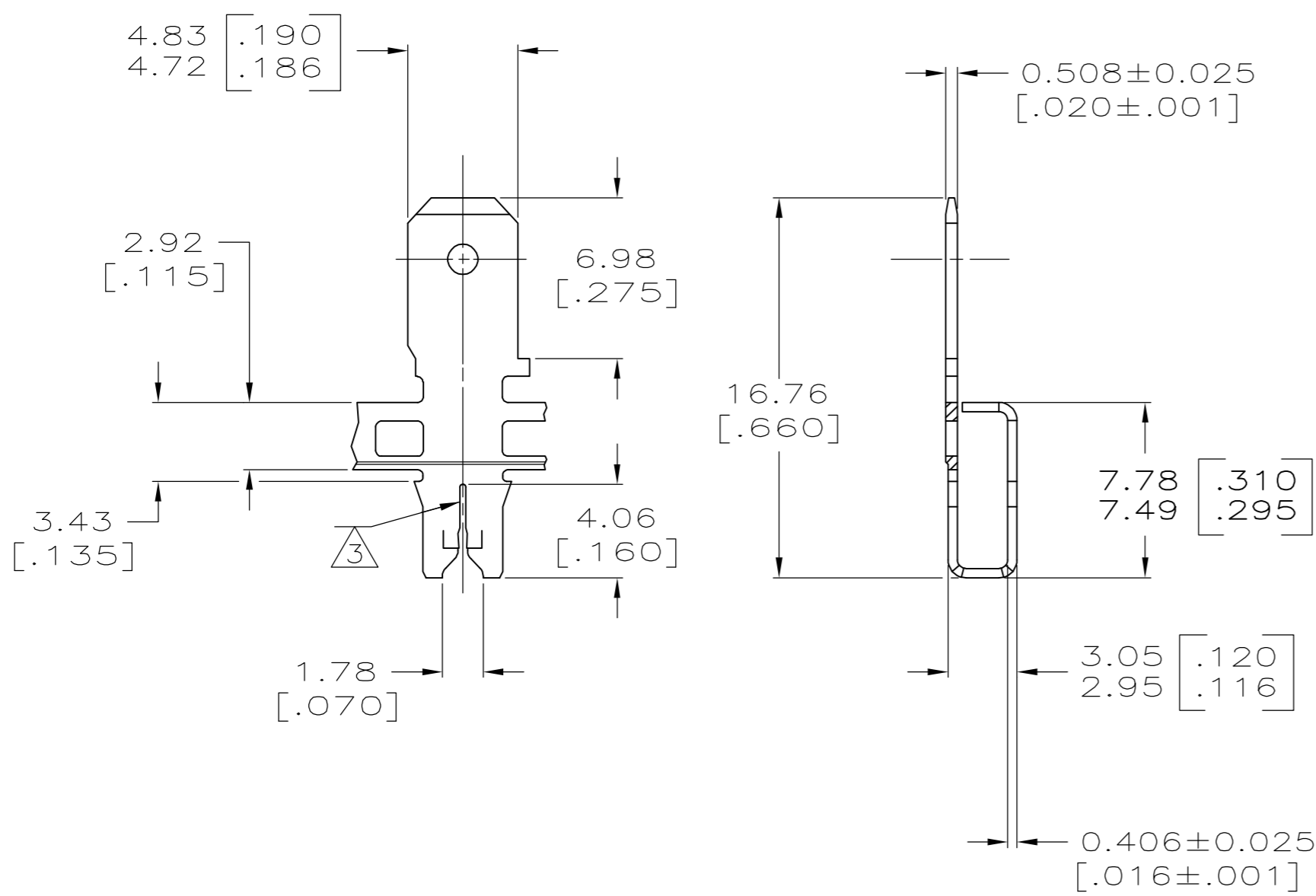


THIS DRAWING IS UNPUBLISHED. RELEASED FOR PUBLICATION
 © COPYRIGHT BY TYCO ELECTRONICS CORPORATION. ALL RIGHTS RESERVED.

LOC	DIST	REVISIONS			
P	LTR	DESCRIPTION	DATE	DWN	APVD
AF	50	B	REVISED PER OG3A-0067-05	7FEB05	MF KR



- 1 CONTINUOUS STRIP ON REELS WITH TERMINALS LOCATED ON 5.59±0.08 [.220±.003] CENTERS.
- 2 AFTER INSERTION INTO PLASTIC HOLDER TAB PORTION MUST BE BENT 45° TO 90° OR POTTED-IN TO PREVENT PULL-OUT WHEN MATING RECEPTACLE IS DISCONNECTED.
- 3 SLOT TERMINATES EITHER SINGLE OR DOUBLE MAGNET WIRE OF THE SAME SIZE AND TYPE. COPPER RANGE: 0.36-0.57mm [#27-#23] AWG.
- 4 0.002032 [.000080] MIN TIN PLATE.



4		63585-1	
FINISH		PART NUMBER	
		Tyco Electronics Corporation Harrisburg, Pa 17105-3608	
NAME		TAB, 4.75 [.187] FASTON, 300 SERIES MAG-MATE	
SIZE	CAGE CODE	DRAWING NO	RESTRICTED TO
A2	00779	C=63585	-
SCALE		SHEET	OF
4:1		1	1
CUSTOMER DRAWING		REV	B

THIS DRAWING IS A CONTROLLED DOCUMENT.		DWN	7FEB2005
MICHAEL S. FEHER		CHK	7FEB2005
KURT A. RANDOLPH		APVD	7FEB2005
KURT A. RANDOLPH		PRODUCT SPEC	108-2012
APPLICATION SPEC		WEIGHT	-
114-2046		CUSTOMER DRAWING	

DIMENSIONS:	TOLERANCES UNLESS OTHERWISE SPECIFIED:
INCHES	0 PLC ± -
	1 PLC ± -
	2 PLC ± -
	3 PLC ± 0.25 [.010]
	4 PLC ± -
	ANGLES ± -
	FINISH SEE TABLE

63585

A