

4

3

2

1

THIS DRAWING IS UNPUBLISHED. RELEASED FOR PUBLICATION
© COPYRIGHT ALL RIGHTS RESERVED.

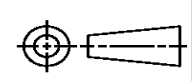
LOC	DIST	REVISIONS			
P	LTR	DESCRIPTION	DATE	DWN	APVD
	AA2	ECR-14-002654	24FEB2014	GK	HMR

REPLACED BY OCEAN STYLE APPLICATOR PART NUMBER 2151428-1

FOR REPLACEMENT PARTS FOR APPLICATOR 466423
REFER TO ADDITIONAL PAGE(S). SPARE PARTS KIT (IF LISTED)
WILL REMAIN AVAILABLE.

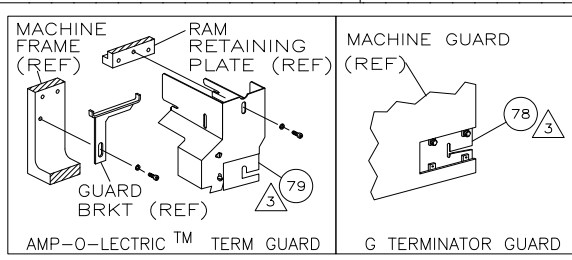
THE REPLACEMENT OCEAN STYLE APPLICATOR HAS THE
SAME TERMINATOR/PRESS INTERFACE AS APPLICATOR
466423

THIS DRAWING IS A CONTROLLED DOCUMENT.		DWN	GOPALAKRISHNA HV																				
DIMENSIONS:		CHK	RAGHAVENDRA																				
TOLERANCES UNLESS OTHERWISE SPECIFIED:		APVD	RAGHAVENDRA																				
<table border="0"> <tr><td>0</td><td>PLC</td><td>±</td></tr> <tr><td>1</td><td>PLC</td><td>±</td></tr> <tr><td>2</td><td>PLC</td><td>±</td></tr> <tr><td>3</td><td>PLC</td><td>±</td></tr> <tr><td>4</td><td>PLC</td><td>±</td></tr> <tr><td></td><td>ANGLES</td><td>±</td></tr> </table>		0	PLC	±	1	PLC	±	2	PLC	±	3	PLC	±	4	PLC	±		ANGLES	±	NAME	SIDE FEED HDM APPLICATOR		
0	PLC	±																					
1	PLC	±																					
2	PLC	±																					
3	PLC	±																					
4	PLC	±																					
	ANGLES	±																					
MATERIAL		PRODUCT SPEC																					
FINISH		APPLICATION SPEC																					
		WEIGHT	SIZE	CAGE CODE	DRAWING NO																		
			A3		©- 466423																		
		CUSTOMER ACCESSIBLE PRODUCTION DRAWING		SCALE	SHEET 1 OF 2 REV AA2																		



THIS DRAWING IS UNPUBLISHED. RELEASED FOR PUBLICATION BY TYCO ELECTRONICS CORPORATION. ALL RIGHTS RESERVED.

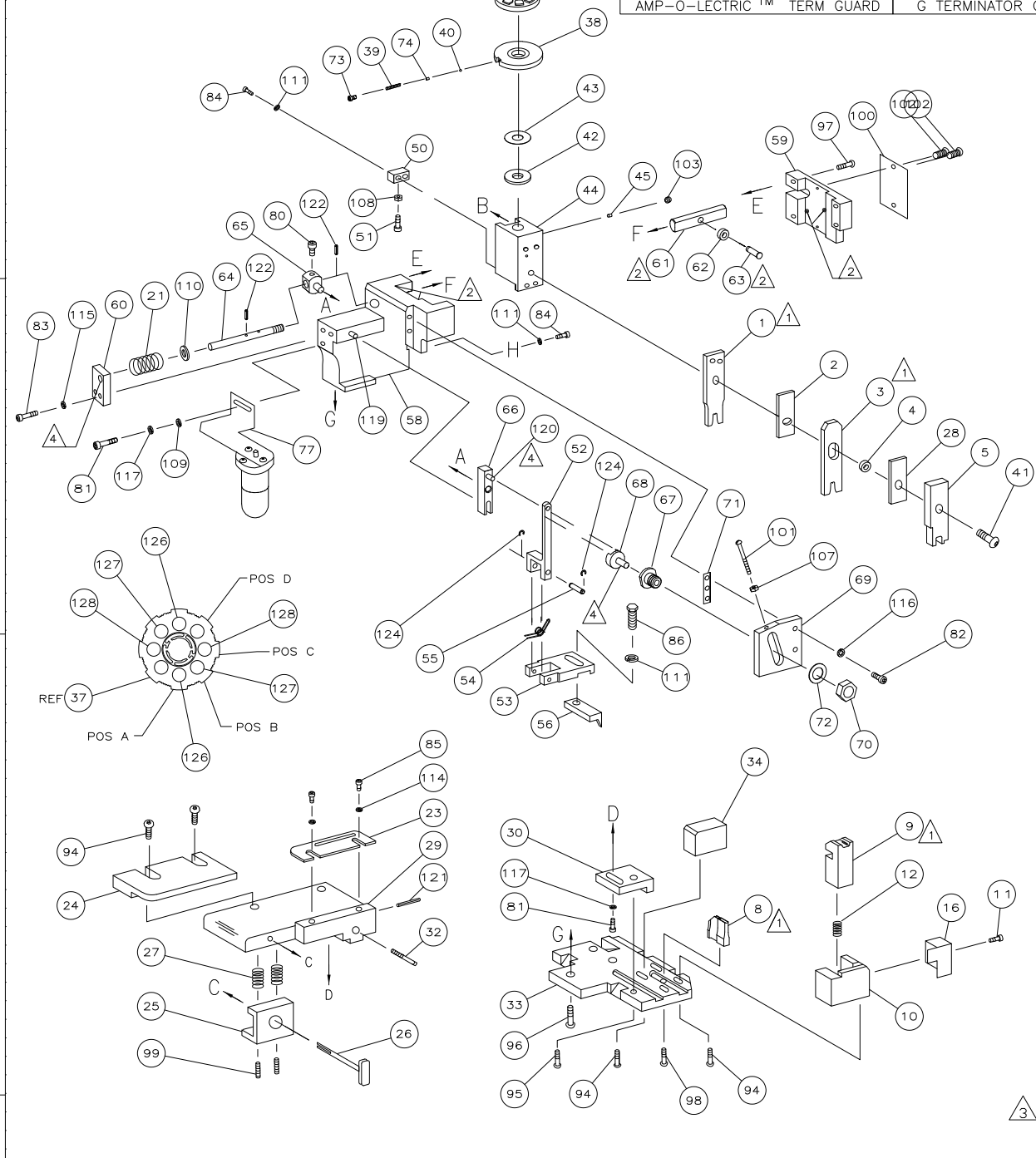
PART NUMBER	REV	FIRST USED
466423-1	AA	854400-1
466423-2	AA	565435-5
466423-3	-	SEE DWG 466423-3
466423-4	AA	354500-1
7-466423-7	U	-



TERMINAL NAME: 20 DF CONTACT		CRIMPING DATA	
PIN	SOCKET	PAD LTR	CRIMP HEIGHT
66507	66505	A	.032 ±.001 [0.81 ±0.02mm]
215862	745502	B	.030 ±.001 [0.76 ±0.02mm]
1658540	1658538	C	NOT USED
166054	166052	D	.026 ±.001 [0.66 ±0.02mm]
		CRIMP	SIZE
		WIRE	.042 [1.07mm]
		INSUL	.055 [1.4mm]
		TYPE	RANGE
		F	28-24
		FEED	APPL INSTRUCTION
		.300	408-8040
		SET UP GAGE	LAYOUT
		458637-1	646

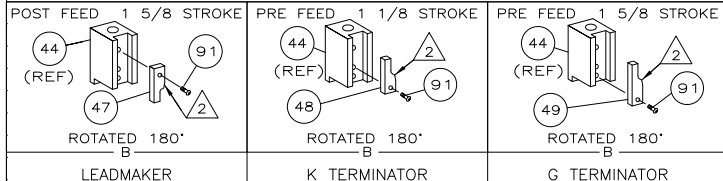
LOC	DIST	REVISIONS	
A	66	DESCRIPTION	DATE
AA1	ECR-07-016647		7-2007

REV	BY	DESCRIPTION
-1	LEADMAKER	MECH POST FEED
-2	BENCH MODEL K	MECH PRE FEED
-4	BENCH MODEL G	MECH PRE FEED



QTY	REV	REF	DESCRIPTION	ITEM NO	
-	2	2	7-354779-2	PIN, WIRE DISC (.3350)D	129
-	2	2	6-354779-2	PIN, WIRE DISC (.3300)B	128
-	2	2	5-354779-8	PIN, WIRE DISC (.3280)A	126
-	1	1	986950-1	WASHER, FLAT PRECISION	125
-	REF	REF	21045-3	RING, RET "C" (Ø.187)FD FING PIN	124
-	REF	REF	REF		123
-	REF	REF	REF		122
-	1	1	5-21028-1	PIN, SLT SPR(Ø.125x.50)ADJ ROD	121
-	1	1	4-21028-0	PIN, SLT SPR(Ø.093x.75)ST GDE PL	120
-	REF	REF	REF	PIN, DOWEL(Ø.187x.50)LEVER	119
-	REF	REF	REF	PIN, DOWEL(Ø.187x1.25)HOUSING	118
-	1	2	21024-5	WASHER, LOCK(#10)ADJ BLOCK	117
-	REF	REF	REF	WASHER, LOCK(#10)ADJ PLATE	116
-	REF	REF	REF	WASHER, LOCK(#10)FEED GDE ROD	115
-	2	2	21024-2	WASHER, LOCK(#4)FRONT STP GUIDE	114
-	REF	REF	REF		113
-	REF	REF	REF		112
-	4	4	21024-4	WASHER, LOCK(#8)STRIPPER	111
-	REF	REF	REF	WASHER, FLAT(Ø5/16)SCREW ADJ	110
-	-	1	21899-2	WASHER, FLAT(NO.10)LUB ASSY	109
-	1	1	21018-5	NUT, HEX(NO.6)HOLDDOWN	108
-	REF	REF	REF	NUT, HEX(6-32)FEED ADJ	107
-	REF	REF	REF		106
-	REF	REF	REF		105
-	1	1	21009-2	SCR, SKT SET(1/4-20x.25 LW)RAM	103
-	2	2	21017-2	SCR, DRIVE(#2x.19)ID PLATE	102
-	REF	REF	REF	SCR, PAN HD(6-32x1.50)FEED ADJ	101
-	1	1	461264-1	PLATE, IDENTIFICATION	100
-	2	2	5-21006-6	SCR, SET(10-32x.75)DRAG	99
-	1	1	22733-8	SCR, BHC(8-32x.38 LW)ANVIL	98
-	REF	REF	REF	SCR, BHC(10-32x.75)CAP	97
-	REF	REF	REF	SCR, BHC(1/4-20x.62)HOUSING	96
-	REF	REF	REF	SCR, BHC(10-32x.50)SG ADJ BLOCK	95
-	6	6	2-21002-2	SCR, BHC(8-32x.50)SHEAR	93
-	REF	REF	REF		92
-	1	1	1-21002-7	SCR, BHC(6-32x.38)CAM	91
-	REF	REF	REF		90
-	REF	REF	REF		89
-	REF	REF	REF		88
-	REF	REF	REF		87
-	1	1	2-22603-0	SCR, HEX HD(8-32x.31)FEED FINGER	86
-	2	2	1-21000-3	SCR, SHC(4-40x.25)F ST GUIDE	85
-	3	3	2-21000-7	SCR, SHC(8-32x.50)STRIPPER	84
-	REF	REF	REF	SCR, SHC(10-32x.75)FEED ROD GD	83
-	REF	REF	REF	SCR, SHC(10-32x.62)FD ADJ BLK	82
-	1	2	3-21000-4	SCR, SHC(10-32x.38)SG ADJ BL	81
-	REF	REF	REF	SCR, SHC(10-32x.38)PIVOT BLK	80
-	REF	REF	REF	GUARD, WINDOW	79
-	REF	REF	REF	INSERT, GUARD	78
-	-	1	1-465184-0	LUBRICATOR ASSY	77
-	REF	REF	REF		76
-	REF	REF	REF		75
-	1	1	690603-1	SPRING, ASSIST	74
-	1	1	23030-1	SCR, SHC(6-32x.25)SL/INS DISC	73
-	REF	REF	REF	WASHER, SPECIAL	72
-	REF	REF	REF	SPACER	71
-	-	-	-		70
-	-	-	-		69
-	-	-	-		68
-	-	-	-		67
-	-	-	-		66
-	-	-	-		65
-	-	-	-		64
-	-	-	-		63
-	-	-	-		62
-	-	-	-		61
-	-	-	-		60
-	-	-	-		59
-	-	-	-		58
-	-	-	-		57
-	-	-	-		56
-	-	-	-		55
-	-	-	-		54
-	-	-	-		53
-	-	-	-		52
-	-	-	-		51
-	-	-	-		50
-	-	-	-		49
-	-	-	-		48
-	-	-	-		47
-	-	-	-		46
-	-	-	-		45
-	-	-	-		44
-	-	-	-		43
-	-	-	-		42
-	-	-	-		41
-	-	-	-		40
-	-	-	-		39
-	-	-	-		38
-	-	-	-		37
-	-	-	-		36
-	-	-	-		35
-	-	-	-		34
-	-	-	-		33
-	-	-	-		32
-	-	-	-		31
-	-	-	-		30
-	-	-	-		29
-	-	-	-		28
-	-	-	-		27
-	-	-	-		26
-	-	-	-		25
-	-	-	-		24
-	-	-	-		23
-	-	-	-		22
-	-	-	-		21
-	-	-	-		20
-	-	-	-		19
-	-	-	-		18
-	-	-	-		17
-	-	-	-		16
-	-	-	-		15
-	-	-	-		14
-	-	-	-		13
-	-	-	-		12
-	-	-	-		11
-	-	-	-		10
-	-	-	-		9
-	-	-	-		8
-	-	-	-		7
-	-	-	-		6
-	-	-	-		5
-	-	-	-		4
-	-	-	-		3
-	-	-	-		2
-	-	-	-		1

QTY	REV	REF	DESCRIPTION	ITEM NO	
-	1	1	458537-2	PAWL, FEED	56
-	REF	REF	REF	PIN, FEED FINGER	55
-	REF	REF	REF	SPRING, FEED FINGER	54
-	REF	REF	REF	HOLDER, FEED FINGER	53
-	REF	REF	REF	LEVER, TERMINAL FEED ARM	52
-	1	1	811242-2	BUMPER, HOLDDOWN	51
-	1	1	690753-1	SPACER, TONKER	50
-	1	-	690602-6	CAM, PRE-FEED 1 5/8 ST	49
-	-	1	690602-5	CAM, PRE-FEED 1 1/8 ST	48
-	-	1	690501-4	CAM, POST-FEED 1 5/8 ST	47
-	1	1	459456-1	APPLICATOR, BASIC (SUBASSY)	46
-	1	1	690191-1	PLUG, NYLON	45
-	1	1	455673-3	RAM	44
-	1	1	690125-1	WASHER, LAMINATED	43
-	1	1	690124-3	WASHER, RAM	42
-	1	1	7-21002-9	BOLT, CRIMPER(5/16x1.00)	41
-	1	1	23241-6	BALL, STEEL	40
-	1	1	690170-1	SPRING, COMPRESSION	39
-	1	1	690142-1	DISC, INSULATION	38
-	1	1	354777-1	WIRE DISC, PLASTIC	37
-	1	1	22480-5	WASHER, SPRING	36
-	1	1	690212-1	POST, RAM	35
-	1	1	690786-6	SUPPORT, TERMINAL	34
-	REF	REF	REF	PLATE, BASE	33
-	1	1	690432-3	SCREW, ADJUSTMENT	32
-	REF	REF	REF		31
-	REF	REF	REF	BLOCK, STRIP GUIDE ADJ	30
-	1	1	455671-8	PLATE, STRIP GUIDE	29
-	1	1	1-455888-0	SPACER, FRONT SHEAR DEP	28
-	2	2	1-22284-0	SPRING, DRAG	27
-	1	1	690546-1	LEVER, DRAG RELEASE	26
-	1	1	240792-1	DRAG, TERMINAL	25
-	1	1	8-690504-0	GUIDE, STRIP (REAR)	24
-	1	1	690438-1	GUIDE, STRIP (FRONT)	23
-	-	-	-	STRIPPER	22
-	REF	REF	REF	SPRING, FEED RETURN	21
-	1	1	691353-1	STRIPPER	19
-	REF	REF	REF		18
-	REF	REF	REF		17
-	1	1	691667-1	GUARD, CHIP (FRONT)	16
-	REF	REF	REF		15
-	REF	REF	REF		14
-	REF	REF	REF		13
-	1	1	3-22280-3	SPRING, SHEAR	12
-	1	1	690461-1	STOP, SHEAR	11
-	1	1	690459-1	HOLDER, SHEAR (FRONT)	10
-	1	1	462006-1	SHEAR, FLOAT (FRONT)	9
-	1	1	4-458834-9	ANVIL	8
-	REF	REF	REF		7
-	REF	REF	REF		6
-	1	1	2-455889-0	DEPRESSOR, SHEAR (FRONT)	5
-	1	1	2-238011-3	SPACER, BLOCK CRIMPER	4
-	1	1	5-456135-8	CRIMPER, INSULATION	3
-	1	1	455888-2	SPACER, CRIMPER	2
-	1	1	456401-5	CRIMPER, WIRE	1



- 1 RECOMMENDED SPARE PARTS.
 - 2 GREASE LIGHTLY.
 - 3 GUARD MUST BE IN PLACE WHEN OPERATING APPLICATOR IN A BENCH MACHINE.
 - 4 LUBRICATE DAILY USING NO. 20 MACHINE OIL.
5. ITEMS WITH QTY OF REF SPECIFIED (EXCEPT ITEMS 78 AND 79) ARE USED ON ITEM 46.

