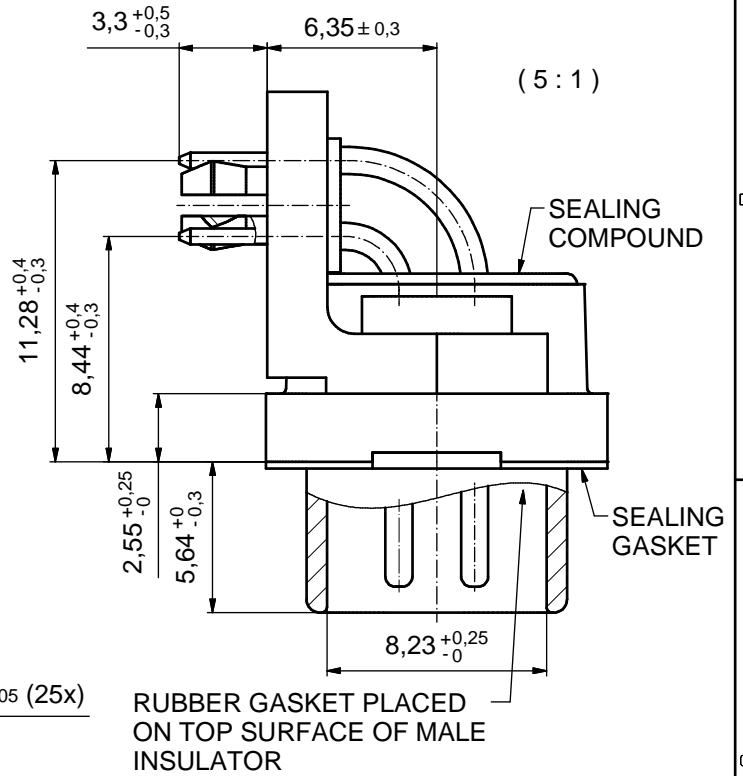
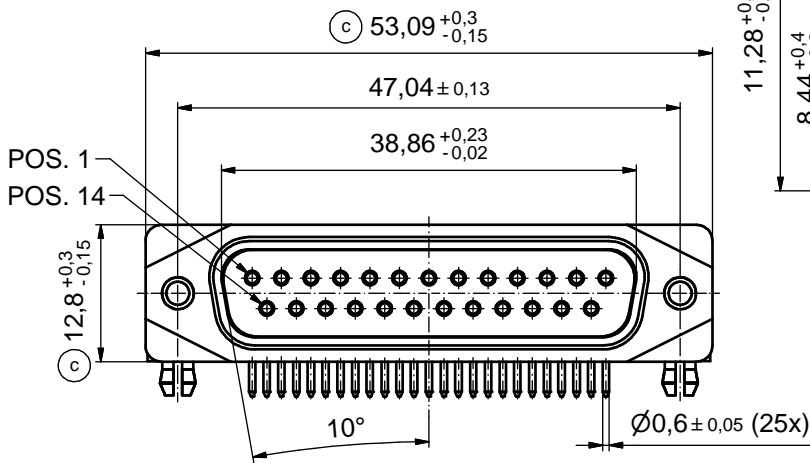
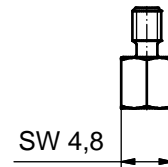
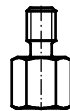
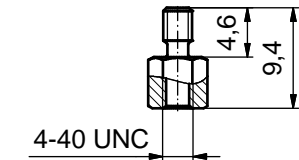
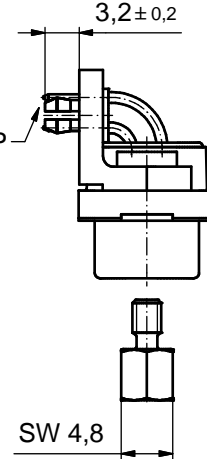
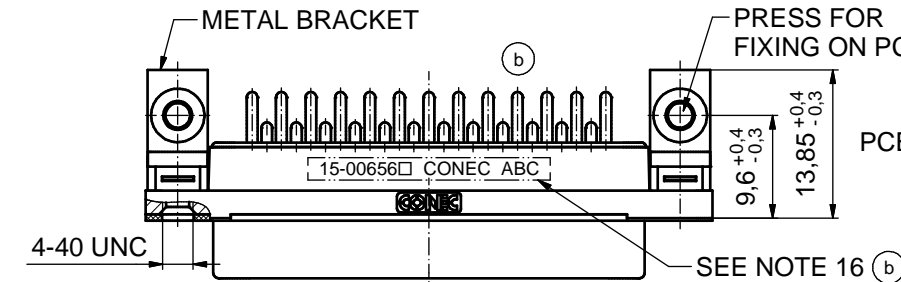


AT ALL TIMES WATER RESISTANT CONNECTORS NOT IN USE SHOULD BE COVERED WITH A CONEC WATER RESISTANT CAP OR WATER TIGHT HOOD.



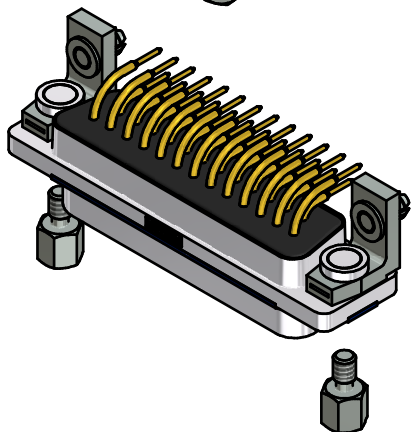
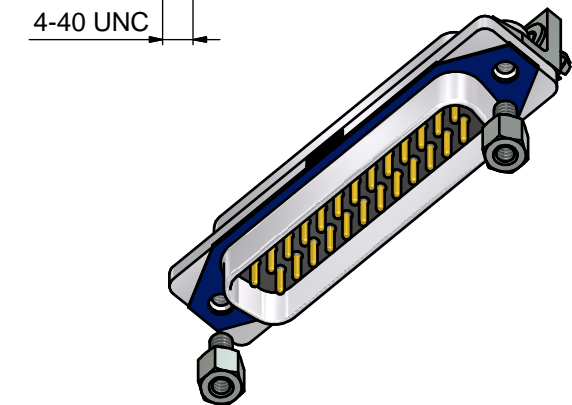
RUBBER GASKET PLACED ON TOP SURFACE OF MALE INSULATOR



(b) (d)

NOTES:

- FOR WAVESOLDERING (SOLDER BATH TEMPERATURE 265°C FOR 8 SEC. AND SOLDER PREHEAT 150°C FOR 180 SEC.)
- IP RATING: IP 67
- SEALED TO WITHSTAND PRESSURE UP TO 1,45 PSI FOR 30 MINUTES AFTER HIGH TEMPERATURE EXPOSURE
- METALSHELL: ZINC DIE CAST; min. 50µin NICKEL PLATING over COPPER
- INSULATORS: PBT GF UL 94 V-0; BLACK
- SEALING GASKET: SILICONE; BLUE
- RUBBER GASKET: TPE; BLACK
- SEALING COMPOUND: EPOXY RESIN UL 94 V-0; BLACK
- CONTACTS: COPPER ALLOY
PLATING (SEE PART NO.): □ PLEASE ADD 1 for 30µin HARD GOLD over min. 50µin NICKEL
□ PLEASE ADD 3 for GOLD FLASH over NICKEL
- METAL BRACKETS: ZINC DIE CAST; 300µin COPPER/40-120µin NICKEL/120-200µin TIN
- WASHERS: COPPER ALLOY; 80µin NICKEL
- HEXLOCKING SCREWS: STAINLESS STEEL
- PCB-SNAPS: COPPER ALLOY; min. 200µin TIN over 80µin NICKEL
PCB-HOLE: Ø3,1 ± 0,1mm; PCB THICKNESS 1,6mm
- P.C.B. HOLE DRILLINGS and RECOMMENDED PANEL CUT-OUT ON SHEET 2
- RECOMMENDED TORQUE FOR MOUNTING SCREW 35Ncm (3.1 in.LB) / max. 67Ncm (6 in.LB)
- CONNECTOR IS PART MARKED: 15-00656 □ CONEC ABC (see note 9)

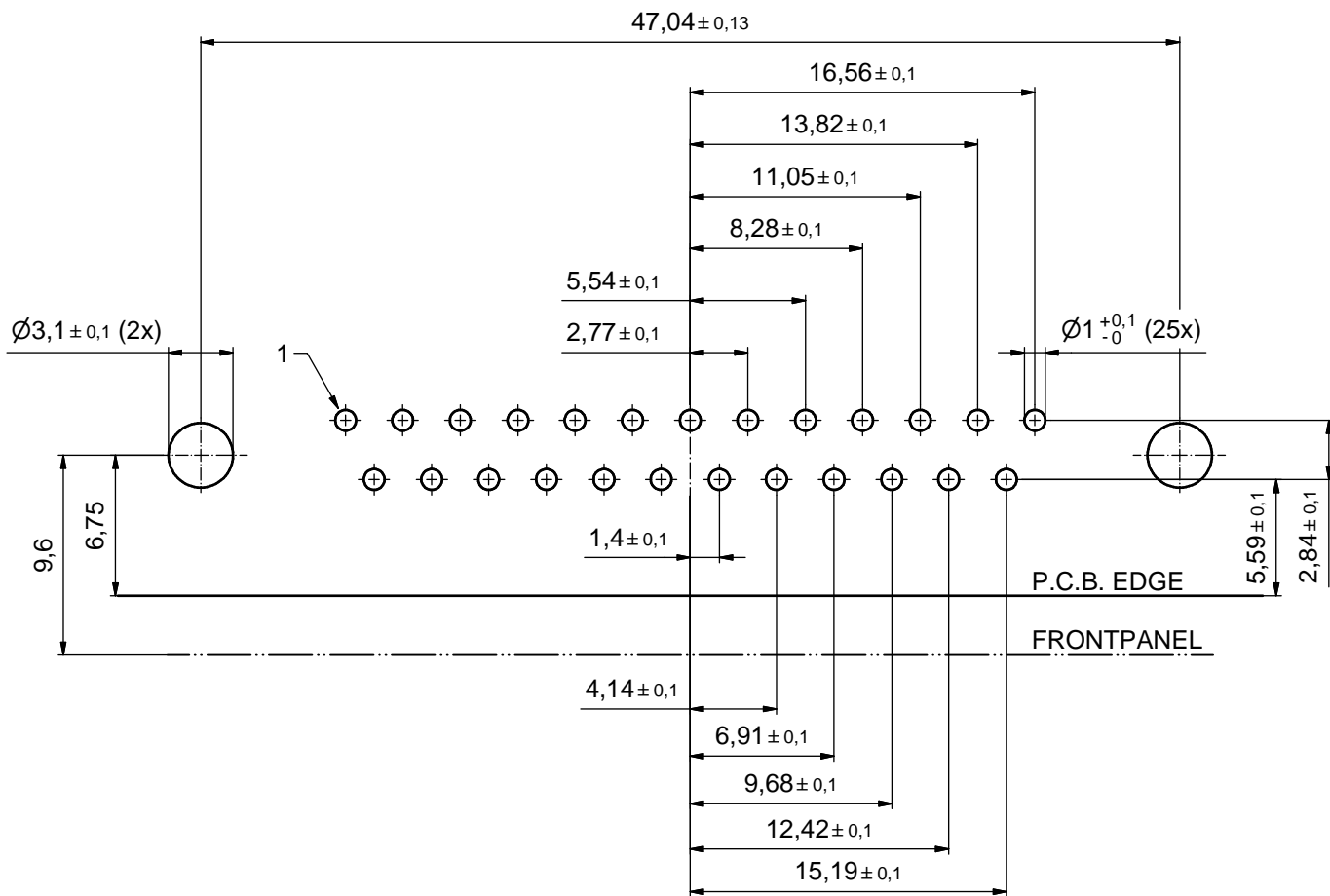


RoHS compliant

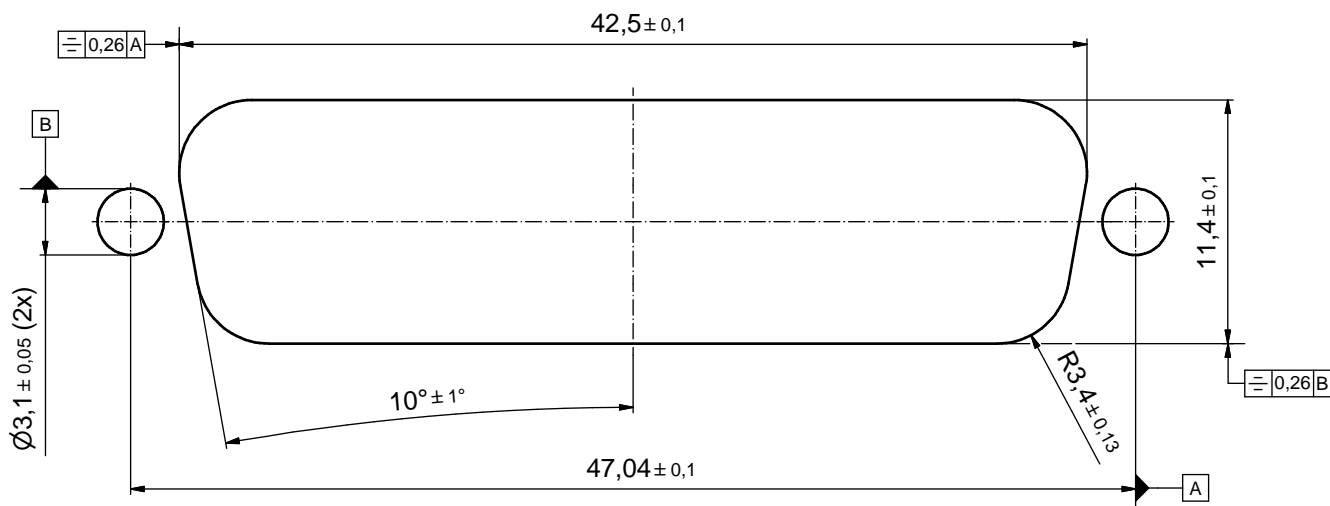
| | | | | | | | |
|--|-------------|------------|----------|--------------|---|-------------------------|--|
| THIS DRAWING MAY NOT BE COPIED OR REPRODUCED IN ANY WAY, AND MAY NOT BE PASSED ON TO A THIRD PARTY WITHOUT WRITTEN PERMISSION. OWNERSHIP AND COPYRIGHT OF CONEC GmbH | | tolerance | | dim. in mm | scale: | 2:1 (5:1) | |
| | | | | | material: | SEE NOTES | |
| DO NOT ALTER CAD DRAWING BY HAND | | date | name | title: | | | |
| | | drawn | 19.09.14 | Lehmenkühler | (d) D-SUB MALE 90° (b) | | |
| | | appd. | 26.01.15 | Fischer | 25pos. SOLDER PIN ANGLED with closed 4-40 UNC thread, metal bracket, snap | | |
| 2 x d | Ä5827 | 25.09.15 | Unkrüer | norm | dwg no: | | |
| 2 x c | Ä5800 | 07.09.15 | M.H. | d-old | 15K1A1553 | | |
| 4 x b | Ä5793 | 02.09.2015 | K.H. | | DIN-A3 | | |
| a | Original | | | | sh: 1 | | |
| rev. | description | date | name | CONEC® | | part no: | |
| | | | | | | 15-00656 □ (see note 9) | |

P.C.B. HOLE DRILLINGS

(P.C.B. TOP SIDE)



RECOMMENDED PANEL CUT-OUT



| | | | | | | |
|---|-------|----------|---|---------------------------|--|-----------------------|
| THIS DRAWING MAY NOT BE COPIED OR REPRODUCED IN ANY WAY, AND MAY NOT BE PASSED ON TO A THIRD PARTY WITHOUT WRITTEN PERMISSION. OWNERSHIP AND COPYRIGHT OF CONEC GmbH DO NOT ALTER CAD DRAWING BY HAND | | | | tolerance | | scale: 4:1 |
| | | | | dim. in mm | | material: SEE SHEET 1 |
| | drawn | 19.09.14 | Lehmenkühler | title: | | |
| | appd. | 26.01.15 | Fischer | P.C.B HOLE DRILLINGS | | |
| | norm | | | RECOMMENDED PANEL CUT-OUT | | |
| d-old | | | D-SUB Male 90° 25pos. Solder pin angled | | | |
| rev. | a | Original | CONEC [®] | | | dwg no: |
| description | | | | | | 15K1A1553 |
| date | | | part no: SEE SHEET 1 | | | DIN-A3 |
| name | | | | | | sh: 2 |