

A

B

C

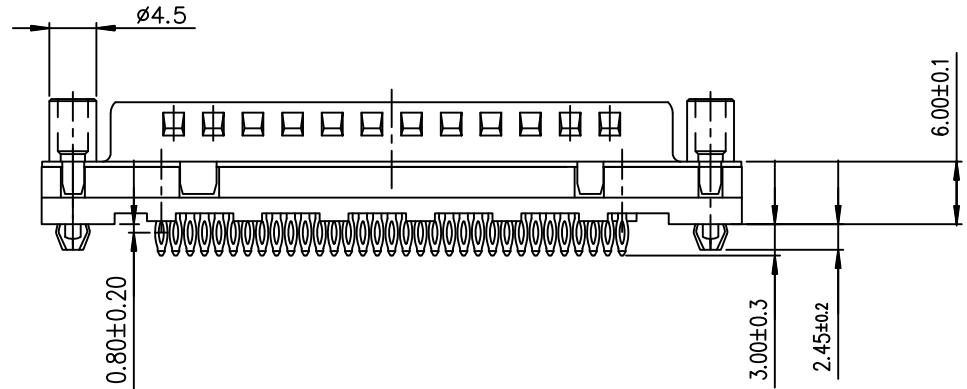
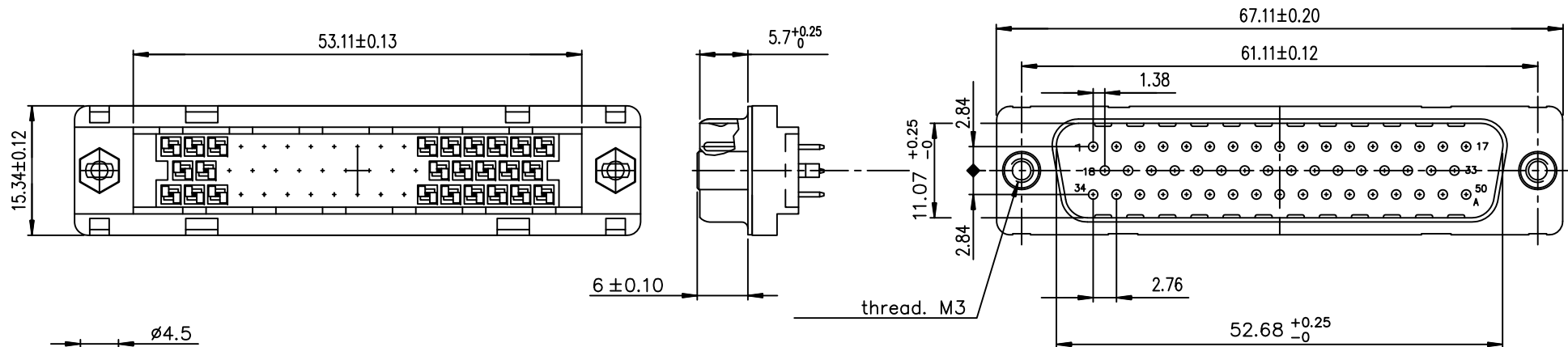
D

A

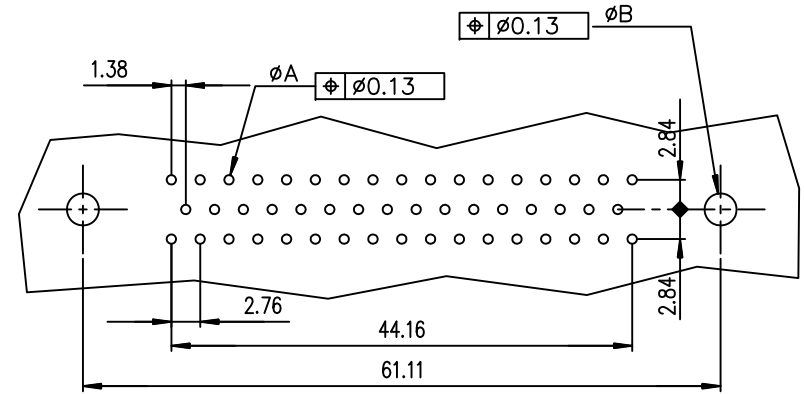
B

C

D



PC board drilling dimensions
(after plating - thickness: 1.60 to 3.20 mm)



ROHS PART NUMBER	
PART NUMBER	
200 Mating	D50P91C4GI00LF
500 Mating	D50P91C6GI00LF

GENERAL CHARACTERISTICS AND ROHS INFORMATIONS:
SEE DRAWING C01-8646-0001

mat'l. code				surface ISO 1302		tolerance ISO 406 ISO 1101		projection		product family D-SUB	
ltr				ecn no		dr		date		title	
A				-		LEN		1996-09-17		MALE CRS DELTA D 50	
B				LS05-004		MPE		2005-02-12		EUROPE STRAIGHT PF SCREWLOCK M3	
C				LS06-0095		LGO		2006-07-20		scale 2:1	
D				LS06-0140		LGO		2006-11-21		dr	
E				111-0062		RPK		2011-04-05		engr	
F				ELX-I-24020		AAB		2016-06-06		chr	
										appd	
sheet index				revision		F				sheet 1 of 1	
				sheet		1				size A3	
										type Product Customer Drawing	