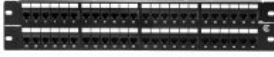


853-50003

Article Number: 853-50003

Description: Category 6 Universal 48 Port Patch Panel, 2U, Black, 1/box



Base Data	
Local Order Number	PP110C648
Type	PP110C648
Color	Black (BK)
Features and Benefits	<ul style="list-style-type: none"> <li>• Write-on labels provided for easy identification.</li> <li>• Clear plastic channel protects PCB and allows easy viewing of wiring label.</li> <li>• Front face provides an attractive, flush appearance.</li> </ul>
Quantity Per	box
Product Description	<p>The Universal 110 Category 6 range of patch panels offer exceptional performance and are also available in 1U 24 port, 1U 48 port right angled and 12 port vertical versions.</p> <p>The 2U 48 Port Panel is constructed of 8 modular units, each offering 6 RJ45 ports allowing for any of the 6 port modules to be replaced in the case of port damage or failure.</p> <p>The Universal 110 2U 48 Port Panel is supplied with or with Rack Snap mounting fixings and an optional rear cable manager is also available.</p> <p>The Universal 110 Category 6 products are designed to support any data or voice protocol that is capable of running over a Category 6 cabling system.</p>
Technical Description	Category 6 Universal 48 Port Patch Panel, 2U, Black
Short Description	Category 6 Universal 48 Port Patch Panel, 2U, Black, 1/box
Product Dimensions	
Height in Units	2U
Port count	48
Width W (Imperial)	19.0"
Wiring	568A
Width W (Metric)	483.0mm
Height H (Imperial)	3.6"
Height H (Metric)	88.0mm
Depth D (imperial)	1.14"
Depth D (metric)	29.0mm

853-50003



Material and Specifications		
	UL Listed (US and Canada)	Yes
Logistic and Packaging		
	Package Quantity (Imperial)	1
	Package Quantity (Metric)	1
	Customs Number(Schedule B)	9030400000