

DETAILS

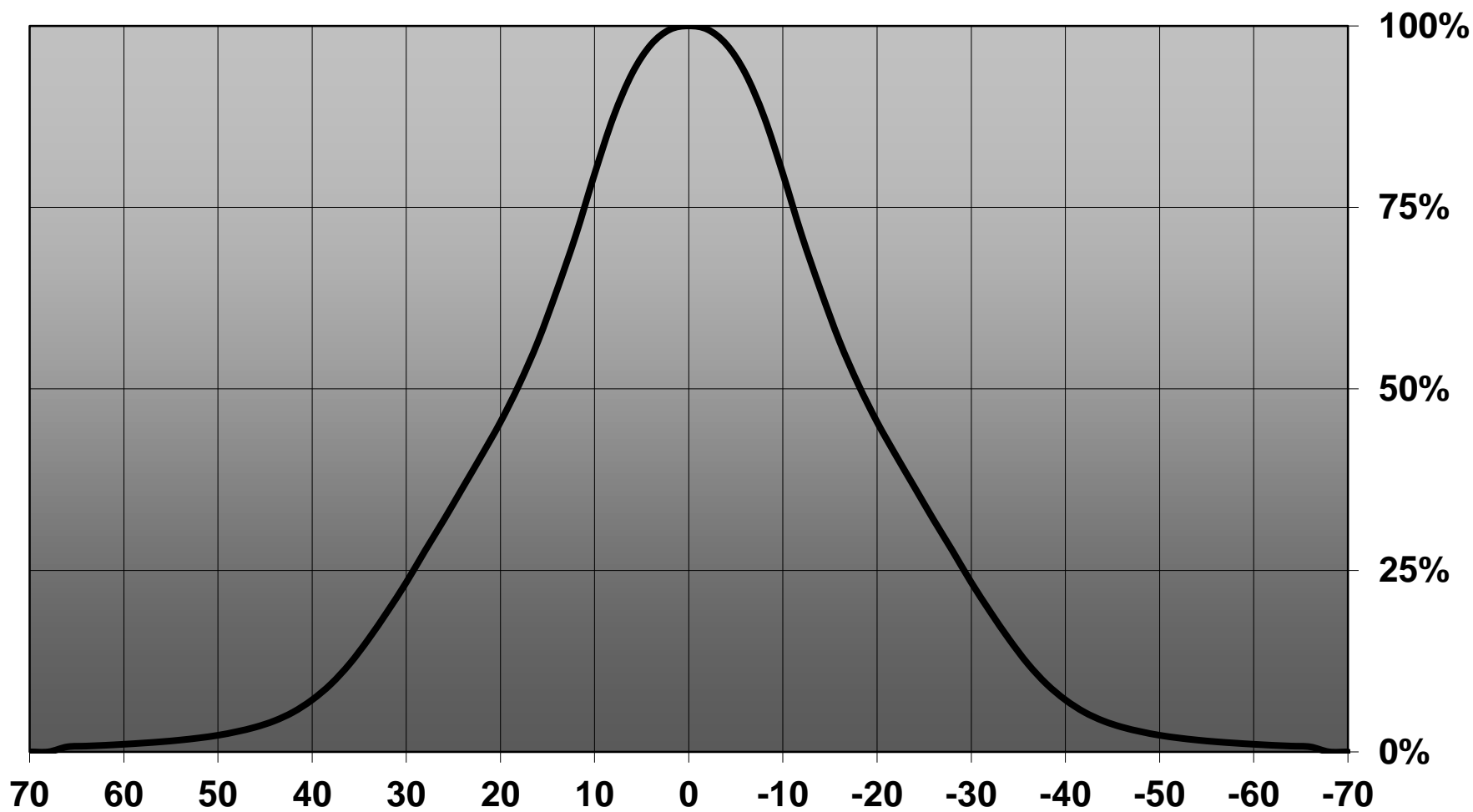
Product Number	FP13029_LISA2-WW-CLIP
Family	Lisa
Type	Assembly
Color	black
Diameter	9,9 mm
Height	6,8 mm
Style	round
Optic Material	PMMA
Holder Material	
Fastening	glue, clips
Status	production ready
ROHS Compliant	Yes
Date Updated	14/04/2016



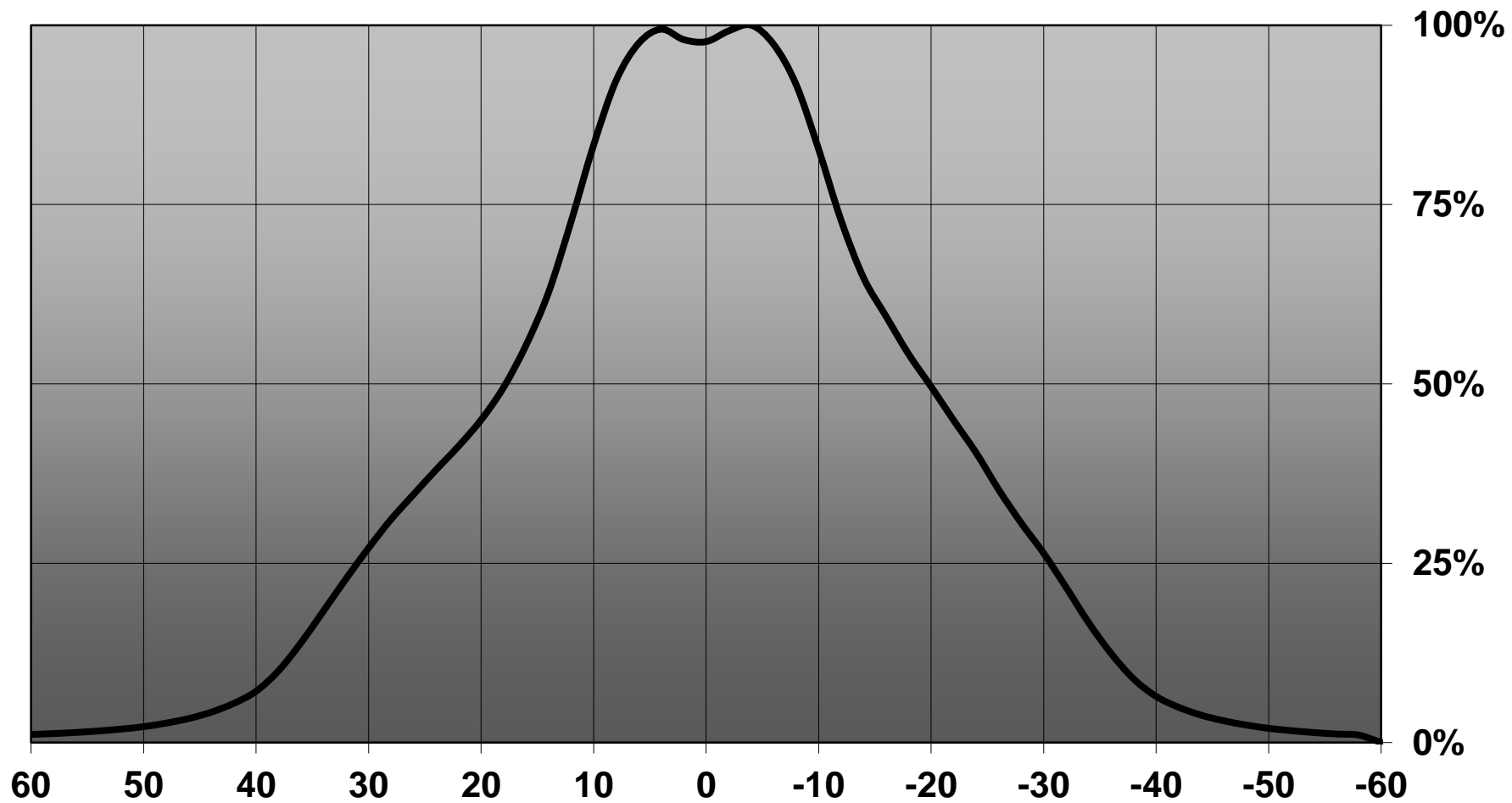
OPTICAL PROPERTIES

LED	Viewing	Light	Effi-		Connector
	Angle	Beam	ciency	cd/lm	
XT-E	47 deg	Very Wide	84 %	1.100	-
XP-G2	47 deg	Very Wide	88 %	1.200	-
XP-E2	43 deg	Very Wide	88 %	1.350	-
XP-G3	42 deg	Very Wide	84 %	1.500	-
LUXEON Q	sim: 54	Very Wide	sim: 84 %	sim: 1.000	-
NCSxx19B	41 deg	Very Wide	86 %	1.500	-
SFH 4715S	36 deg	Very Wide	sim: 91 %	sim: 1.800	-
SFH 4725S	38 deg	Very Wide	sim: 93 %	-	-
Oslon Square EC	46 deg	Very Wide	84 %	1.600	-
SFH 4770S	sim: 35	Very Wide	sim: 91 %	-	-
LH351Z	60 deg	Very Wide	90 %	0.950	-
LH351B	67 deg	Very Wide	88 %	0.890	-
Z8Y22P	sim: 50	Very Wide	sim: 86 %	sim: 1.050	-

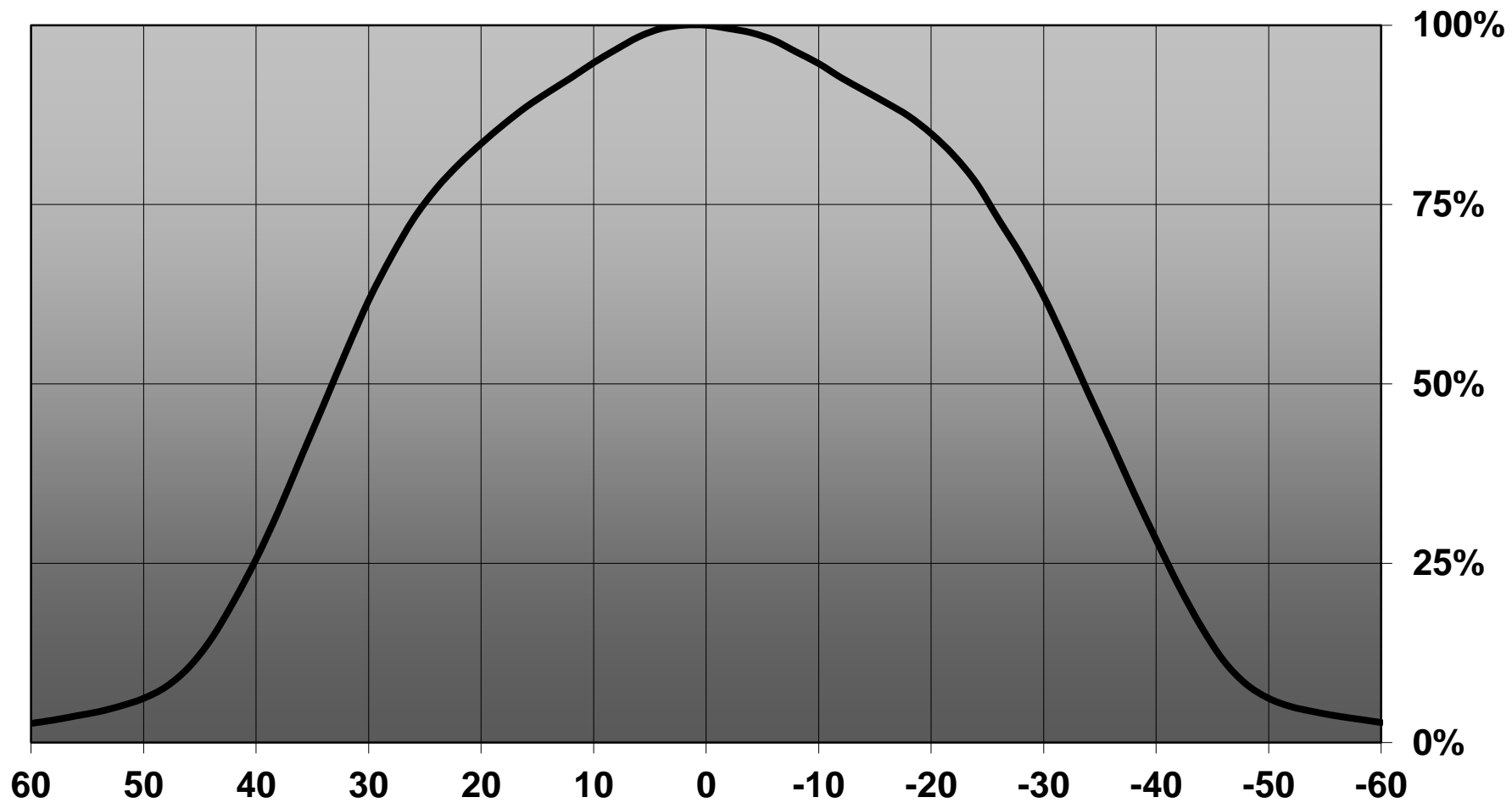
Relative intensity of FP13029&FP13026_LISA2-WW-SFH-IR



Relative intensity of FP13029_LISA2-WW-CLIP_(SFH4725S)



Relative intensity of FP13029_LISA2-WW-CLIP_(LH35B)



D

C

B

A

4

4

3

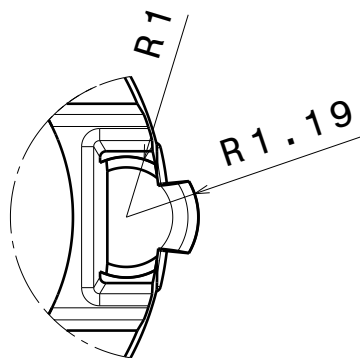
3

2

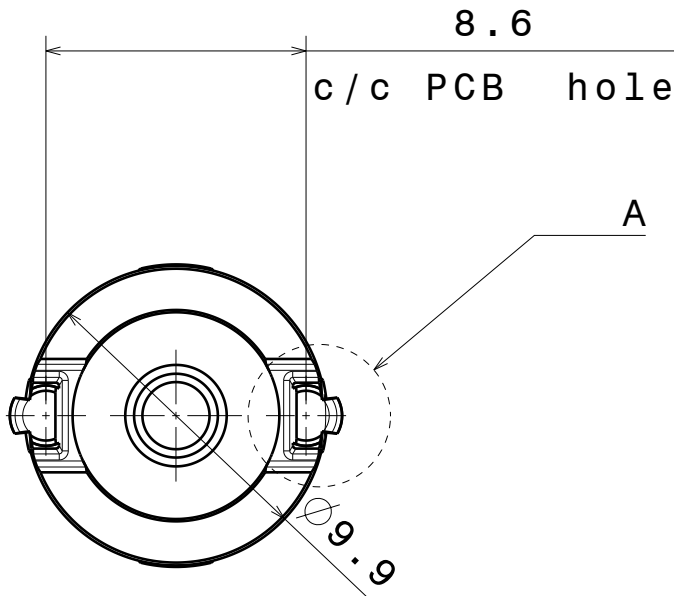
2

1

1



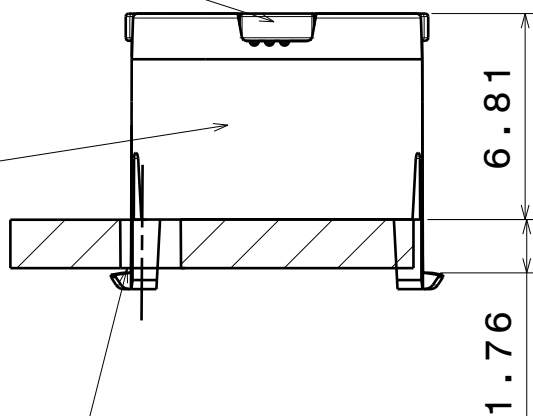
Detail A
Scale: 8:1



Bottom view
Scale: 4:1

Lens

Holder



Front view
Scale: 4:1

Materials:
Lens PMMA
Holder PC

Note:
Take tolerances
into account
when specifying
holes for PCB

This drawing is our property.
It can't be reproduced
or communicated without
our written agreement.



Ledil Oy
Salorankatu 10
FIN-24240 SALO
Finland

DRAWING TITLE

Datasheet Lisa2-clip16-XT series Assy

DRAWN BY

pl

DATE

20.06.2012

CHECKED BY

sn

DATE

20.7.2011

SIZE

A4

DRAWING NUMBER

REV

1

DESIGNED BY

pl

DATE

20.06.2012

SCALE

4:1

WEIGHT (g)

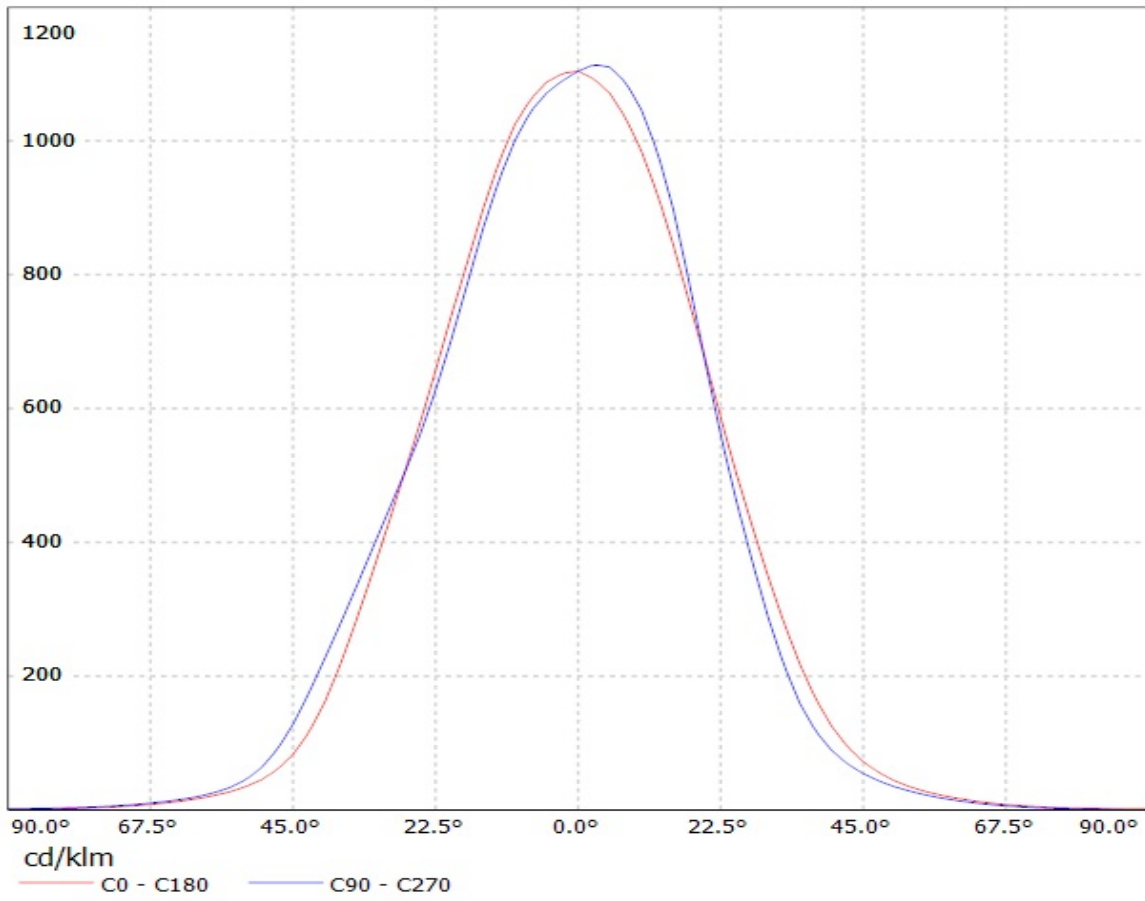
SHEET

1/1

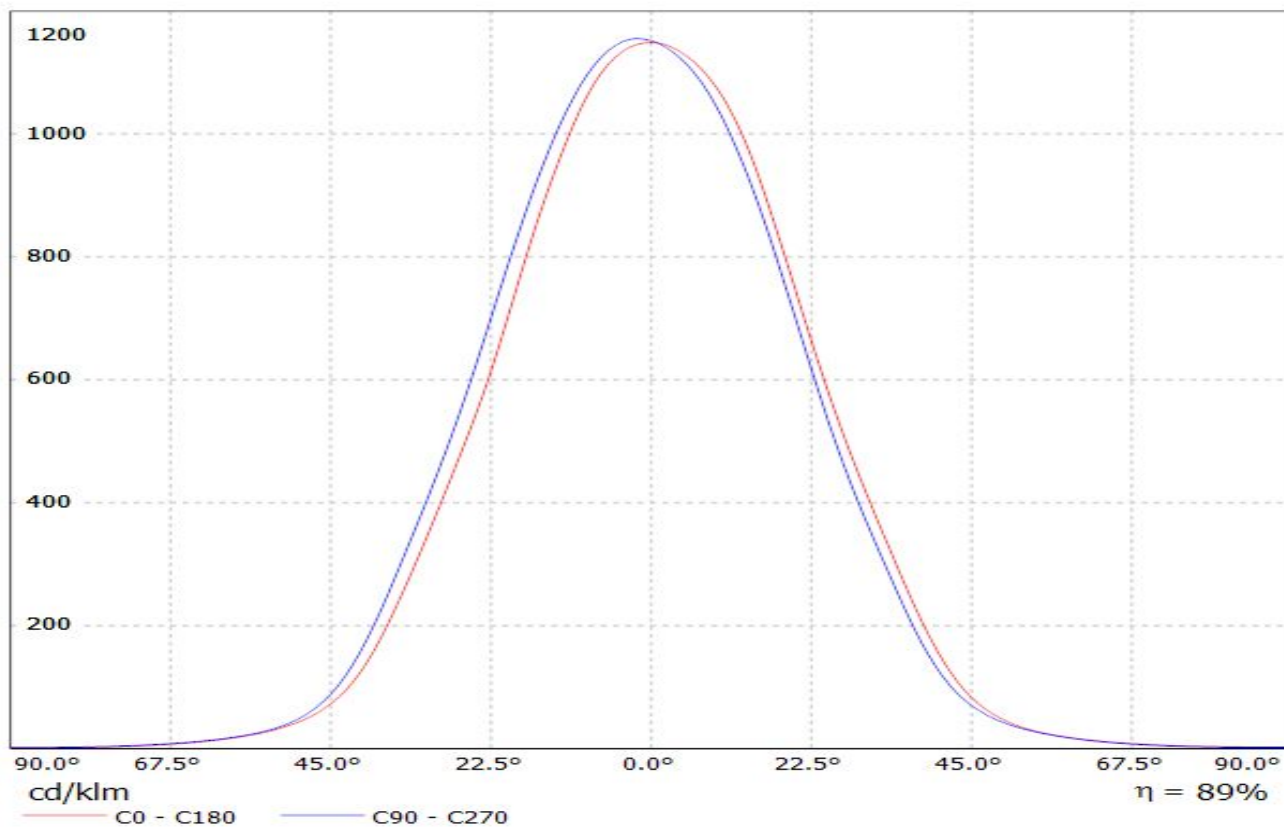
D

A

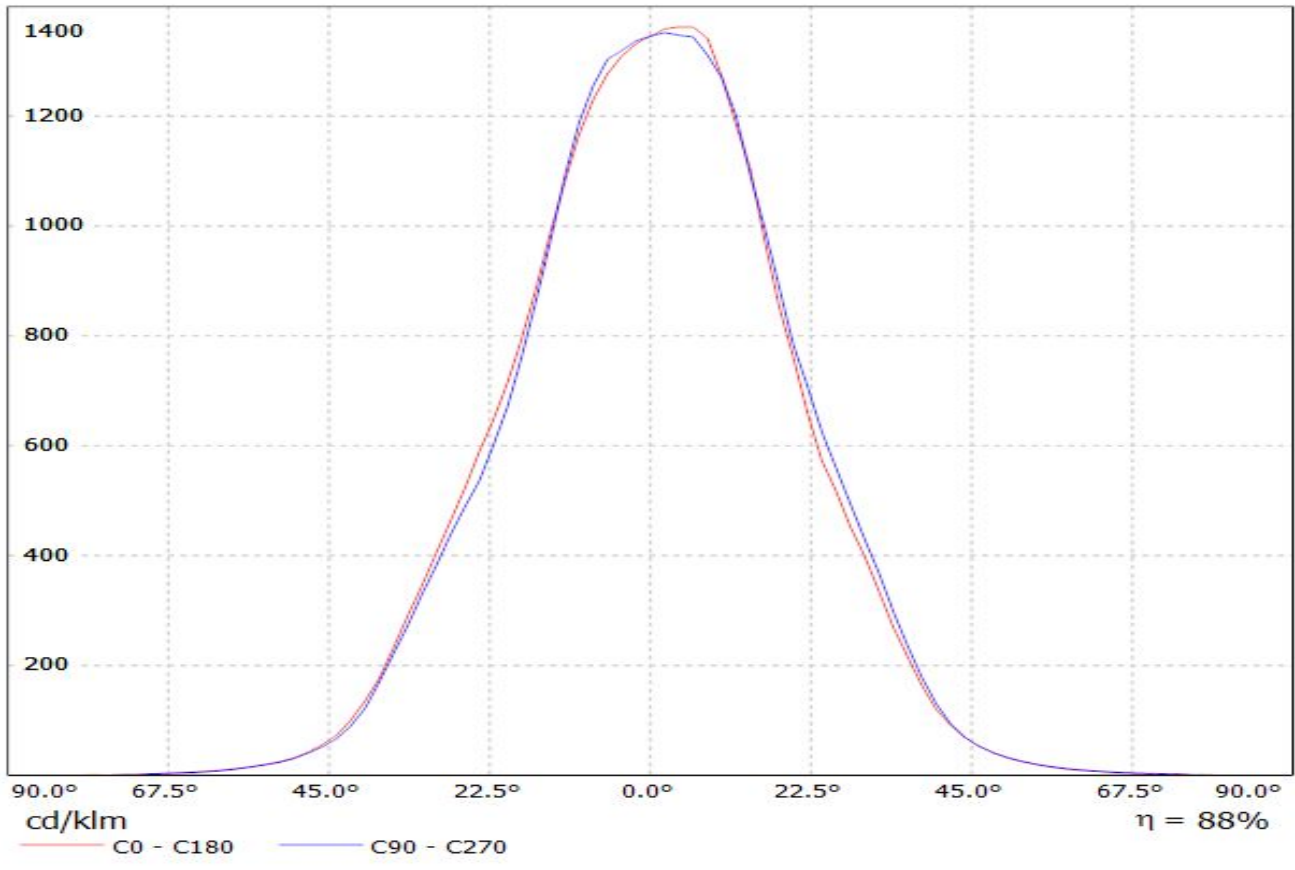
Luminaire: LEDIL OY FP13026_LISA2-WW-PIN & FP13029_LISA2-WW-CLIP-XTE (Cree XT-E 98lm @ 250mA) Efficiency=84%
Lamps: 1 x CREE XT-E (98.9lm)



Luminaire: LEDiL Oy FP13026&FP13029_LISA2-WW_(XP-G2) Eff. 89%
Lamps: 1 x Cree_(XP-G2) 104lm@250mA CCT=6600K P=0.76W I=250mA

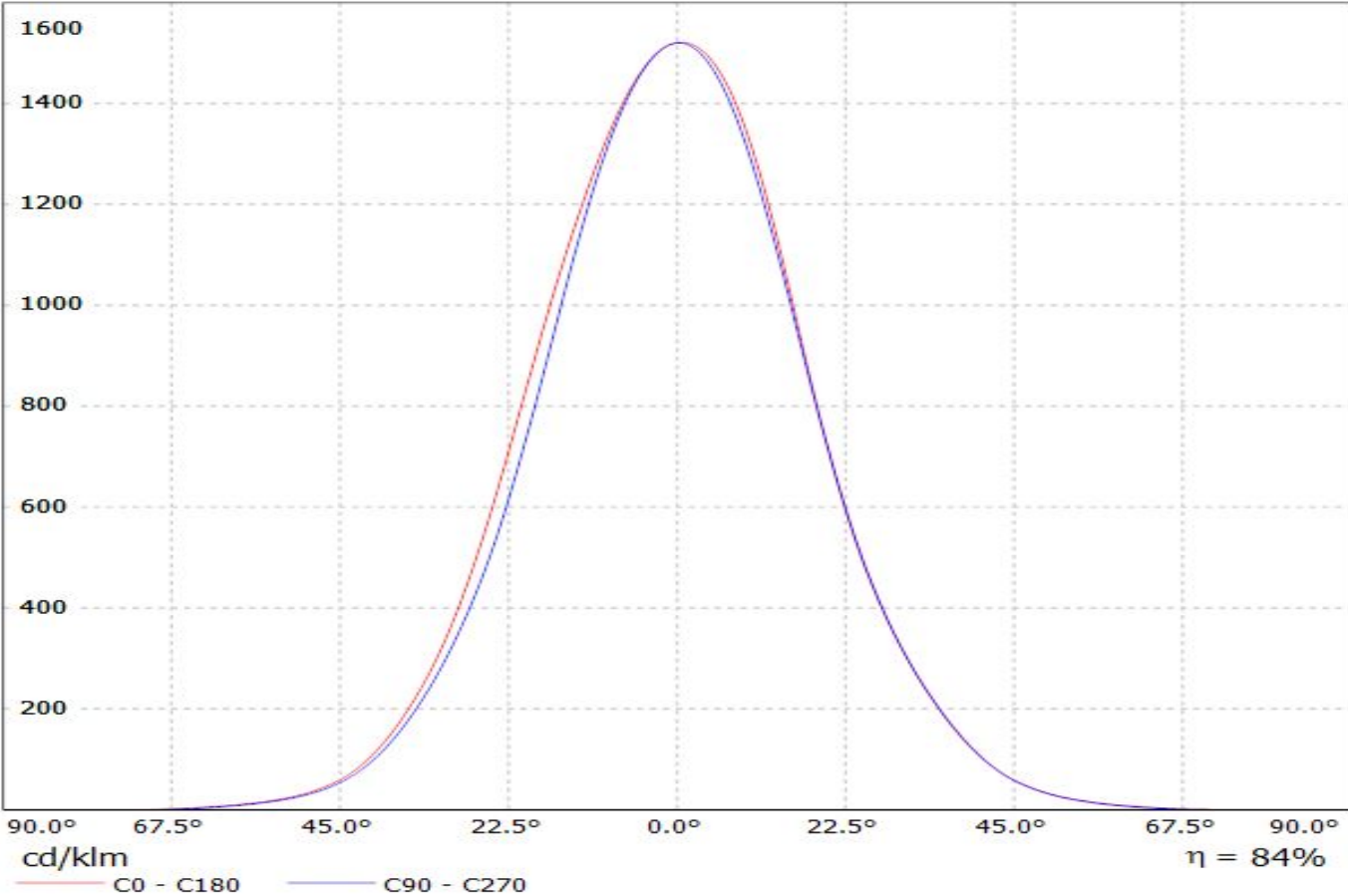


Luminaire: Ledil Oy FP13026&FP13029_LISA2-WW_PIN&CLIP (XP-E2) Eff. 88%
Lamps: 1 x Cree XP-E2 cool white 92lm@250mA CCT=5600K P=0.75W I=250mA

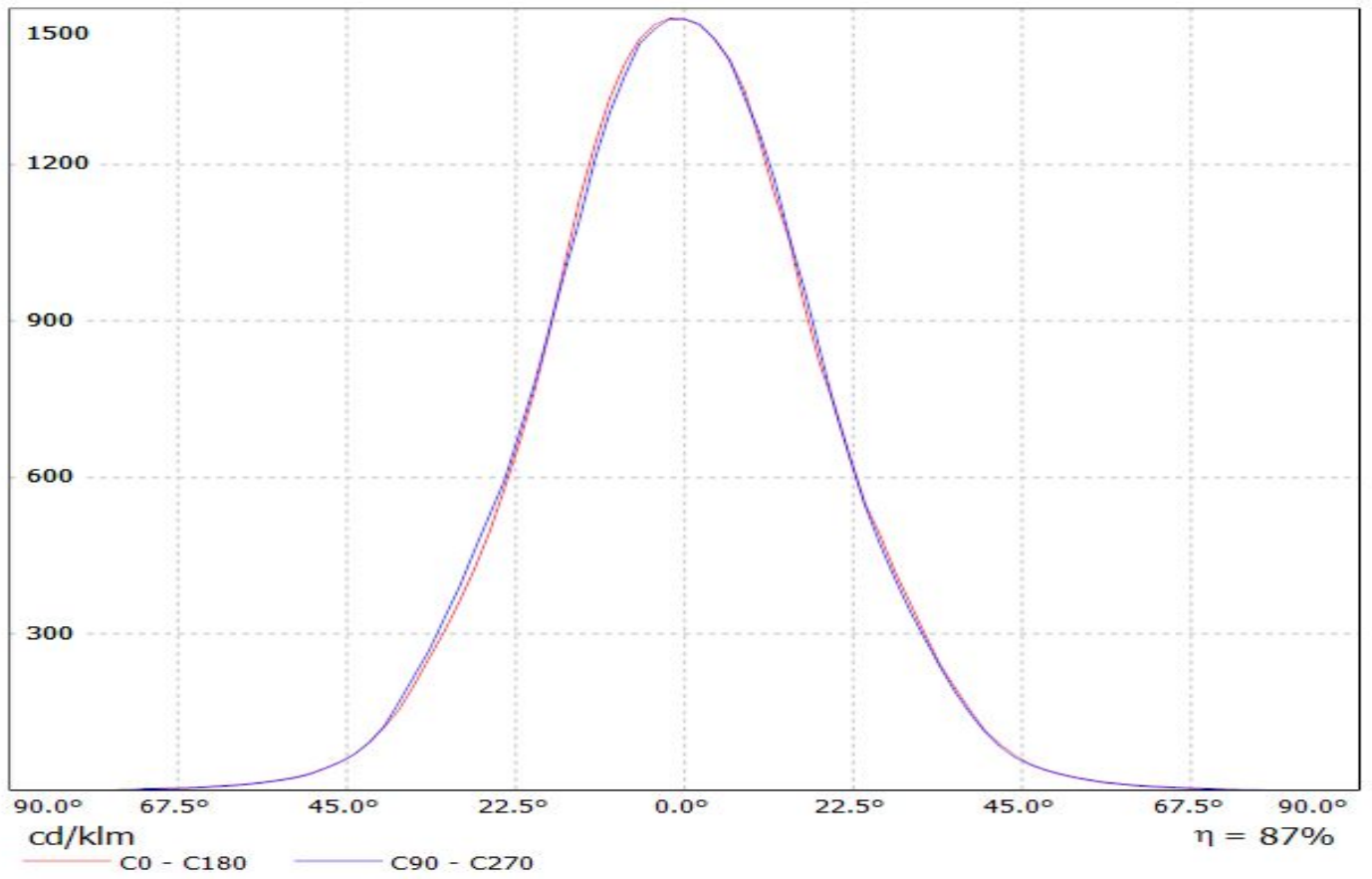


Luminaire: Ledil Oy

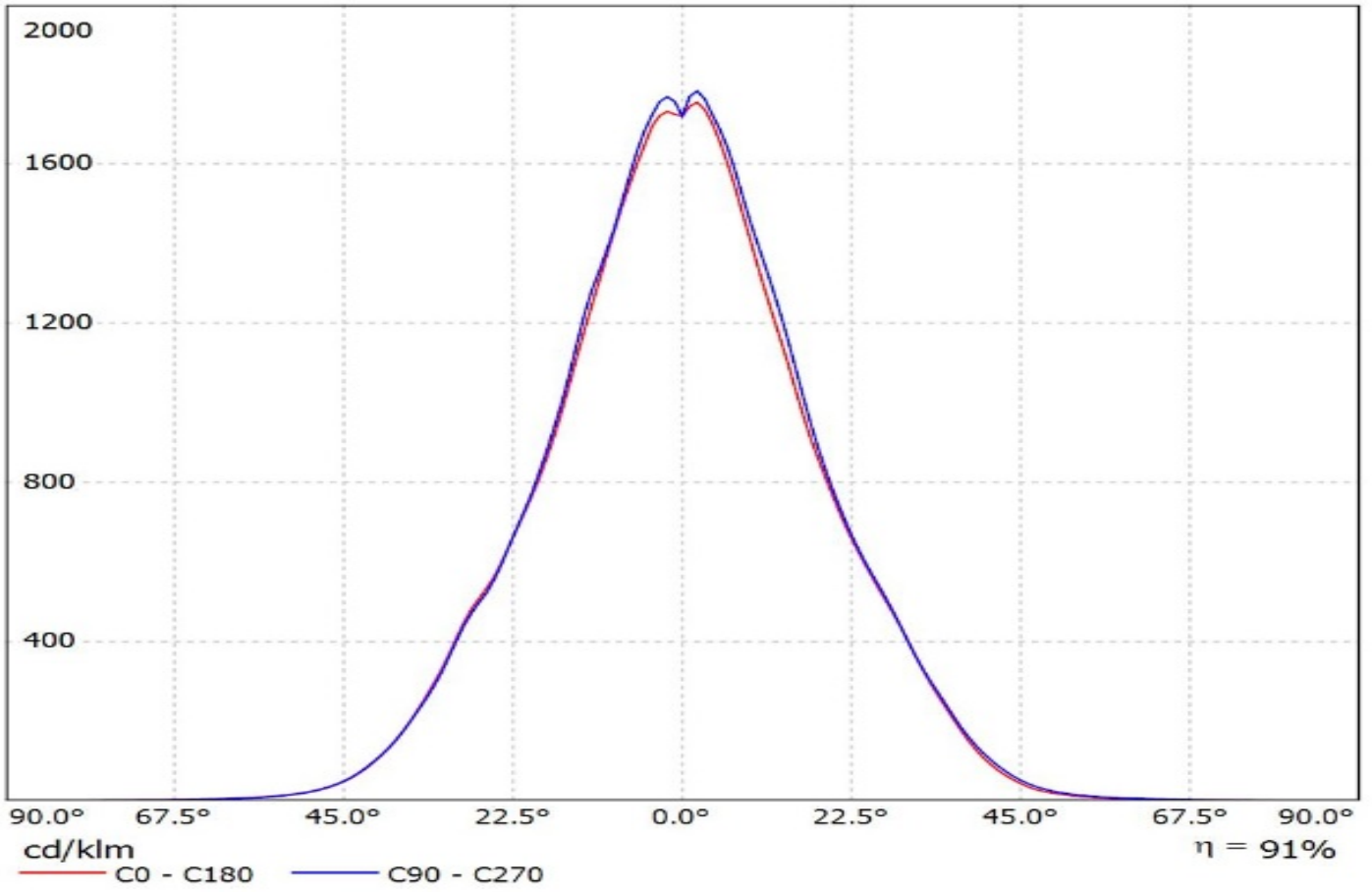
Lamps: 1 x



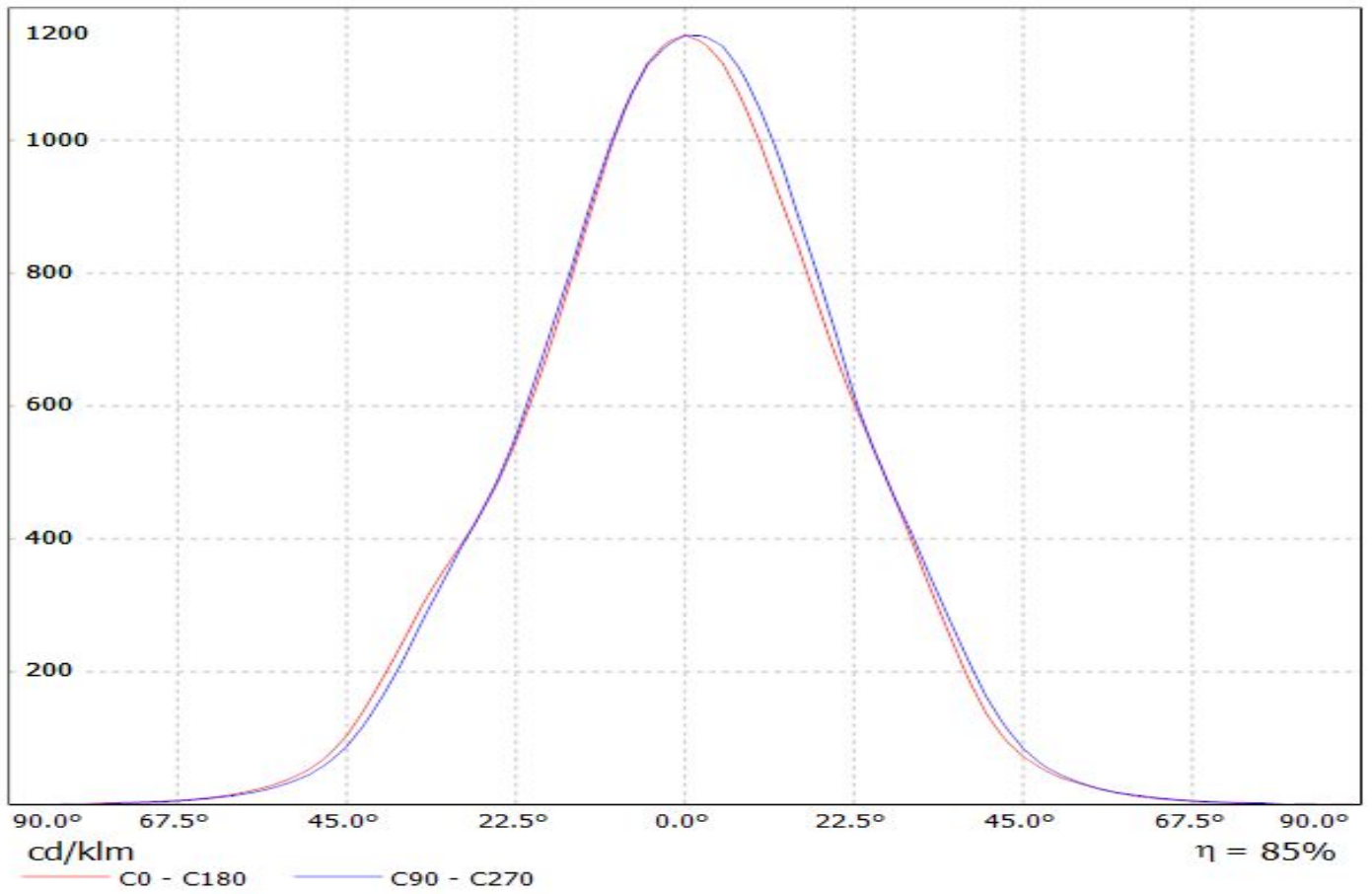
Luminaire: Ledil Oy FP13026&FP13029_LISA2-WW-PIN_(NCSxx19B) Eff. 86%
Lamps: 1 x Nichia NCSxx19B (NCSL119BE) 88lm @ 250mA CCT=3000K P=0.8W I=250mA



Luminaire: Ledil Oy FP13029_LISA2-WW-CLIP_(SFH_4715S)_SIMULATED
Lamps: 1 x Osram SFH 4715S with 550 nm wavelength

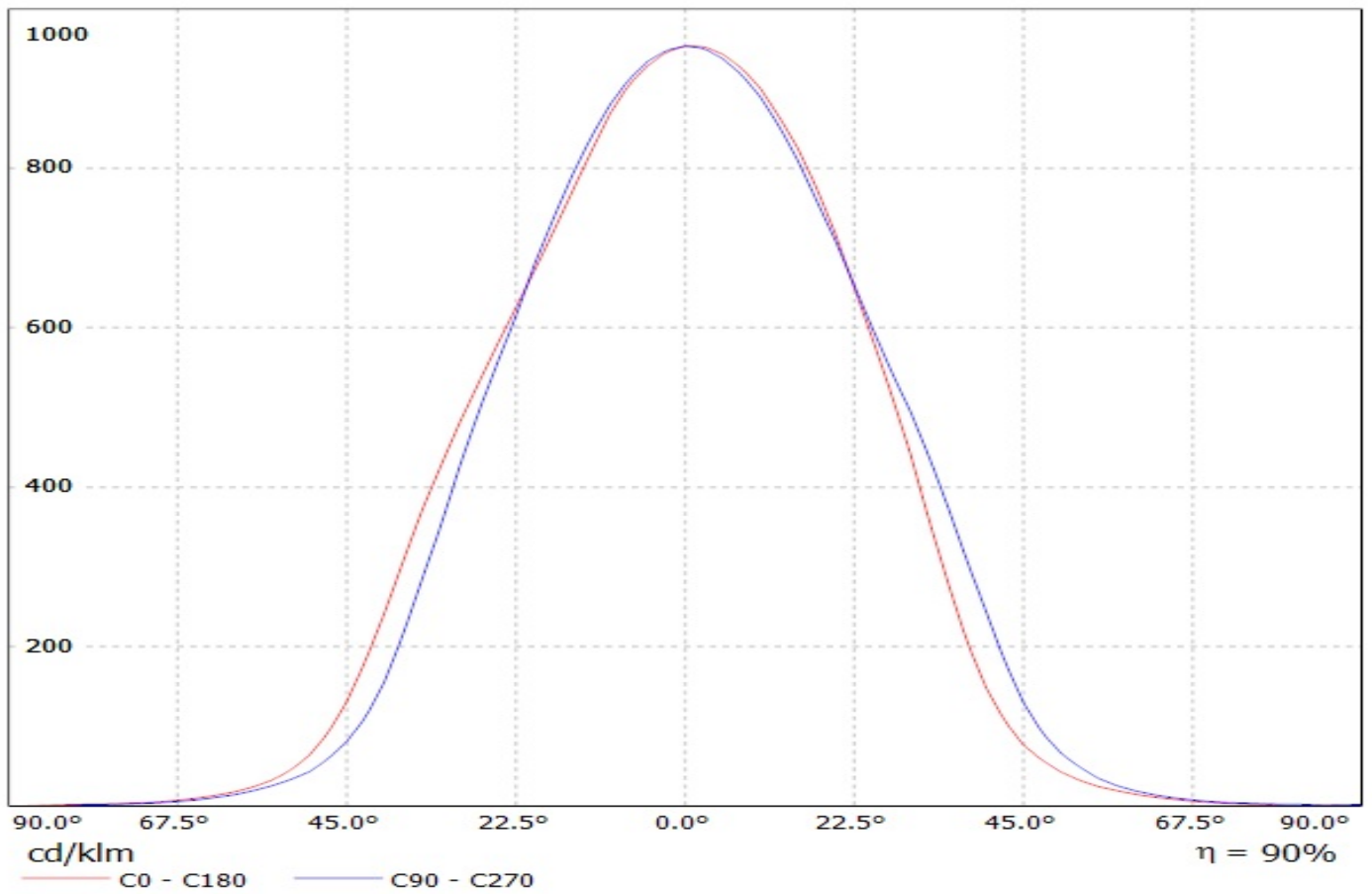


Luminaire: LEDiL Oy
Lamps: 1 x FP13029_LISA2-WW-CLIP_(SQ)

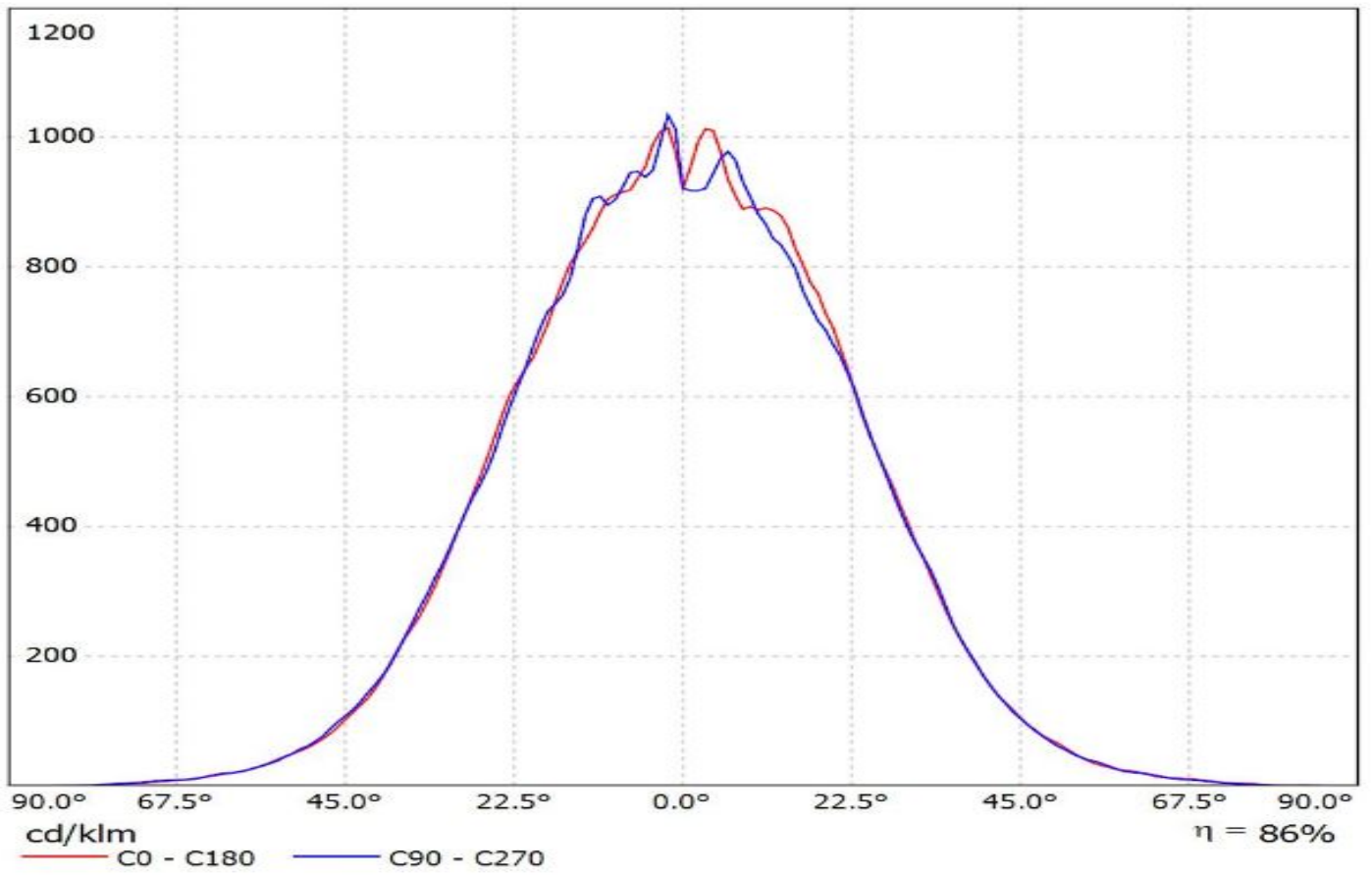


Luminaire: LEDil Oy FP13026_LISA2-WW-PIN_(LH351Z)

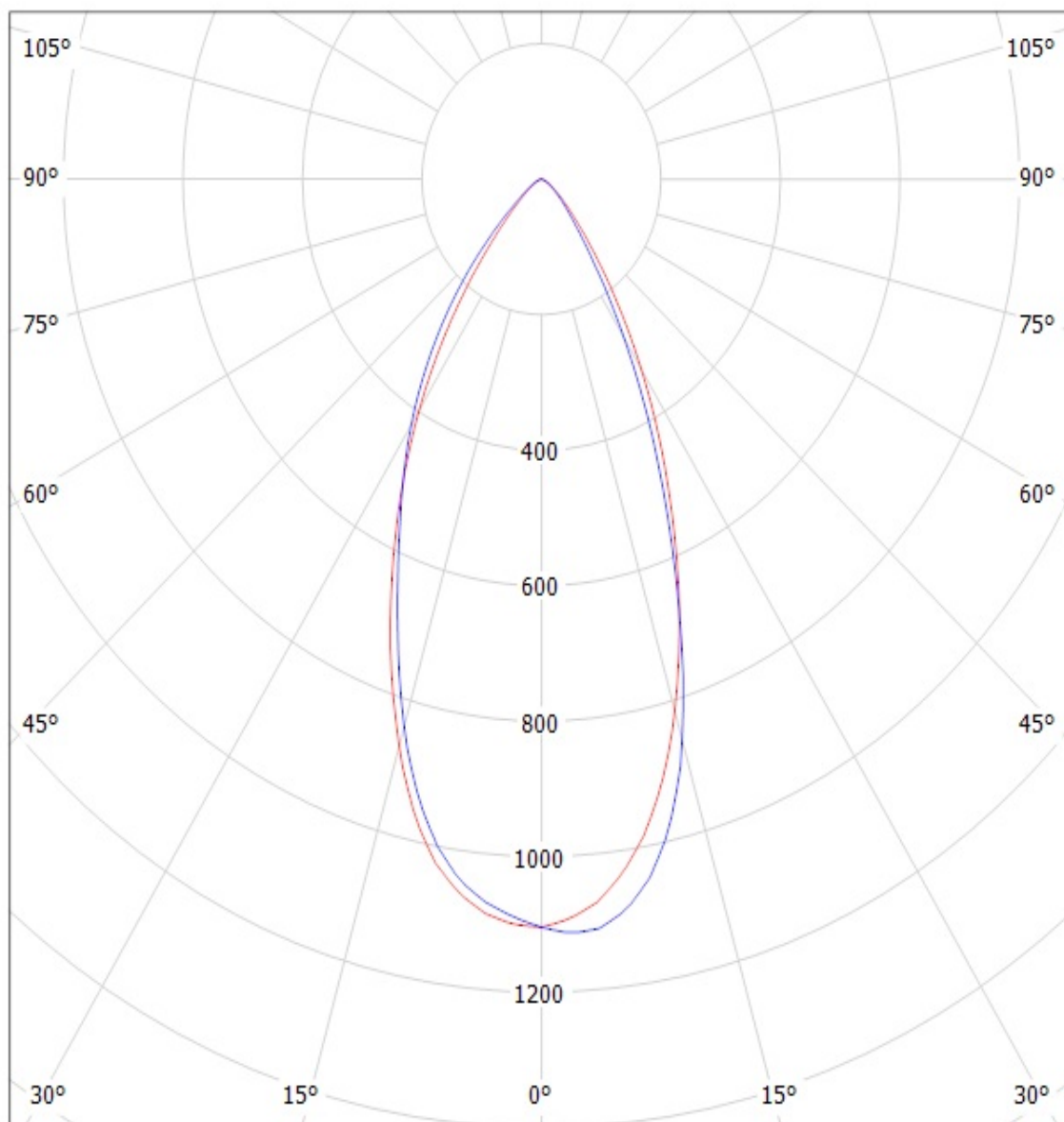
Lamps: 1 x Samsung LH351Z (90.14lm @ 250mA) CCT=6500K P=0.7W I=250mA



Luminaire: Ledil Oy FP13029_LISA2-WW-CLIP_Seoul_Z8Y22P_SIMULATED
Lamps: 1 x Seoul Z8Y22P



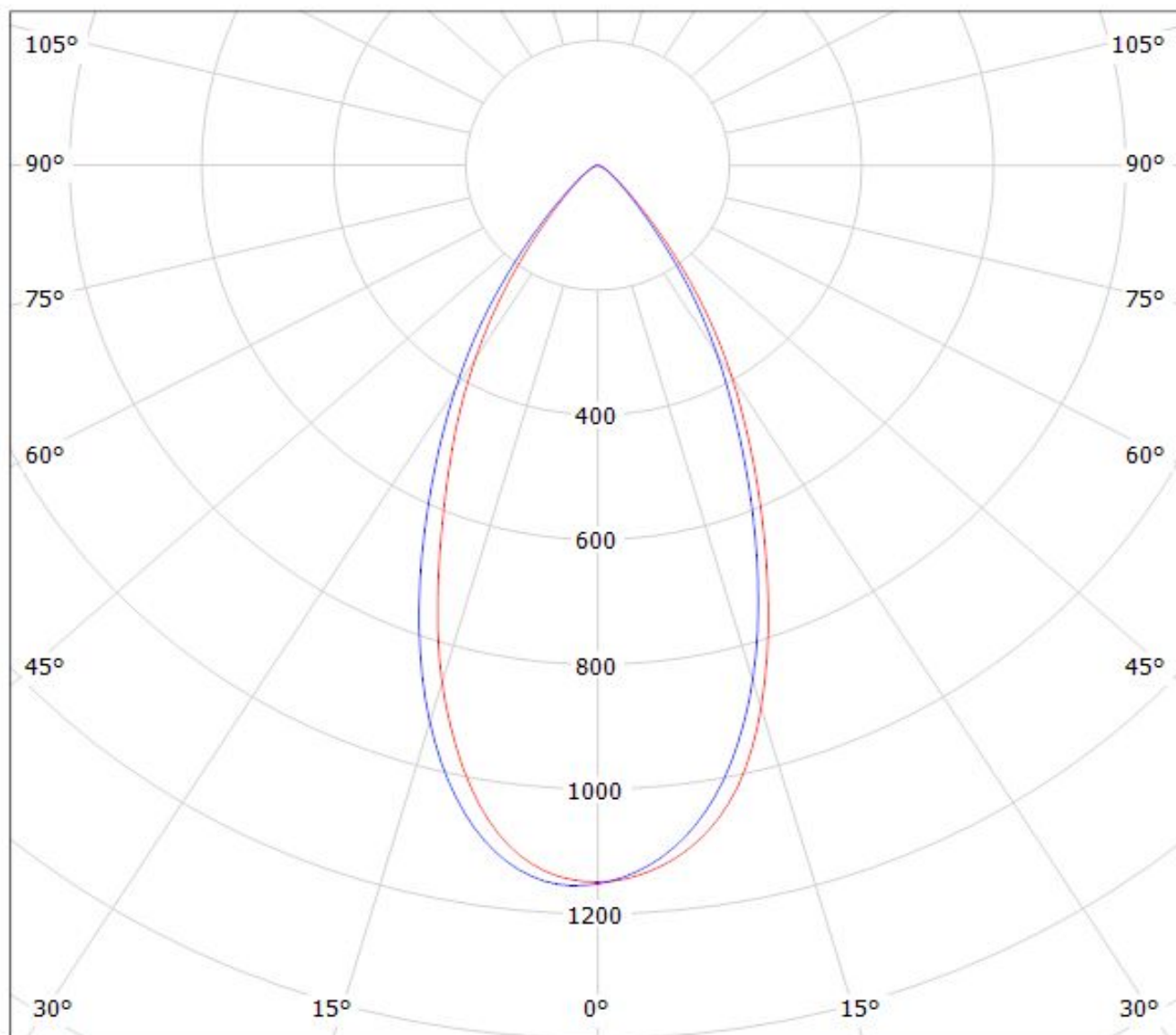
Luminaire: LEDIL OY FP13026_LISA2-WW-PIN & FP13029_LISA2-WW-CLIP-XTE (Cree XT-E 98lm @ 250mA) Efficiency=84%
Lamps: 1 x CREE XT-E (98.9lm)



cd/klm

— C0 - C180 — C90 - C270

Luminaire: LEDiL Oy FP13026&FP13029_LISA2-WW_(XP-G2) Eff. 89%
Lamps: 1 x Cree_(XP-G2) 104lm@250mA CCT=6600K P=0.76W I=250mA

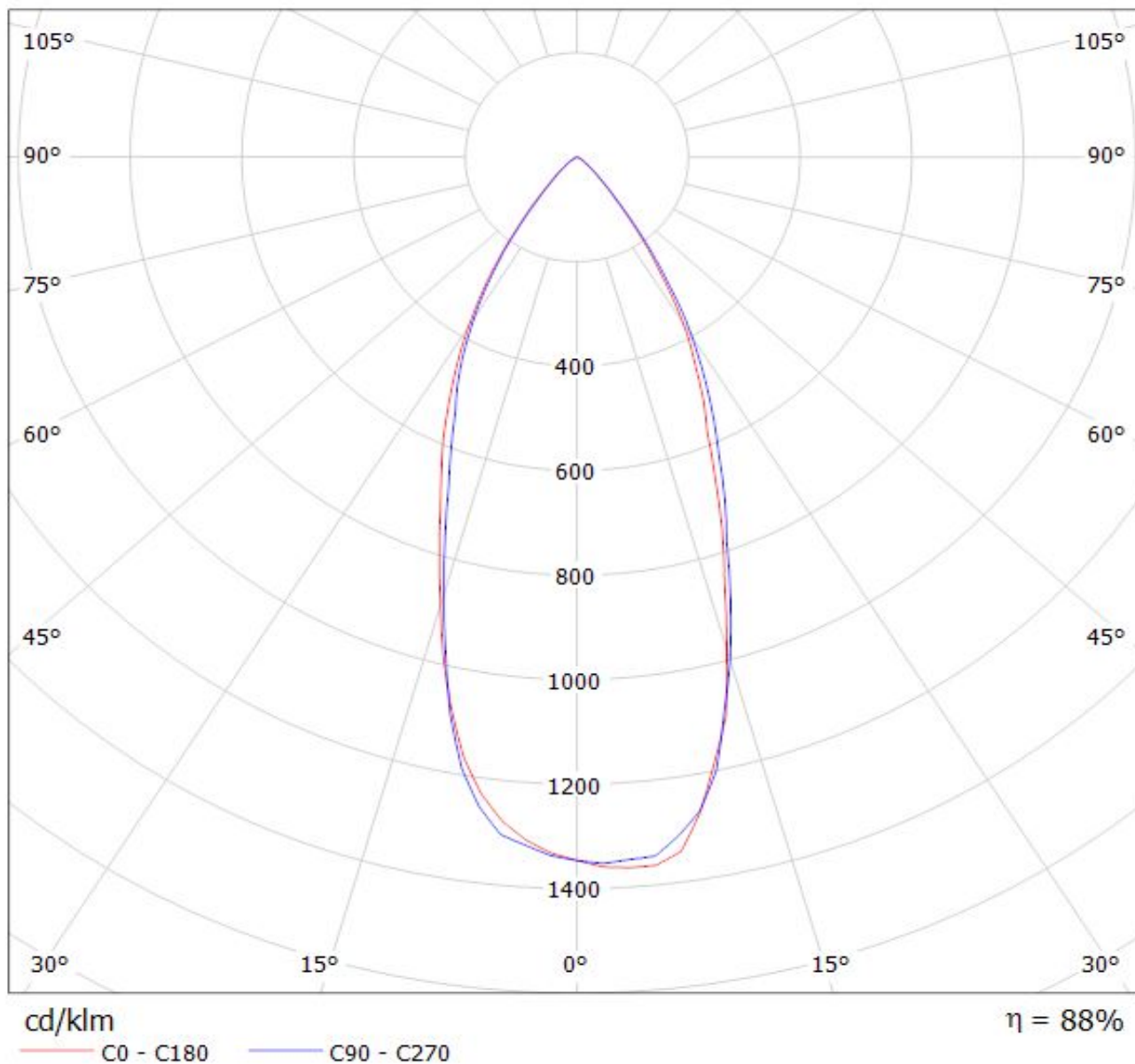


cd/klm

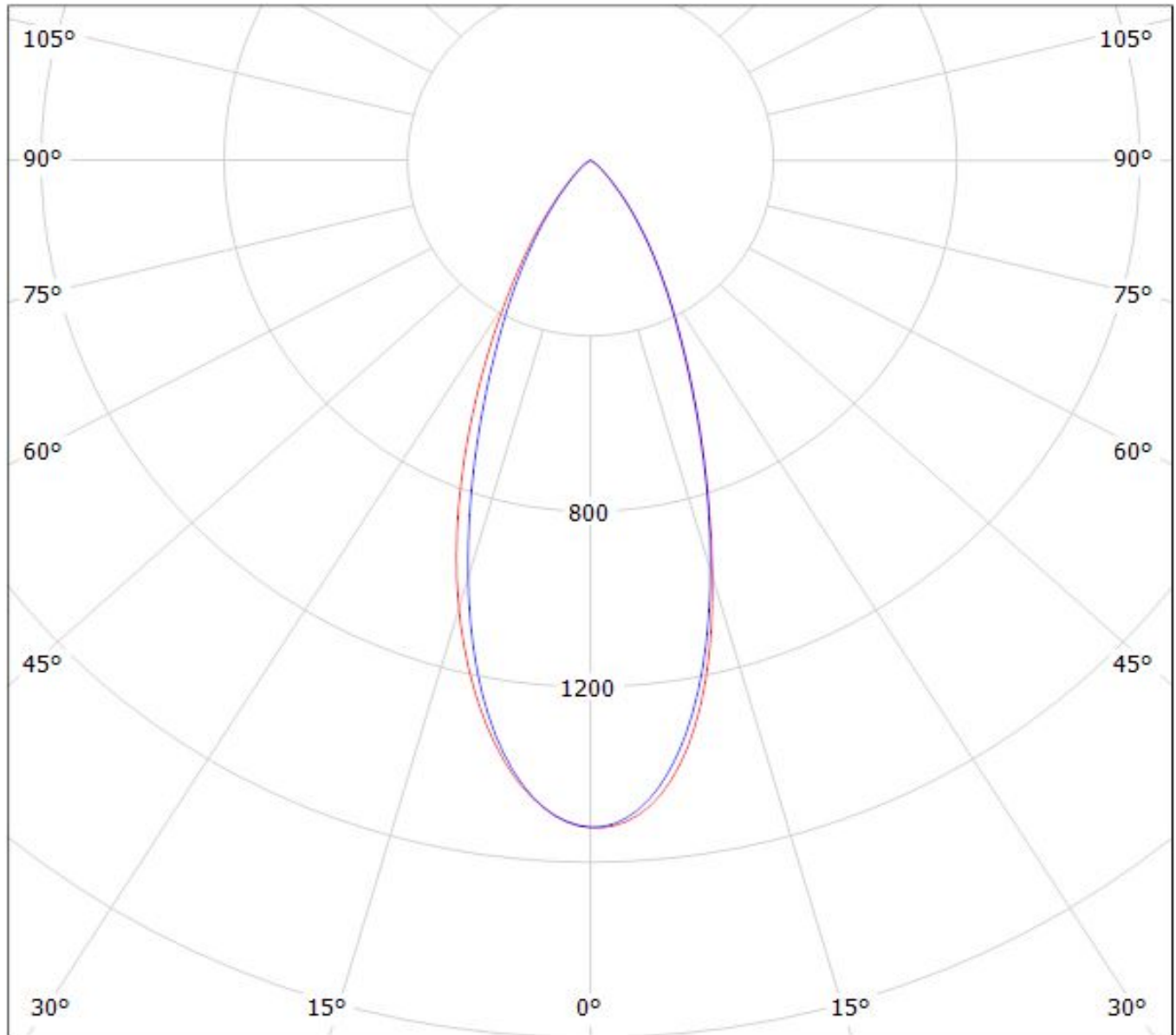
$\eta = 89\%$

— C0 - C180 — C90 - C270

Luminaire: Ledil Oy FP13026&FP13029_LISA2-WW_PIN&CLIP (XP-E2) Eff. 88%
Lamps: 1 x Cree XP-E2 cool white 92lm@250mA CCT=5600K P=0.75W I=250mA



Luminaire: Ledil Oy
Lamps: 1 x

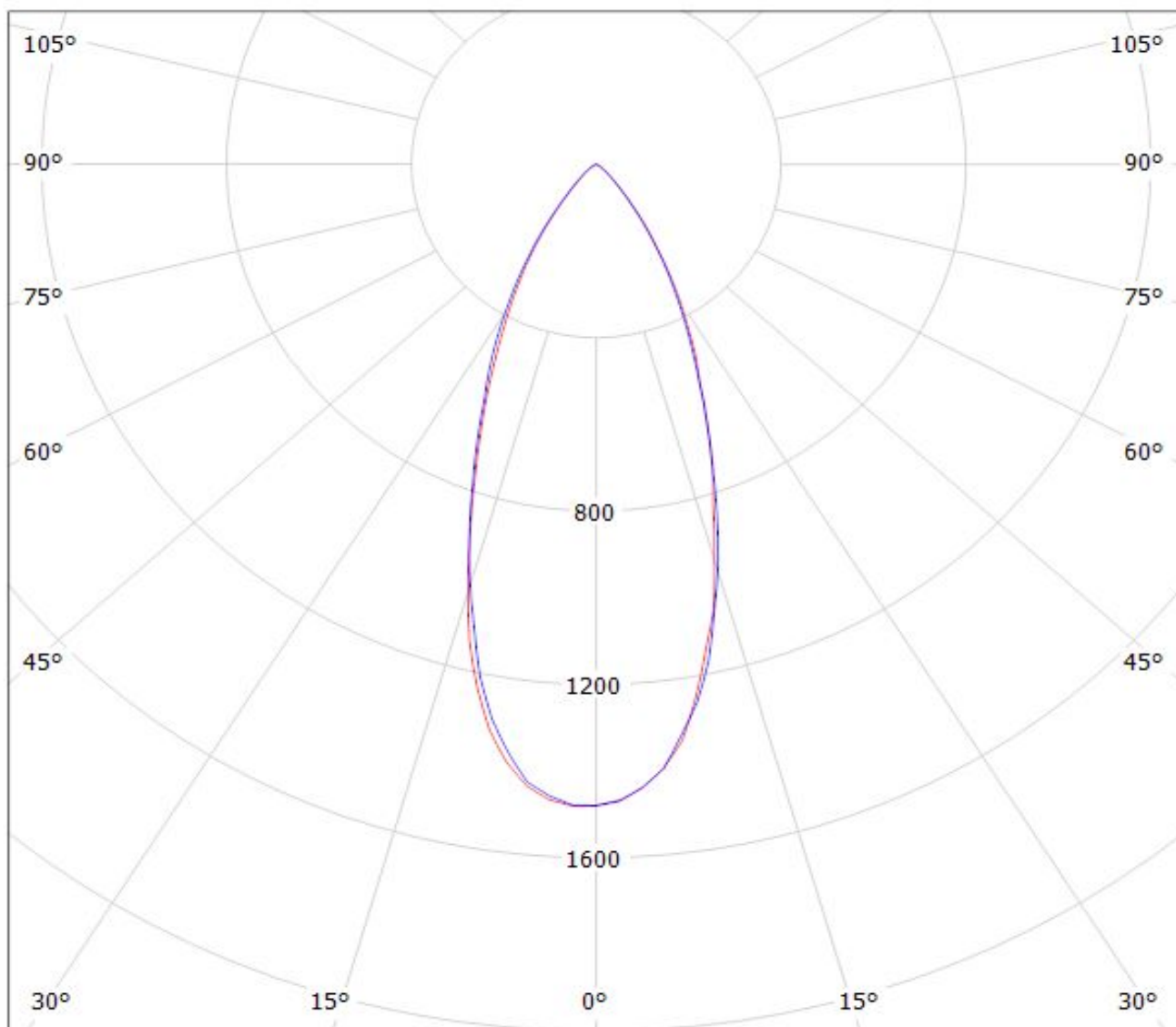


cd/klm

— C0 - C180 — C90 - C270

$\eta = 84\%$

Luminaire: Ledil Oy FP13026&FP13029_LISA2-WW-PIN_(NCSxx19B) Eff. 86%
Lamps: 1 x Nichia NCSxx19B (NCSL119BE) 88lm @ 250mA CCT=3000K P=0.8W I=250mA



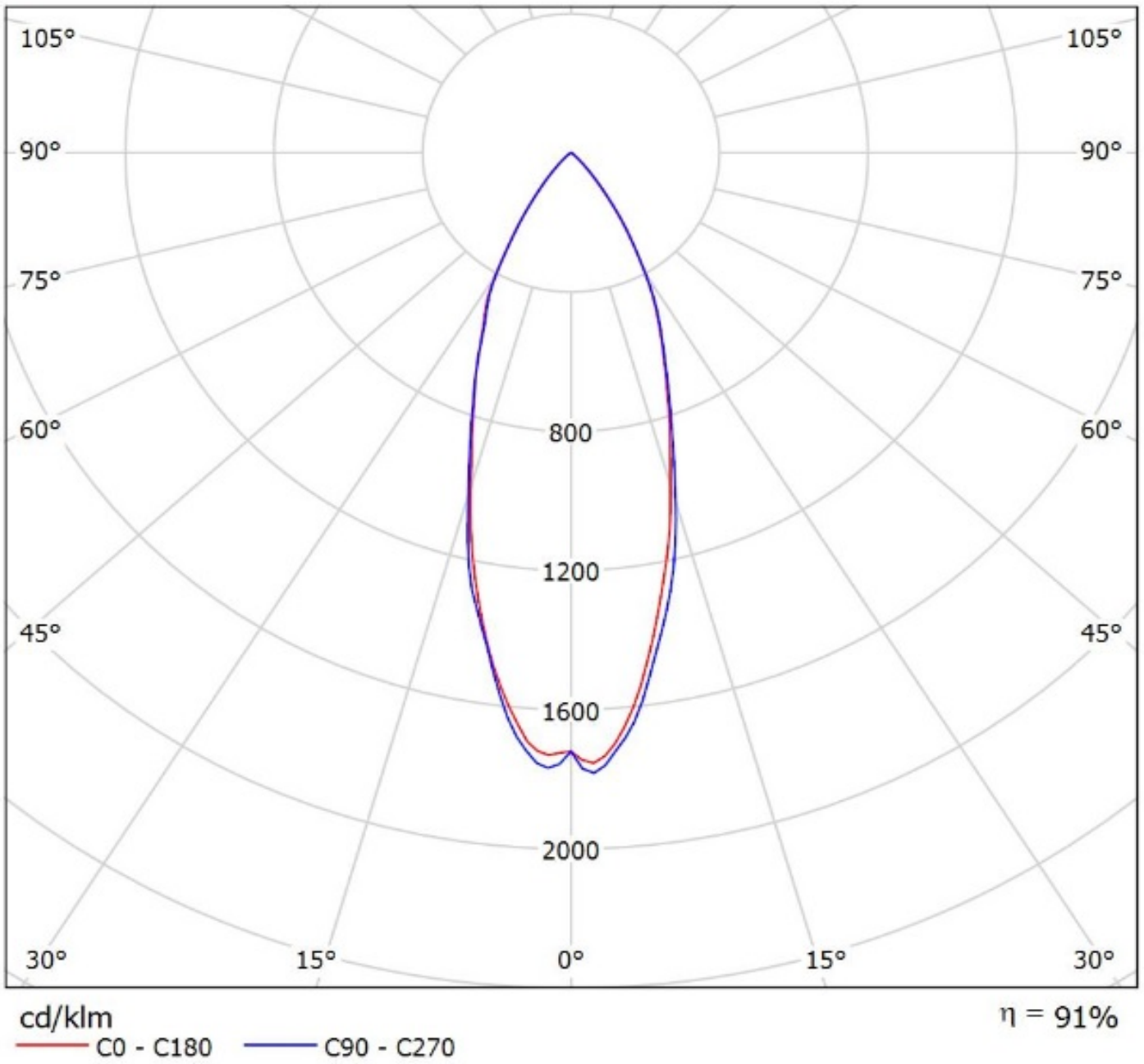
cd/klm

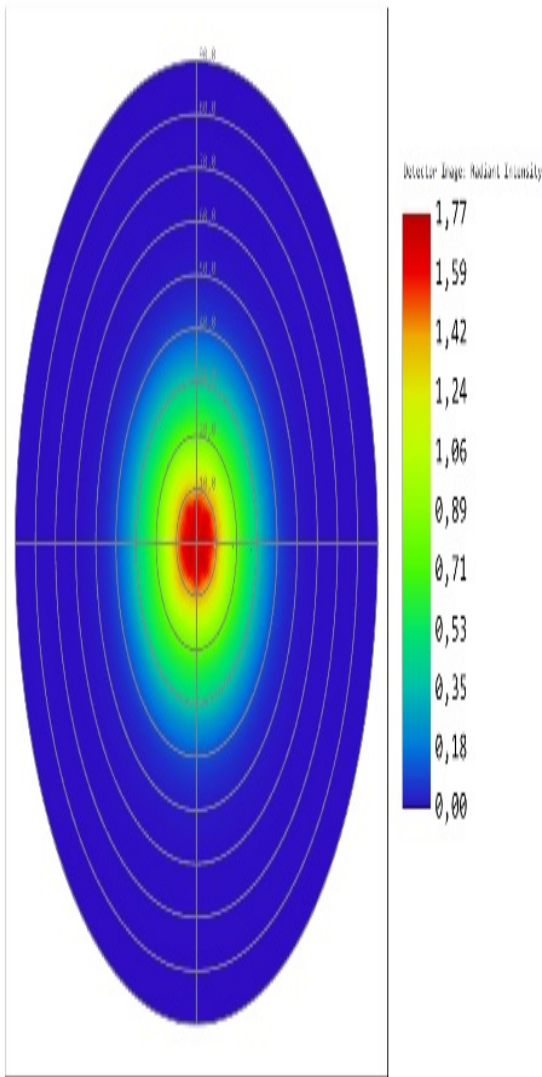
— C0 - C180

— C90 - C270

$\eta = 87\%$

Luminaire: Ledil Oy FP13029_LISA2-WW-CLIP_(SFH_4715S)_SIMULATED
Lamps: 1 x Osram SFH 4715S with 550 nm wavelength



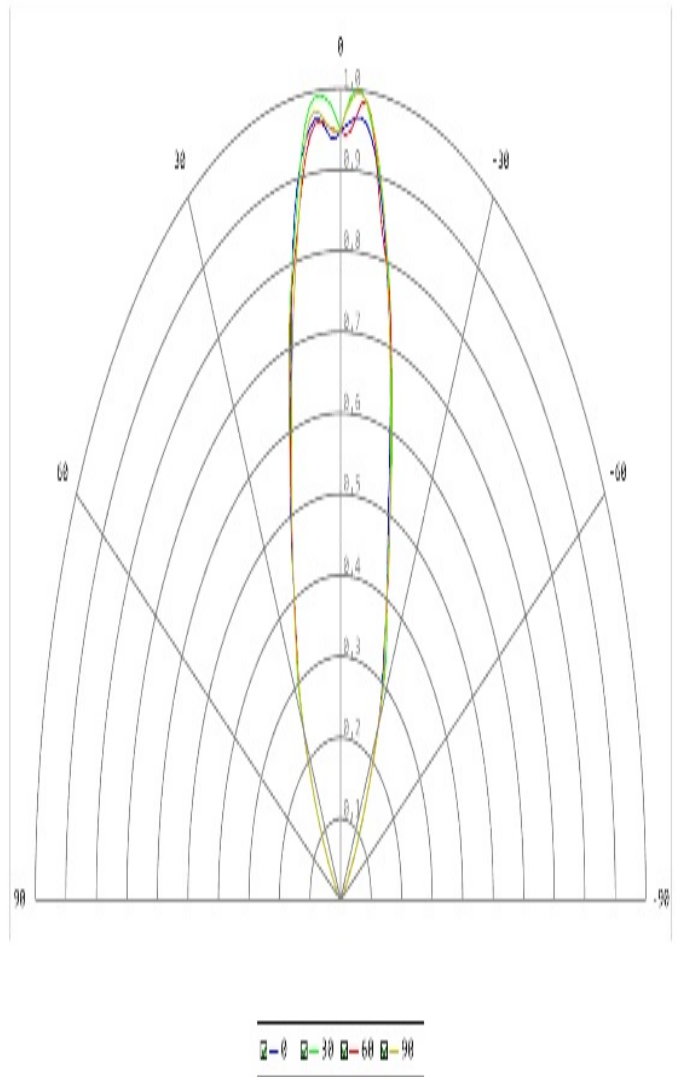


Detector Image: Radiant Intensity

27.4.2016
Detector 8, NSCG Surface 1:
Max polar angle: 90,00 deg, Total Hits = 436738
Peak Intensity : 1,771E+000 Watts/Steradian
Total Power : 9,300E-001 Watts

Zemax
Zemax OpticStudio 15.5 SP2

FP13029_LISA2-WW-CLIP (SPH 47255) SIMULATED.zmx
Configuration 1 of 1



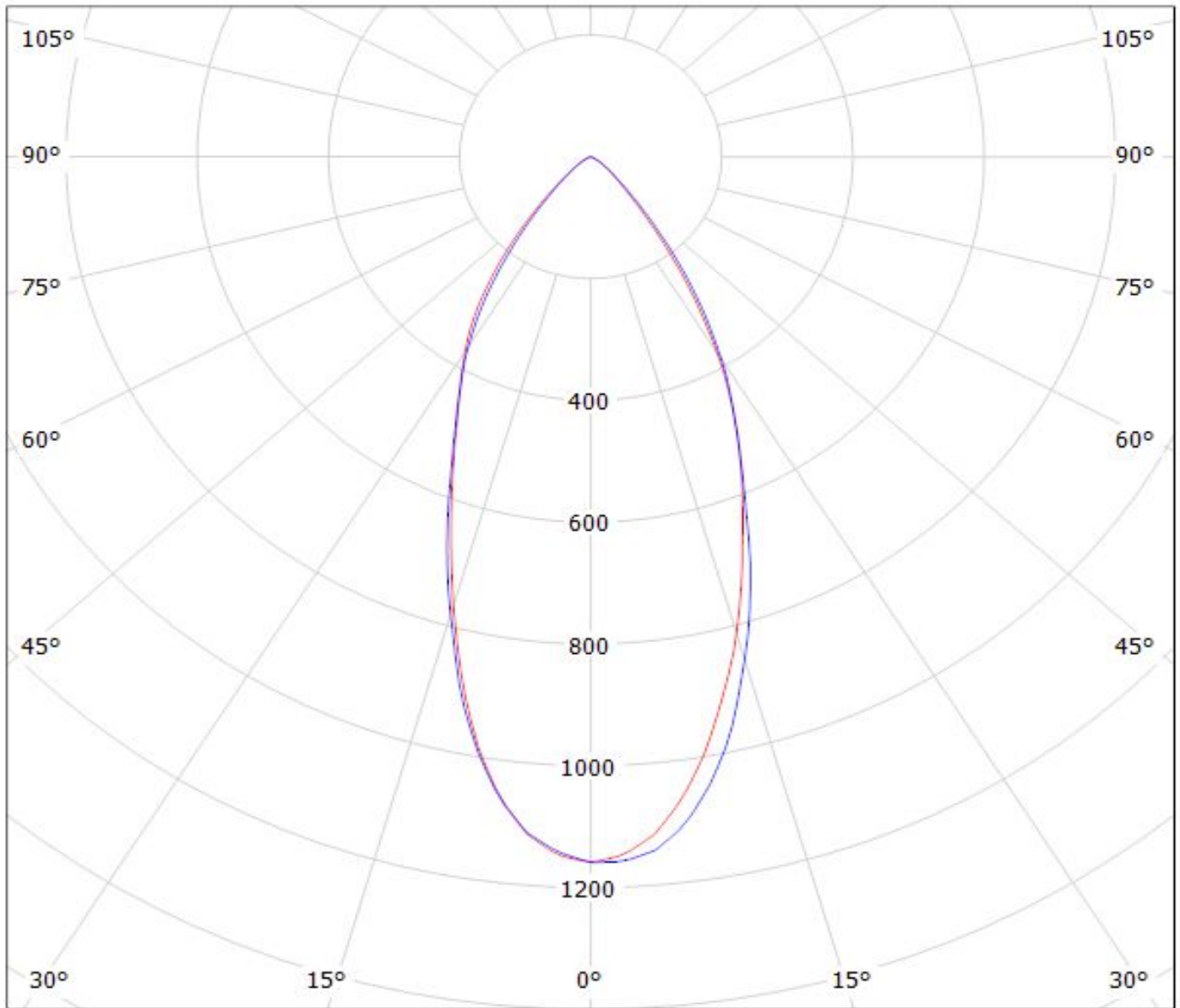
Detector Image: Radiant Intensity

27.4.2016
Detector 8, NSCG Surface 1:
Scan Angles: 0, 30, 60, 90
Peak Intensity : 1,697E+000 Watts/Steradian

Zemax
Zemax OpticStudio 15.5 SP2

FP13029_LISA2-WW-CLIP (SPH 47255) SIMULATED.zmx
Configuration 1 of 1

Luminaire: LEDiL Oy
Lamps: 1 x FP13029_LISA2-WW-CLIP_(SQ)

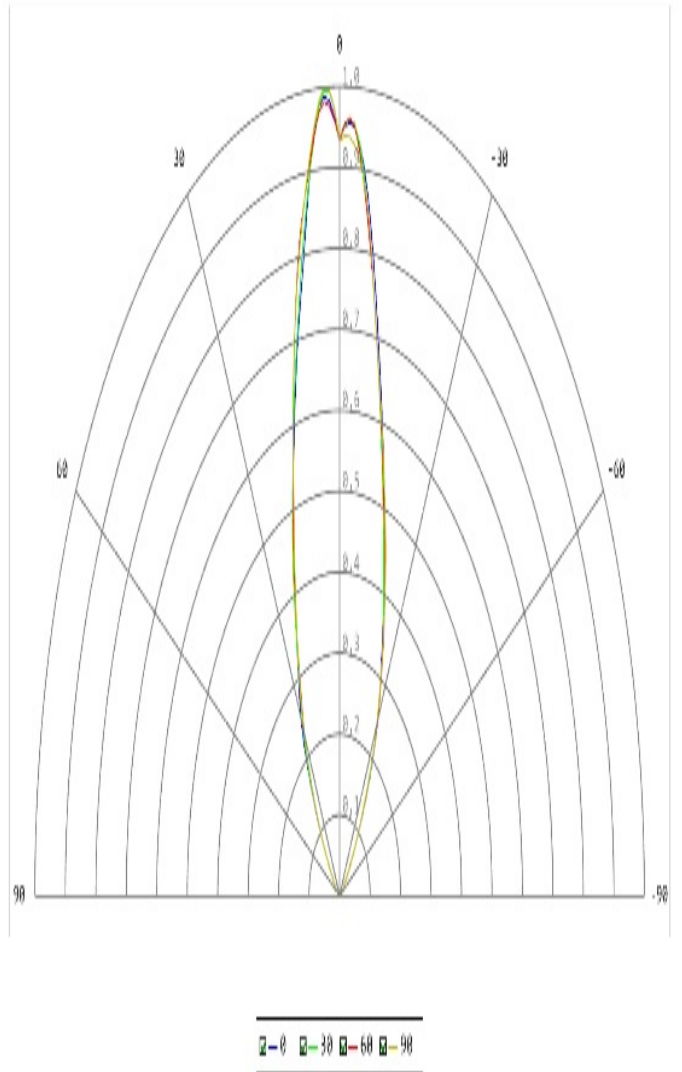
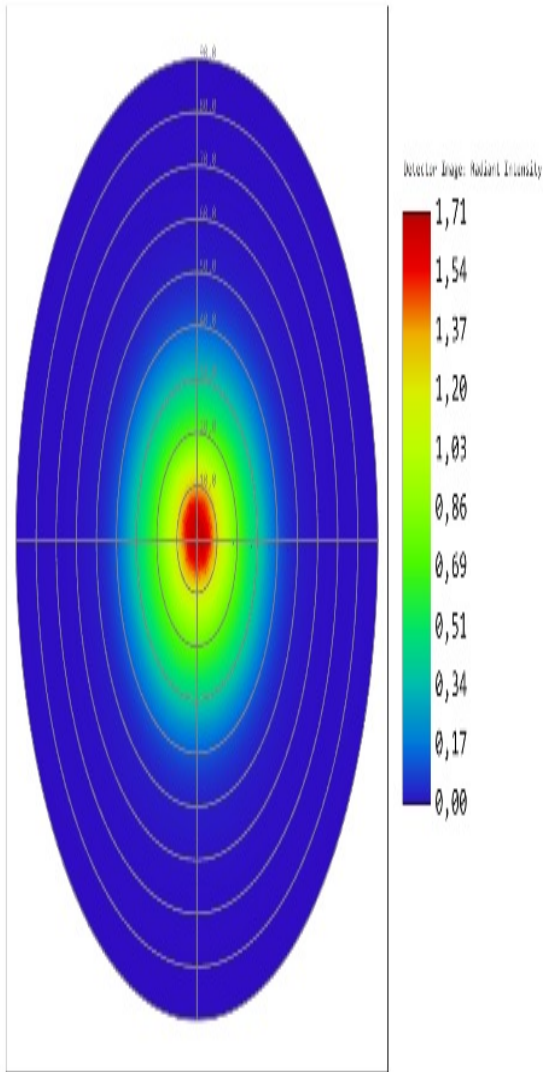


cd/klm

— C0 - C180

— C90 - C270

$\eta = 85\%$



Detector Image: Radiant Intensity

27.4.2016
 Detector 8, NSCG Surface 1:
 Max polar angle: 90,00 deg, Total Hits = 910197
 Peak Intensity : 1,713E+000 Watts/Steradian
 Total Power : 9,087E-001 Watts

Zemax
 Zemax OpticStudio 15.5 SP2

FP13020_LISA2-NW-CLIP (SPH 47785)_SIMULATED.zmx
 Configuration 1 of 1

Detector Image: Radiant Intensity

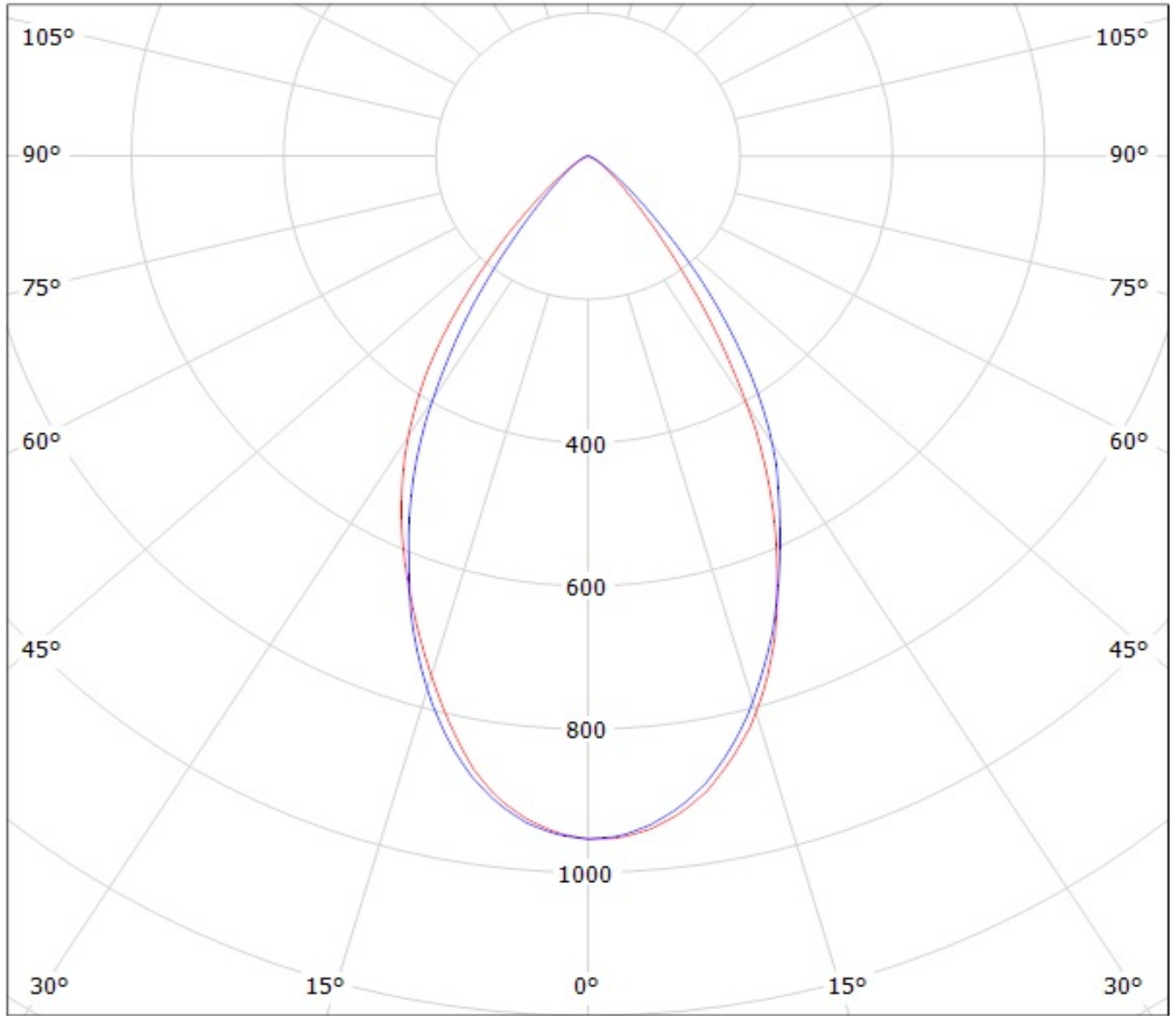
27.4.2016
 Detector 8, NSCG Surface 1:
 Scan Angles: 0, 30, 60, 90
 Peak Intensity : 1,713E+000 Watts/Steradian

Zemax
 Zemax OpticStudio 15.5 SP2

FP13020_LISA2-NW-CLIP (SPH 47785)_SIMULATED.zmx
 Configuration 1 of 1

Luminaire: LEDil Oy FP13026_LISA2-WW-PIN_(LH351Z)

Lamps: 1 x Samsung LH351Z (90.14lm @ 250mA) CCT=6500K P=0.7W I=250mA



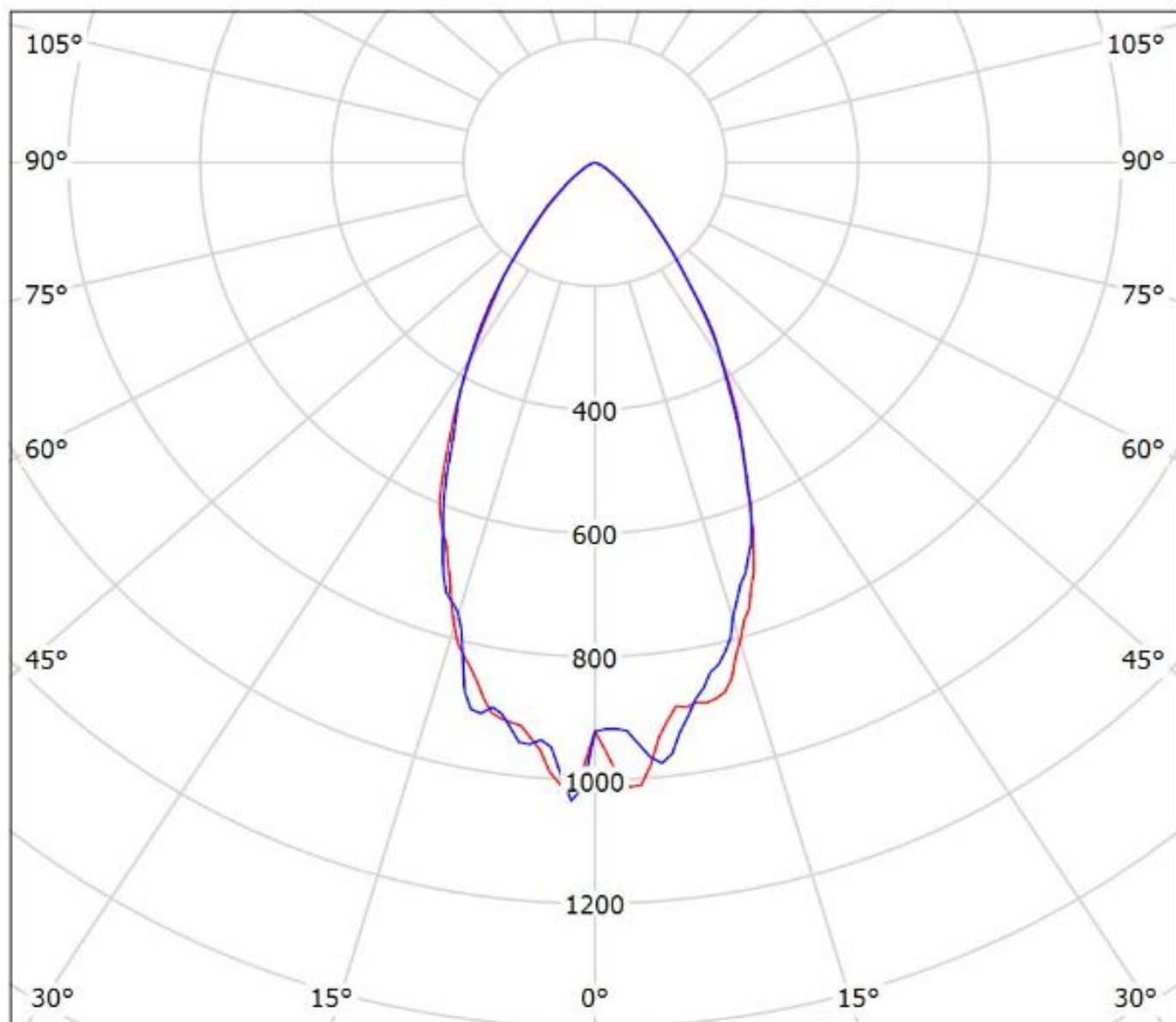
cd/klm

η = 90%

— C0 - C180

— C90 - C270

Luminaire: Ledil Oy FP13029_LISA2-WW-CLIP_Seoul_Z8Y22P_SIMULATED
Lamps: 1 x Seoul Z8Y22P



cd/klm

— C0 - C180 — C90 - C270

$\eta = 86\%$

NOTE: The typical divergence will be changed by different color, chip size and chip position tolerance. The typical total divergence is the full angle measured where the luminous intensity is half of the peak value.