

5

4

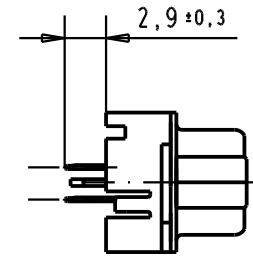
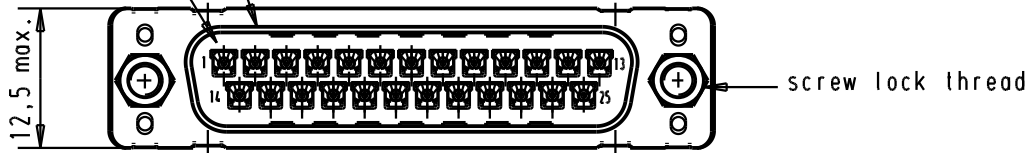
3

2

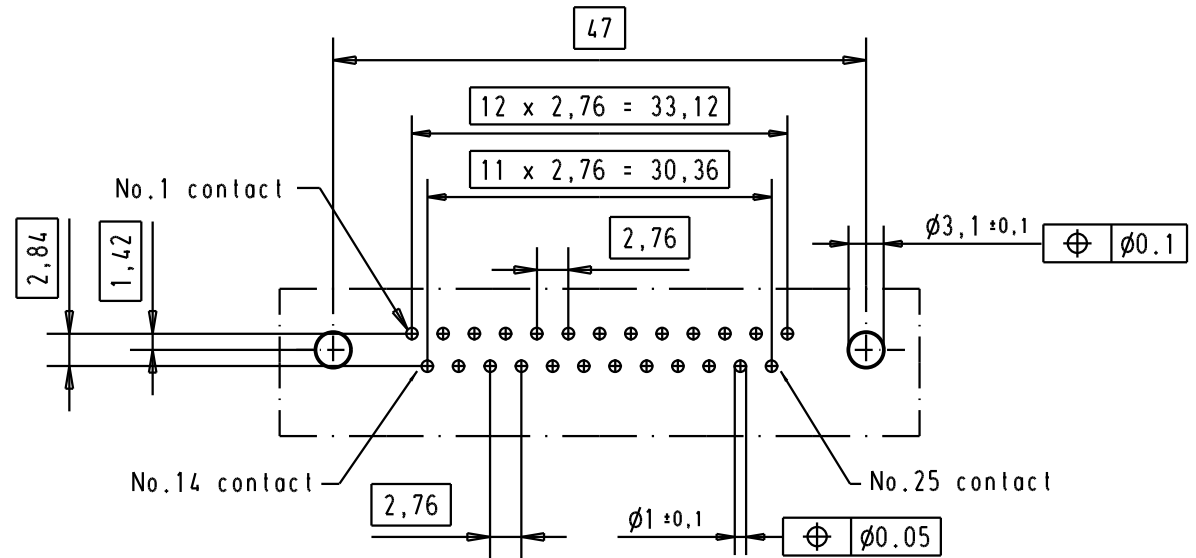
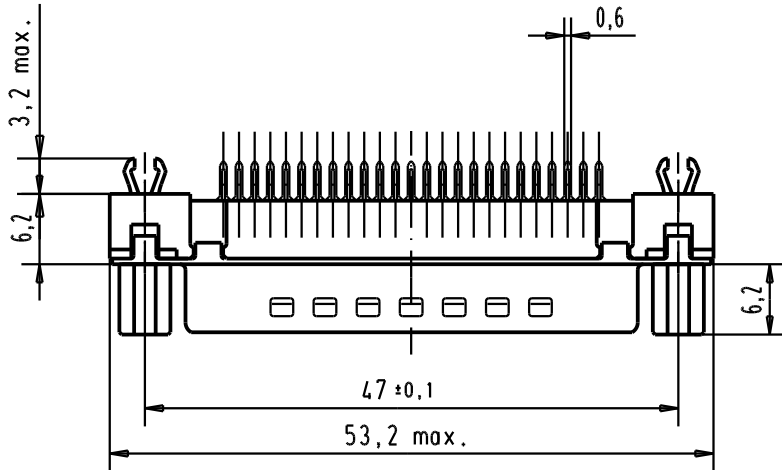
1

Mating face according to : MIL-C-24308 / DIN 41652 / CECC 75301-802

No.1 contact



Printed board layout component side



Connector retention and insertion forces on the PCB = 25 / 80 Newtons.

09 65 369 3733	M3	1								<p>All Dim. in mm Orig. Size DIN A 4</p>	<p>D-Sub, High temperature, 25 poles, male, straight with solder pins 2.9, screw lock and grounding board lock.</p>	<p>Moßstab/ Scale 1.5:1</p>
09 65 369 6733	M3	2										
09 65 369 7733	M3	3										
09 65 369 3713	4-40 UNC	1										
09 65 369 6713	4-40 UNC	2	31892	22/04/04	JH							
09 65 369 7713	4-40 UNC	3	31084	04/09/02	YT							
Part number	Screw lock thread	Performance level	Mod.	Dat.	Name	<p>HARTING EURL F-95972 Paris</p>			<p>TB 09 65 369 x7x3</p>		<p>Blatt/ Page 1</p>	
									<p>Sub.</p>			