

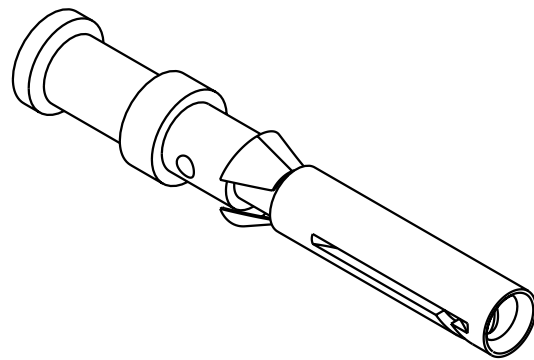
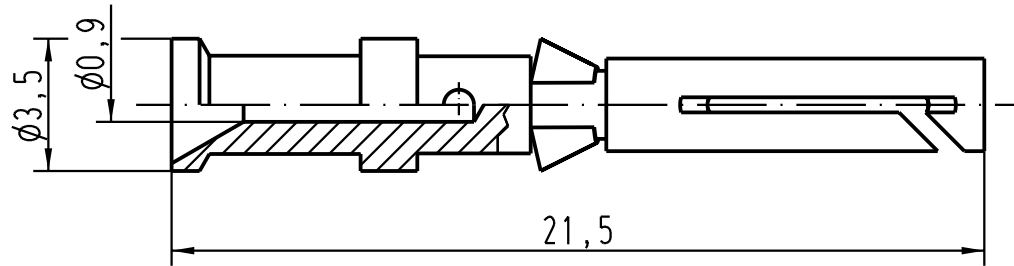
1 2 3 4 5 6

A


B

C

D



Leiterquerschnitt/ wire gauge: 0,14-0,37mm² / AWG 26-22
 Oberfläche/ surface: Gold Tec (NiP+Au)

 All Dimensions in mm Original Size DIN A 4		Techn. Character.			Nicht tolerierte Masse/ Free size tolerances		
			Dat.	Name	Massstab/ Scale 5:1	Kontaktbuchse-c crimp contact	
			Detail.	14.05.04 Loe.			
			Insp.	KR			
			Stand.				
411022			HARTING Electric GmbH & Co. KG D-32339 Espelkamp			TB 09 15 000 6404	Blatt/ page /
Mod.	Dat.	Name	